

# Mars Tryon 4\* - Long (ID: 22013) - 4 Star Long

www.CourseWalkApp.com

Distance: 5700 m  
Speed: 570 m/min  
Optimum Time: 10:00  
Time Limit: 20:00



- 1 Mars Starter
- 2 Cleghorn Shooting Stand
- 3 White Oak Table
- 4 Aquaduct
- 5AB FEI Stabling Water
- 6ABC FEI Stabling Boxes
- 7AB Bridgett's Squirrels
- 8 Bird Feeder Gate
- 9AB Beech Tree
- 10 Moonshine Pipe
- 11 Double Brushes
- 12 Tryon Oxer
- 13AB Ethel M Samplers
- 14 Buckeye Nutrition Mill Pond
- 15ABC Buckeye Nutrition Combination
- 16 Buckeye Nutrition Mill Race
- 17 Buckeye Nutrition Wall
- 18 The Bee
- 19ABCDE Mars Sustainability Bay
- 20ABC Mars Equestrian at Chimney Rock
- 21AB The Marina
- 22 Sunburst Table
- 23AB Trakehner to Brushed Corner
- 24 Florida Stable
- 25 The Cardinal Stick Pile
- 26 Cedar Box
- 27 Tryon Table
- 28 Legends Cabin



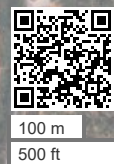
# Mars Tryon 3\* - Long (ID: 22015) - 3 Star Long

www.CourseWalkApp.com

Distance: 4750 m  
Speed: 550 m/min  
Optimum Time: 8:39  
Time Limit: 17:18



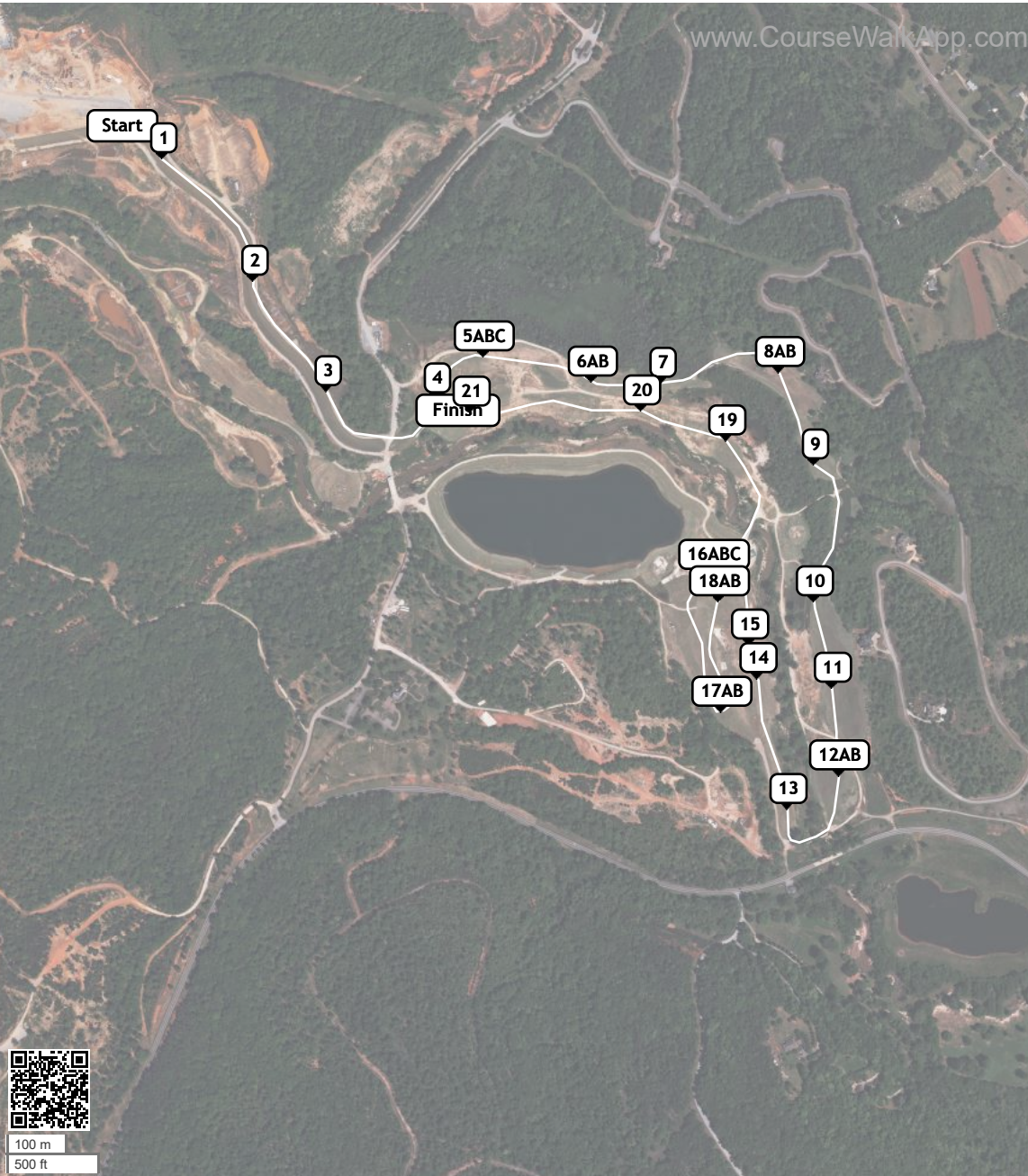
- 1 Mars Starter
- 2 Cleghorn Shooting Stand
- 3 White Oak Table
- 4 Aquaduct
- 5AB FEI Stabling Water
- 6AB FEI Stabling Boxes
- 7AB Offset Brushes
- 8 Bird Feeder Gate
- 9 Rustic Table
- 10 Moonshine Pipe
- 11 Double Brush
- 12 Tryon Oxer
- 13AB Ethel M Samplers
- 14 Buckeye Nutrition Wagon
- 15 The Bee Hive
- 16 The Table
- 17ABC Mars Sustainability Bay
- 18ABC Mars Equestrian at Chimney Rock
- 19 The Marina
- 20 Sunburst Table
- 21AB Wedged Corner
- 22AB FEI Stables
- 23 The Cardinal Stick Pile
- 24 Cedar Box
- 25 Tryon Table
- 26 Legends Cabin





# Mars Tryon 2\* - Long (ID: 22016) - 2 Star Long

www.CourseWalkApp.com



Distance: 3960 m  
Speed: 520 m/min  
Optimum Time: 7:37  
Time Limit: 15:14

- 1 Mars Starter
- 2 Cleghorn Shooting Stand
- 3 White Oak Table
- 4 Aquaduct
- 5ABC FEI Stabling Water
- 6AB Offset Brushes
- 7 Bird Feeder Gate
- 8AB Legends to Wedge
- 9 Moonshine Hut
- 10 Double Brush
- 11 Tryon Oxer
- 12AB Ethel M Samplers
- 13 Cedar Box
- 14 The Bee Hive
- 15 Trakehner
- 16ABC Mars Sustainability Bay
- 17AB FEI Stables
- 18AB The Marina
- 19 The Cardinal Stick Pile
- 20 Tryon Table
- 21 Legends Cabin



# Mars Tryon 4\* - Short (ID: 22014) - 4 Short

www.CourseWalkApp.com



Distance: 3785 m  
Speed: 570 m/min  
Optimum Time: 6:39  
Time Limit: 13:14

- 1 Mars Starter
- 2 Cleghorn Stand
- 3 White Oak Table
- 4 Aquaduct
- 5AB FEI Stabling Water
- 6ABC FEI Stabling Boxes
- 7AB Bridgett's Squirrels
- 8 Bird Feeder Gate
- 9AB Cabin To Triple Rail
- 10 Moonshine Pipe
- 11 Double Brush
- 12 Tryon Oxer
- 13AB Ethel M Samplers
- 14 Buckeye Nutrition Wagon
- 15 The Bee
- 16 Tryon Table
- 17AB Mars Sustainability Bay
- 18ABC Mars Equestrian at Chimney Rock
- 19ABC Mars Sustainability Bay
- 20 Stick Pile
- 21 Split Rail Table
- 22 Tryon Table
- 23 Legends Club



# Mars Tryon Intermediate HT (ID: 22022) - Intermediate

www.CourseWalkApp.com

Distance: 3040 m  
Speed: 550 m/min  
Optimum Time: 5:32  
Time Limit: 11:04



- 1 Tryon Log
- 2 FEI Stabling Box
- 3 Brush Box
- 4 Bird Feeder Gate
- 5 Rustic Table
- 6 Moonshine Hut
- 7 Red Roll Top
- 8 Double Brush
- 9 MIM Ozer
- 10AB Ethel M Samplers
- 11 Wagon
- 12 Bee Hive
- 13 MIM Table
- 14ABC Marina
- 15AB Chimney Rock
- 16 Chimney Rock
- 17AB Marina
- 18 Stick Pile
- 19 Tryon Table
- 20 MIM Table
- 21 Legends Plaza



# Mars Tryon Preliminary HT (ID: 22021) - Prelim

www.CourseWalkApp.com

Distance: 2870 m  
Speed: 520 m/min  
Optimum Time: 5:32  
Time Limit: 11:04



- 1 Tryon Log
- 2 Cedar Box
- 3 Diamond Brush
- 4 Brush Box
- 5 MIM Gate
- 6AB Cabin to Wedge
- 7 Moonshine Hut
- 8 Post and Rail
- 9 Double Brush
- 10 Rail Over Ditch
- 11 MIM Oxer
- 12AB Apple Country
- 13 Cedar Box
- 14 Bee Hive
- 15 MIM Table
- 16ABC Marina
- 17 Skinny Rail
- 18AB Marina
- 19 Stick Pile
- 20 Rolled Table
- 21 MIM Table
- 22 Legends Plaza



50 m  
300 ft