

Tryon Fall Series Prize List

TRYON FALL 1

SEPTEMBER 24-26, 2021

USEF Regional 1 B/Jumper Level 3
\$5K Welcome Classic
\$25K Regional Standard Grand Prix
USHJA National Hunter Derby

TRYON FALL 2

SEPTEMBER 29-OCTOBER 3, 2021

USEF Premier AA/Jumper Level 4
\$15K Welcome Classic
\$30K American Standard Grand Prix

TRYON FALL 3 / CSI 2*

OCTOBER 6-10, 2021

USEF Premier AA/Jumper Level 6
\$37K FEI Welcome Stakes
\$73K CSI 2* Grand Prix
\$25K American Standard Sunday Prix
USHJA National Hunter Derby

TRYON FALL 4 / CSI 3*

OCTOBER 12-17, 2021

USEF Premier AA/Jumper Level 6
\$37K FEI Welcome Stakes
\$137K CSI 3* Grand Prix
\$25K American Standard Sunday Prix
\$20K USHJA International Hunter Derby

TRYON FALL 5 / CSI 3*

OCTOBER 19-24, 2021

USEF Premier AA/Jumper Level 6
\$37K FEI Welcome Stakes
\$137K CSI 3* Grand Prix
\$25K American Standard Sunday Prix
\$25K USHJA International Hunter Derby
Tryon Developing Jumper Series Finals

WASHINGTON INT'L HORSE SHOW
AT TIEC / CSI 4*
OCTOBER 26-31, 2021
wihs.org

TRYON FALL 7

NOVEMBER 5-7, 2021

USEF Regional 1 B/Jumper Level 3
\$5K Welcome Classic
\$25K Regional Standard Grand Prix

TRYON FALL FINALE

NOVEMBER 12-14, 2021

USEF Regional 1 B/Jumper Level 3
\$5K Welcome Classic
\$25K Regional Standard Grand Prix

Sanctioned by

USEF, USHJA, NCHJA, SCHJA, GHJA, MHSA, VHSA, WIHS,
NAL, NHS, TAKE2 TB



FOR UPDATED SCHEDULES WITH NUMBER OF ENTRIES GO TO

WWW.TRYON.COM

TRYON INTERNATIONAL EQUESTRIAN CENTER COMPETITION COMMITTEE

Mark Bellissimo, Roger Smith, Jennifer Smith, Lisa Lourie, Howard Dvorkin,
Gwen Dvorkin, The Mercer Family

Tryon Equestrian Partners, LLC, President
Competition Manager
Director of Equestrian Operations
Lead Competition Secretary
Stabling/Hay/Shavings Manager
Horse Show Office Manager
Medical Coordinator

Sharon Decker
JP Godard (Lance Bennett - Fall 7)
Molly Oakman
Sarah Arpke
Lance Bennett
Michaela Orsky
Casey Elliott

**Official Competition
Veterinarian**

Tryon Equine Hospital
828.894.6065

Horse Show Office

Show Secretary, 828.863.1011
Awards, 828.863.1447
Mailroom, 828.863.1010

Stabling Reservations

Michaela Orsky, 828.863.1003

Hay/Shavings Deliveries

Lance Bennett, 828.863.1009

Tryon Resort Lodging

lodging@tryon.com
828.863.1015

The General Store

At Tryon Resort, 828.863.1432

Official Competition Farrier

Jacob Painter, 828-735-2674

Tryon Resort Security

828.863.1019
Or call 911 for Emergencies

**ALL HORSE SHOW ENTRIES AND HAY/SHAVINGS ORDERS MUST BE COMPLETED THROUGH
YOUR SHOW GROUNDS LIVE ACCOUNT AT WWW.TRYON.COM. FAXED/SCANNED/EMAILED
ENTRIES WILL NOT BE ACCEPTED.**

For any questions call the TIEC Horse Show Entry Office at 828.863.1011

LOCAL RESOURCES

St. Luke's Hospital

(Closest Hospital with
Emergency Services)
101 Hospital Drive, Columbus,
NC 28722
828.894.3311 (6.5 miles)

Ingles Market (Grocery Store)

1851 Hwy 14 E., Landrum, SC
29356
864.457.5187

CVS Pharmacy

333 W. Mills Street, Columbus,
NC 28722, 828.894.8247

Pierce Tire and Service Center

915 S. Trade Street, Tryon, NC
28782
828.859.2061

**Spartanburg Regional
Healthcare System**

(Closest Hospital with Level 1
Trauma Center)
101 E. Wood Street,
Spartanburg, SC 29303
864.560.6000 (38.1 miles)

Asheville Regional Airport

61 Terminal Drive, Fletcher, NC
28732
828.684.2226

**Charlotte Douglas
International Airport**

5501 Josh Birmingham Parkway,
Charlotte, NC 28208
704.359.4013

**Greenville- Spartanburg
International Airport**

2000 GSP Drive, Greer, SC
2965

DRIVING DIRECTIONS

Tryon International Equestrian Center: 25 International Blvd. Mill Spring, NC 28756, 828.863.1000

From Asheville, NC- Take 1-26 E, to US Hwy 74E to From Charlotte, NC: Take I-85 S, to US Hwy 74 W exit 170.
Make a right before the roundabout. to exit 170. Take a right on Pea Ridge Road.
From the roundabout, take the 1st right down the hill to the main entrance from John Sheehan Road.

OFFICIALS

TRYON FALL 1

USEF#331105

SEPTEMBER 24-26, 2021

USEF Regional 1 B/Jumper Level 3

\$5K Welcome Classic

\$25K Regional Standard Grand Prix

USHJA National Hunter Derby

OFFICIALS

Hunter Judges: Robert Allison, John Abbott

Jumper Judges: David White, John Rush

Stewards: Doug Curry, Lindy Esau

Schooling Supervisor: Pam Rush

Hunter Course Designer: Keith Bollotte

Jumper Course Designer: Nick Granat

TRYON FALL 2

USEF #315901

SEPTEMBER 29-OCTOBER 3, 2021

USEF Premier AA/Jumper Level 4

\$15K Welcome Classic

\$30K American Standard Grand Prix

OFFICIALS

Hunter Judges: Geoff Case, Leslie Pack

Jumper Judges: John Rush, Jeffrey Smiley

USEF Steward: Doug Curry, Robert Obermiller

Schooling Supervisor: Pam Rush

Hunter Course Designer: Dean Rheinheimer

Jumper Course Designers: Peter Grant, Nick Granat

TRYON FALL 3 / CSI 2*

USEF #332404

OCTOBER 6-10, 2021

USEF Premier AA/Jumper Level 6

\$37K FEI Welcome Stakes

\$73K CSI 2* Grand Prix

\$25K American Standard Sunday Prix

USHJA National Hunter Derby

OFFICIALS

Hunter Judges: Carol O'Brien, Scott Williamson

Jumper Judges: Keith Bollotte, Jeffrey Smiley

USEF Stewards: Robert Obermiller, Beverly Bedard

Schooling Supervisor: James Kovacs, Pam Rush

Hunter Course Designers: Lewis Pack

Jumper Course Designer: Peter Grant, Dean Rheinheimer

FEI OFFICIALS

FEI Course Designer: Guilherme Jorge (BRA)

FEI Jury: Mike Lowery (PGJ), Steve Sarafin, John Rush, Elena

Couttenye (FJ)

FEI Stewards: Eric Straus (CS), Madeleine Lopez (FS), Travis Page,

Laura Woodward, Christina Gonzalez, Heather Findlay

TRYON EQUUS FALL 4 / CSI 3*

USEF # 325138

OCTOBER 12-17, 2021

USEF Premier AA/Jumper Level 6

\$37K FEI Welcome Stakes

\$137K CSI 3* Grand Prix

\$25K American Standard Sunday Prix

\$20k USHJA International Hunter Derby

OFFICIALS

Hunter Judges: Scott Fitton, Jeane Marie Dunford

Jumper Judges: Jeffrey Smiley, Lewis Pack

USEF Stewards: Beverly Bedard, Robert Obermiller

Schooling Supervisor: Pam Rush, Doug Curry

Hunter Course Designer: Kevin Giblin

Jumper Course Designers: Keith Bollette, Dean Rheinheimer

FEI OFFICIALS

FEI Course Designer: Michel Valliencourt

FEI Jury: Cesar Hirsch (PGJ), Steve Sarafin, John Rush, FEI APPT. (FJ)

FEI Stewards: Eric Straus (CS),

Madeleine Lopez (FS), Travis Page, Laura Woodward, Cristina Gonzalaez, Diane Landreville

TRYON FALL 5 / CSI 3*

USEF#331106

OCTOBER 19-24, 2021

USEF Premier AA/Jumper Level 6

\$37K FEI Welcome Stakes

\$137K CSI 3* Grand Prix

\$25K American Standard Sunday Prix

\$25k USHJA International Hunter Derby

Tryon Developing Jumper Series Finals

Hunter Judges: Richard Slocum, Kat Mulkey

Jumper Judges: Brian Lookabill, Keith Bollotte, Jeffrey Smiley

USEF Stewards: Doug Curry, Beverly Bedard

Schooling Supervisor: Lindy Esau, Cynthia Murphy

Hunter Course Designers: Joe Carnicom

Jumper Course Designers: Anthony D'Ambrosio, Skip Bailey

FEI Course Designer: Olaf Peterson

FEI Jury: John Rush (PGJ), Peter Doubleday, Pam Rush,

FEI Appt. (FJ)

FEI Stewards: Eric Straus (CS), Gabriela Teuscher, Madeleine Lopez, Cristina Gonzalez, Laura Woodward, Amelia Gomez Su

TRYON FALL 7

USEF# 335519 November 5-7, 2021

USEF Regional 1B/Jumper Level 3

\$5K Welcome Classic

\$25K Regional Standard Grand Prix

USHJA National Hunter Derby

OFFICIALS

Hunter Judges - Kara Austin, Kathleen Stamps

Jumper Judges - Dave White

Steward - Pam Rush

Schooling Supervisor - Lindy Esau

Course Designer - Dean Rheinheimer

TRYON FALL Finale

USEF# 335520 November 12-14, 2021

USEF Regional 1B/Jumper Level 3

\$5K Welcome Classic

\$25K Regional Standard Grand Prix

USHJA National Hunter Derby

OFFICIALS

Hunter Judges - Danielle Ackley, Erica Huyler

Jumper Judges - Dave White

Steward - Don Schuster

Schooling Supervisor - Lindy Esau

Course Designer - Rick Cram

RULES AND REGULATIONS

Every class offered herein which is covered by the rules and specifications of the current USEF Rule Book will be conducted and judged in accordance therewith. Life, Senior active and junior active members shall be eligible to participate in all classes at Regular Competitions, Eventing Competitions at the Modified Level or above and Combined Driving Competitions at the Advanced Level, Dressage, Reining and Vaulting Competitions and Endurance Rides. A nonmember may participate as a handler, rider, driver, owner, lessee, agent, coach or trainer at Regular Competitions, Eventing Competitions, Dressage Competitions, Reining Competitions and Combined Driving Competitions upon payment of a \$45 Show Pass fee. Participants in the following classes are exempted from the Requirements of this rule: 1) leadline; 2) exhibitions; 3) games and races; 4) classes for 4-H members; 5) walk trot (exception: Friesian performance FR222) and academy classes (academy classes are classes limited to horses used regularly in a lesson program); 6) USDF introductory level tests, pas de deux and quadrille classes; 7) NRHA Endorsed Reining Competitions; 8) Opportunity classes; 9) citizens of other nations who have proof, in English, of current membership in good standing of their own National Federation; 10) USEA beginner novice division; and 11) assistant handlers in Dressage Sport Horse Breeding classes.

FEDERATION ENTRY AGREEMENT

By entering a Federation-licensed Competition and signing this entry blank as the Owner Lessee, Trainer, Manager, Agent, Coach, Driver, Rider, Handler, Vaulteur or Longeur and on behalf of myself and my principals, representatives, employees and agents, I agree that I am subject to the Bylaws and Rules of the United States Equestrian Federation, Inc. (the "Federation") and the local rules of the Tryon Horse Shows ("Competition"). I agree to be bound by the Bylaws and Rules of the Federation and of the competition. I will accept as final the decision of the Hearing Committee on any question arising under the Rules, and agree to release and hold harmless the competition, the Federation, their officials, directors and employees for any action taken under the Rules. I represent that I am eligible to enter and/or participate under the Rules, and every horse I am entering is eligible as entered. I also agree that as a condition of and in consideration of acceptance of entry, the Federation and/or Competition may use or assign photographs, videos, audios, cable-casts, broadcasts, internet, film new media or other likenesses of me and my horse taken during the course of the competition for the promotion, coverage or benefit of the competition, sport, or the Federation. Those likenesses shall not be used to advertise a product and they may not be used in such a way as to jeopardize amateur status. I hereby expressly and irrevocably waive and release any rights in connection with such use, including any claim to compensation, invasion of privacy, right of publicity, or to misappropriation. The construction and application of Federation rules are governed by the laws of the State of New York, and any action instituted against the Federation must be filed in New York State. See GR908.4.

WARNING: THE TRYON INTERNATIONAL EQUESTRIAN CENTER SUMMER SERIES, TRYON INTERNATIONAL EQUESTRIAN CENTER, ITS MANAGEMENT, OFFICERS, OWNERS, OFFICIALS, AND EMPLOYEES WILL NOT BE RESPONSIBLE FOR ANY ACCIDENT OR LOSS WHICH MAY OCCUR TO ANY EXHIBITOR SPECTATOR, GUEST, RIDER, GROOM, ATTENDANT OR OTHER EMPLOYEE, ANIMAL, VEHICLE, OR EQUIPMENT AT THE SHOW. THIS SHALL BE A CONDITION OF ENTRY TO THE SHOW OR SHOW GROUNDS.

The Horse Show Committee reserves the right to interpret all questions and conditions in regard to or arising out of, or incident to the show without claims for damages or recourse of any kind. All questions not covered in these Rules and Regulations shall be decided by the Horse Show Management, its decision to be final.

Management reserves the right to limit entries in any class, section or division, to refuse, accept conditionally, or to cancel any entries, disqualify any riders or exhibitors, prohibit exhibition of entries, and cancel award prizes, without any claim for damages; to change any course, to add a dotted line, to cancel or combine any unfilled classes, or to reschedule classes after due notice to exhibitors; to change rings and rotate judges; to change specifications in jumper classes as competition warrants. Every horse entered herein for competition will be under the control of the Horse Show Management, but the Show Management will in no case be responsible for any loss or damage that may occur, and it shall be a condition of entry that each exhibitor shall hold the horse show and the officials, employees, directors, officers, sponsoring entities of the horse show and the facilities at which the horse show is held blameless for any loss or accident to his horse(s), employee(s), or equipment which may occur from sickness, fire or other cause. While every effort has been made to avoid mistakes in this publication, the USEF, Tryon Horse Shows, Tryon International Equestrian Center, Equus Events, Inc. and its management and/or employees assume no liability to anyone for errors. Any significant errors or changes will be disclosed to competitors whose entries are accepted upon their acceptance, and otherwise in accordance with USEF rules.

REMINDER: All USEF Life and Senior Active members, as well as participants who have regular contact with minor athletes, are required to comply with the US Center for SafeSport training requirement to be eligible to participate in the competition. All participants must adhere to the US Center SafeSport Code, USEF Safe Sport Policy, and the Minor Athlete Abuse Prevention Policies. More information about these can be found at www.usef.org.

SCHEDULES: All Schedules are Tentative and subject to change.

Updated schedules and daily schedules are available at www.tryon.com.

PRIZE LISTS: Prize Lists can be found on www.tryon.coth.com website. Hard copies will be mailed on request.

ENTRIES: Entries must be postmarked or made online by the closing dates in order to avoid a late fee. Faxed, scanned and/or e-mailed entries will not be accepted.

CLOSING DATES for entries are as follows:

Fall 1-2, Closing date Sept. 15. Fall 3-5, Closing date Oct. 1.

Fall 7/Fall Finale Closing date November 1.

After the closing date stall fees are non-refundable. A \$50 Late Fee will apply for all entries not made online/postmarked by the closing dates. Scratches after the closing date will incur a \$50 Scratch Fee. Entries should be sent to the address as listed on the entry blank, or can be submitted via our online entry system at www.tryon.coth.com or www.showgroundslive.com. EMAILED/SCANNED/FAXED ENTRIES WILL NOT BE ACCEPTED. Back numbers will not be issued without a signed open check drawn on a US bank or credit card information lodged with the Horse Show Secretary. A \$50 fee will be charged for non-negotiable checks or credit cards declined for any reason. A \$60 Office Fee will be charged to each horse to cover adds/scratches, office services, etc. All accounts must be closed out by Sunday of each show week unless prior arrangements have been made with the horse show secretary. The entry form for each horse must include the following:

- Horse name and complete description
- Complete mailing addresses for owner/trainer/riders
- All mandatory signatures, including legal guardian in the case of a minor exhibitor
- All required organization membership numbers, USEF/USHJA horse registration numbers and microchip numbers
- Social Security or Federal ID number of owner or alternate prize money payee. No prize money will be applied until Tax ID#s and complete payee names/addresses/W-9's are on file with the Secretary. Prize money will be credited to your show

RULES AND REGULATIONS

account. Any overages will be mailed within 30 days of the close of the competition. In the event of unauthorized redeeming of a check, Tryon Horse Shows, LLC will provide check copies to exhibitors and will be held harmless from the collection process.

- All stabled horses/ponies will be assessed a mandatory Equine Nighttime Security Fee of \$20 per competition
- All showing horses/ponies will be assessed a mandatory \$15 Ambulance Fee per competition
- All riders participating in amateur or adult classes must be in possession of current amateur status issued by USEF, or apply for same at show
- Entries/post entries accepted based on stall availability; \$50 Late Fee

SCRATCHES: Horses may be scratched without a veterinarian's certificate by notifying the horse show secretary in writing. Prior to the closing date, all charges will be refunded. After the closing date, stalls are non-refundable and horses will be charged a \$50 scratch fee. No refunds to horses entered in classes not shown.

We encourage you to close out your account each week in person or online. If you do not, you automatically agree to authorize Tryon Horse Shows to charge your credit card or open check for all entry fees, stabling fees, association fees, etc. associated with your horse(s). If you dispute a charge made by Tryon Horse Shows, you may not be able to show until the dispute has been resolved.

**PLEASE READ OUR COVID ACTION PLAN ONLINE AT
WWW.TRYON.COM/COMPETE**

OFFICE HOURS:

DAY BEFORE FIRST DAY OF SHOW - 8:00AM-4:30PM SHOW DAYS - ONE HOUR BEFORE FIRST CLASS - 4:30PM
CLASS ENTRIES DUE BY 4:00PM FOR NEXT DAY. SCRATCHES MAY BE MADE IN OFFICE OR ONLINE BEFORE CLASS STARTS. HUNTER CLASSIC ENTRIES DUE BEFORE 1ST ROUND!!

PHOTO RELEASE: By signing the entry form I agree to waive the right to the use of my photos/videos at the competition and grant Tryon Horse Shows, LLC, and its agents full use of any and all competition photos and videos.

PROTECTIVE HEADGEAR: Protective headgear, properly secured, must be worn BY ALL RIDERS AT ALL TIMES WHEN MOUNTED, anywhere, anytime on the horse show grounds. Headgear for all riders must meet or exceed ASTM Standards: must carry the SEI tag; and be properly secured by a harness per USEF rules.

NON-SHOWING HORSES: All non-showing horses must have an entry blank on file in the office and will be assigned a number. A \$50 Non-Showing Fee will be assessed to any horse not entered in any classes.

TO RESERVE STALLS, PLEASE COMPLETE AND SUBMIT THE ONLINE STABLING REQUEST WHICH CAN BE FOUND UNDER THE COMPETITOR'S TAB AT WWW.TRYON.COM. CALL 828-863-1003 FOR ASSISTANCE. PLEASE DO NOT RESERVE STALLS ON THE ENTRY BLANK. STABLING MANAGER - LANCE BENNETT 828-863-1009.

STALLS: All stalls are non-transferable and remain under the ownership and control of Tryon International Equestrian Center. Permanent 10x12 stalls of wood/metal construction and temporary 10x10 stall of canvas/metal construction with doors. Flooring is rubber mats over stone dust. Stalls are available for \$225 for Fall 1. \$275 per stall Fall 2-5. \$200 for Fall 7, Fall Finale. Locking tack stalls are also available at the regular stall price. Stalls are not refundable after the closing date. To ensure stabling as well as your initial bedding/feed orders, please complete and

submit the online stabling request at www.tryon.com (under the competitor's tab). Any horse showing in classes that fall under the '24 Hour Rule' must have an unshared, assigned stall and will be assessed a stall fee. Non-stabled horses will pay a \$50 Grounds Fee.

STABLING: Will be available starting at 1:00 pm the day before Schooling Day. Check schedules for Schooling Day. Any and all requests for early arrival/late departure must be approved by the Stabling Manager. Early arrivals/late departures will incur a charge of \$50 per stall per day (or any portion thereof).

FEI STALLS: Permanent 10x12 stalls of wood/metal construction. One stall per each FEI horse is included in the FEI Event Fee. Additional FEI stalls, if available, are \$325. **FEI STABLING:** Will be available as per FEI draft schedule. Any and all requests for early arrival/late departure must be approved by the Stabling Manager. Early arrivals/late departures will incur a charge of \$50 per stall per day (or any portion thereof). FEI - please refer to FEI page herein.

TRAINER SPLITS: Trainer Splits are done as a courtesy and must be turned into the Horse Show Office by 12:00 noon on Friday. Any trainer accounts which have not been split, for any reason, will be the responsibility of the Trainer of record and will be charged to the Trainer.

LODGING: Please contact our Lodging Department at 828-863-1015 to inquire about available onsite/offsite lodging options, reserve a room, cabin or camper/ RV site or golf cart. All reservations and payment for all reservations must be made directly to the Lodging Department. Campers/RVs/cabins, etc. may NOT be put on show bills, nor split on Trainer Accounts.

MINORS/MINOR EXHIBITORS: Parent(s) or guardian(s) of minors/minor exhibitors shall hold the Horse Show Management and the Facility harmless for any injury to such minor. No child's entry will be accepted or number issued unless entry is signed by a parent or LEGAL guardian. The signature of unrelated persons WILL NOT be accepted. Minors who do not have a valid driver's license which allows them to operate a motorized vehicle in the state in which they reside will not be permitted to operate a motorized vehicle of any kind, including, but not limited to, golf carts, motorcycles, scooters, or farm utility vehicles, on the competition grounds of licensed competitions. Minors who have a valid temporary license may operate the above described motorized vehicles as long as they are accompanied by an adult with a valid driver's license. The parent/legal guardian, or individual who signs the entry blank as a parent or guardian of a minor operating a motorized vehicle in violation of this rule are solely responsible for any damages, claims, losses or actions resulting from that operation. Violations of this rule will be cause for penalties against those responsible for the child committing the offense. Wheelchairs and other mobility assistance devices for individuals with disabilities are exempt from this rule. The unsafe use of personal electronic transport devices, as determined by the competition officials and management in their sole discretion, that do not require a driver's license to operate, including but not limited to segways, hoverboards, and single wheeled scooters is prohibited on competition grounds. Operating such devices in areas where people gather may be deemed "unsafe use" if there is a risk of harm to others. If the operator of the device is a minor, the parent/legal guardian or individual who signs the entry blank as a parent or guardian of a minor operating the device in violation of this rule is accountable and may be subject to penalties. Wheelchairs and other mobility assistance devices for individuals with disabilities are exempt from this rule.

RINGS: All competition/riding rings have all-weather footing that consists of sand and synthetic material mixture and draining system. Rings 1-4 178'x390' each; Tryon Stadium 310'x250'; Ring 6/7 370'x420', Ring 8 150'x691'; International Arena 260'x325'; Longeing Area 420'x115'.

RULES AND REGULATIONS

COURSES: Management reserves the right to restrict the area of the courtesy circle, if deemed necessary, by a mandatory line ("dotted line") as per HU110.2.

DOGS: Dogs are not permitted to be loose on competition grounds and must be held on a leash or otherwise contained at all times. Individuals must not lead dogs on a leash while mounted. Dog owners are solely responsible for any damages, claims, losses or actions resulting from their dogs' behaviors. Dog owners failing to comply with this rule may be subject to penalty under Chapters 6 and 7, as well as issuance of warning cards pursuant to rule GR1301.6. Failure to maintain your dog under control, as defined here, will result in a \$100 fine assessed to the owner. In addition, pursuant to facility regulations, loose dogs will be removed from the show grounds by Animal Control, at the owner's expense and impounded.

PARKING: Fire regulations prohibit all vehicles, including trailers, vans and passenger vehicles from being parked in the stable areas. Vans and trailers will be allowed in the stable area only to load or off-load.

PARKING AREAS WILL BE DESIGNATED AND VIOLATORS WILL BE TOWED AWAY AT OWNER'S EXPENSE.

ANIMAL WELFARE: We require that all horses be treated with kindness, respect and compassion and should never be subject to mistreatment. Owners, trainers, riders and grooms, or their agents must use reasonable care in the handling and treatment of their horses whether owned or placed in their care for competition or for any other purpose. At all times, while the horse is on the show grounds,, we will provide for the continuous well-being of the horse by vigorously enforcing the rules of the USEF which pertain to the welfare of the horse. USEF rules defining policy regarding abuse and use of whips will be strictly enforced. No poling, use of bamboo off-set or excessive use of the whip will be tolerated. The well-being of the horse must be considered above the demands of the breeders, trainers, riders, owners, dealers, organizers, sponsors or officials. Violators may be subject to penalties pursuant to USEF rules. IN THE EVENT OF AN ACUTE AND SERIOUS INJURY TO OR ILLNESS OF A HORSE ON COMPETITION GROUNDS WHEN THE OWNER OR TRAINER OF THE HORSE OR AGENT OF THE OWNER IS NOT PRESENT, AFTER REASONABLE EFFORT TO CONTACT THAT INDIVIDUAL HAS BEEN MADE, COMPETITION MANAGEMENT,

IN CONSULTATION WITH A LICENSED EQUINE VETERINARIAN, MAY AUTHORIZE THE PROVISION OF EMERGENCE VETERINARY TREATMENT OF THE HORSE. IF COMPETITION MANAGEMENT SO AUTHORIZES TREATMENT UNDER THE PROVISIONS OF THIS RULE, COMPETITION MANAGEMENT AND VETERINARIAN ARE NOT LIABLE FOR ANY RESULTING COSTS, DAMAGES, LOSSES, CLAIM OR ACTIONS ARISING DIRECTLY OR INDIRECTLY FROM THE TREATMENT OF THE HORSE.

ELECTRICAL/FIRE REGULATIONS: All electrical installation and connections must meet all state and county codes. Aisles will be maintained clear for a minimum of six (6) feet wide by eight (8) feet high. No obstructions or projections shall be allowed in these aisles. No Class 1 Flammable liquids such as gasoline are allowed inside the buildings. Cooking is not permitted within the stable area. Anyone found in violation shall be subject to dismissal from further participation in the horse show without recourse.

MOTORIZED VEHICLES/GOLF CARTS: Under North Carolina State Laws and USEF rules, unlicensed drivers are not permitted to operate any motorized vehicles - ATV's, motorcycles, golf carts, etc., on the show grounds. Failure to abide by these regulations will subject the exhibitor to suspension from the horse show. See USEF GR 1301.7.

LIABILITY: Tryon Horse Shows, LLC, Tryon International Equestrian Center, Equestrian Sports Productions, their officials, and employees will not be responsible for any accident or loss which may occur to any exhibitor, spectators, guest, rider, groom, attendant, other employees, animals, or equipment at the events. All owners and competitors are personally responsible for damages to third persons caused by themselves, their employees, their agents, their horses, or their dogs. They are therefore strongly advised to take out third party insurance providing full coverage for participation in equestrian events, and to keep that policy up to date.

WARNING: UNDER NORTH CAROLINA LAWS, AN EQUINE ACTIVITY SPONSOR OR EQUINE PROFESSIONAL IS NOT LIABLE FOR AN INJURY TO, OR THE DEATH OF A PARTICIPANT IN EQUINE ACTIVITIES RESULTING EXCLUSIVELY FROM THE INHERENT RISKS OF EQUINE ACTIVITIES.



YOUNG HUNTERS (All weeks)

For eligibility, see HU132. Young Hunter ages must be verified directly with USEF prior to competing (HU132.4) Division Entry Fee Required at AA/A Rated shows

2'9" YOUNG HUNTER

Entry Fee: \$100/Division (Fall 2 through Fall 5)

Entry Fee: \$45 per class/\$100 Division (Fall 1, Fall 7, Fall Finale) 271,272- 2'9" Young Hunter
273- 2'9" Young Hunter Under Saddle

3' YOUNG HUNTER

Entry Fee: \$100/Division (Fall 2 through Fall 5)

Entry Fee: \$45 per class/\$100 Division (Fall 1 Fall 7, Fall Finale) 274,275- 3' Young Hunter
276- 3' Young Hunter Under Saddle

3'3" YOUNG HUNTER

Entry Fee: \$100/Division (Fall 2 through Fall 5)

Entry Fee: \$45 per class/\$100 Division (Fall 1 Fall 7, Fall Finale) 277,278- 3'3" Young Hunter
279- 3'3" Young Hunter Under Saddle

FALL 2,3,4,5

ZONE 3 ADULT-AMATEUR & CHILDREN'S HUNTERS

(ZONE 3 SPECS AVAILABLE AT WWW.USHJA.ORG AND IN SHOW OFFICE)

\$500 ADULT-AMATEUR HUNTER 18-35 3' (RATED C/ZONE 3)

Entry fee- \$185 division or \$45 per class 221,222,223,224 \$100 Adult-Amateur Hunter 18-35
225 \$100 Adult-Amateur Hunter Under Saddle 18-35

\$500 M&S IND ADULT-AMATEUR HUNTER 36-49 3' (RATED C/ZONE 3)

Entry fee- \$185 division or \$45 per class 226,227,228,229 \$100 Adult-Amateur Hunter 36-49
230 \$100 Adult-Amateur Hunter Under Saddle 36-49

\$500 M&S INS ADULT-AMATEUR HUNTER 50 & OVER 3' (RATED C/ZONE 3)

Entry fee- \$185 division or \$45 per class 231,232,233,234 \$100 Adult-Amateur Hunter 50&Over
235 \$100 Adult-Amateur Hunter Under Saddle 50&Over

\$500 CHILDREN'S HUNTER 14&UNDER (RATED C/ZONE 3)

Entry fee- \$185 division or \$45 per class 236,237,238,239- \$100 Children's Hunter 14&Under
240- \$100 Children's Hunter Under Saddle 14&Under

\$500 CHILDREN'S HUNTER 15-17 (RATED C/ZONE 3)

Entry fee- \$185 division or \$45 per class 241,242,243,244- \$100 Children's Hunter 15-17 245-
\$100 Children's Hunter Under Saddle 15-17

Entry Fee - \$150 division or \$35 per class 266,267,268,269 - \$30 Children's Pony Hunter 270 -
\$30 Children's Pony Hunter Under Saddle

USEF RATED AA/A HUNTER SECTIONS - Fall 2-5

All Hunter classes, Classics, and divisions to be held and judged in accordance with USEF and USHJA Zone 3 Rules and Regulations. Hunter sections with less than eight entries may be canceled or combined. Ribbons 1 - 8 unless otherwise noted. Division eligibility requirements are available at www.usef.org.

\$1000 HIGH PERFORMANCE CONFORMATION 3'9"

Model Entry Fee- \$20 Entry Fee- \$200 Division
98- High Performance Conf. Model
99, 100, 101, 102(handy)- \$200 High Performance Conf.
Hunter 103- \$200 High Performance Conformation Under Saddle

\$1000 GREEN CONFORMATION 3'6"

Model Entry Fee- \$20 Entry Fee- \$200 Division
104- Green Conformation Model
105,106,107,108(handy) - \$200 Green Conformation Hunter
109- \$200 Green Conformation Hunter Under Saddle

\$2400 COCA-COLA HIGH PERFORMANCE HUNTER 4'-4'6"

Entry Fee- \$270 Division or \$75 per class
111, 112, 113, 114(handy)- \$480 High Performance Hunter 4'
115- \$480 High Performance Hunter Under Saddle

\$800 COCA-COLA PERFORMANCE HUNTER 3'6"

Entry fee- \$190 division or \$55 per class
116,117,118,119(handy)- \$160 Performance Hunter 3'6"
120 \$160 Performance Hunter 3'6" Under Saddle

\$800 COCA-COLA PERFORMANCE HUNTER 3'3"

Entry fee- \$190 division or \$55 per class
121,122,123,124(handy)- \$160 Performance Hunter 3'3"
125- \$160 Performance Hunter 3'3" Under Saddle

\$2000 GREEN HUNTER 3'9"

Entry Fee- \$245 division
126, 127, 128, 129(handy) \$400 Green Hunter 3'9"
130- \$400 Green Hunter 3'9" Under Saddle

\$2000 GREEN HUNTER 3'6"

Entry Fee- \$245 division
131,132,133,134(handy) \$400 Green Hunter 3'6"
135- \$400 Green Hunter 3'6" Under Saddle

\$1000 GREEN HUNTER 3'3"

Entry Fee- \$200 Division
136,137,138,139- \$200 Green Hunter 3'3"
140- \$200 Green Hunter 3'3" Under Saddle

\$1000 GREEN HUNTER 3'

Entry Fee- \$200 Division
141,142,143,144- \$200 Green Hunter 3'
145- \$200 Green Hunter 3' Under Saddle

\$1500 AMATEUR-OWNER HUNTER 18-35 3'6"

Entry Fee- \$240 Division
146,147,148,149(handy)- \$300 Am-Owner Hunter 18-35 3'6"
150 \$300 Am-Owner Hunter 18-35 3'6" Under Saddle

\$1500 AMATEUR-OWNER HUNTER 36 & OVER 3'6"

Entry Fee- \$240 Division
151,152,153,154(handy)- \$300 Am-Owner Hunter 36& O 3'6"
155- \$300 Am-Owner Hunter 36& O 3'6"

\$1500 AMATEUR-OWNER HUNTER 18-35 3'3"

Entry Fee- \$240 Division
156,157,158,159(handy) \$300 Am-Owner Hunter 18-35 3'3"
160- \$300 Am-Owner Hunter 18-35 3'3" Under Saddle

\$1500 AMATEUR-OWNER HUNTER 36 & OVER 3'3"

Entry Fee- \$240 Division
161,162,163,164(handy) \$300 Am-Owner 36&Over 3'3"
165- \$300 Am-Owner 36&Over Under Saddle 3'3"

\$1500 SMALL JUNIOR 15 & UNDER 3'6"

Entry Fee- \$240 Division
166,167,168,169(handy) \$300 Small Junior 15&U
170 \$300 Small Junior 15&U Under Saddle

\$1500 SMALL JUNIOR HUNTER 16-17 3'6"

Entry Fee- \$240 Division
171,172,173,174(handy) \$300 Small Junior 16-17
175 \$300 Small Junior 16-17

\$1500 MAIN STREET INS LARGE JUNIOR HUNTER 15&UNDER 3'6"

Entry Fee- \$240 Division
176,177,178,179(handy)- \$300 Large Junior Hunter 15&U
180 \$300 Large Junior Hunter 15&U Under Saddle

\$1500 MAIN STREET INS LARGE JUNIOR HUNTER 16-17 3'6"

Entry Fee- \$240 Division
181,182,183,184(handy)- \$300 Large Junior Hunter 16-17
185 \$300 Large Junior Hunter 16-17 Under Saddle

\$1500 JUNIOR HUNTER 15 & UNDER 3'3"

Entry Fee- \$240 Division
186,187,188,189(handy)- \$300 Junior Hunter 15 &U 3'3"
190- \$300 Junior Hunter 15 &U 3'3"

\$25,000 TRYON's DEVELOPING JUMPER CHAMPIONSHIPS (Fall 5 Only)

Open to horses recorded with USEF and Age Verified in accordance with USEF Policies and Procedures. All Developing Jumper classes will be held in accordance with JP116. Hind Boots: See JP 116.2a.

There is no pre-qualification required for participation in these classes.

Three-Round Competition with possibility of a jump-off. Faults cumulative from all three rounds. The results will be based on total score (faults) after the three rounds. In the event of a tie for first place after three rounds, a jump-off will be required of all horses still tied for first. The Order Of Go for Round 3 to be determined by placings of Round 2.

Round 1 - Table II. Order Of Go done by random draw.

Round 2 - Table II. Order Of Go will be determined by faults and time taken from Round 1.

Round 3 - Table II (*2a) with jump-off to follow for horses still tied for first place. Order of Go will be determined by faults and time taken from Round 2. The time taken from initial phase of Round 3 will determine placing for horses not tied for first.

600 - \$5,000 Tryon DJS 5 Year-Old Championship

Fences: 1.20m

Entry Fee: \$200 (includes all rounds - 601, 602, 603)

604 - \$10,000 Tryon DJS 6 Year-Old Championship

Fences: 1.30m

Entry Fee: \$300 (includes all rounds - 605, 606, 607)

608 - \$10,000 Tryon DJS 7-Year Old Championship

Fences: 1.30m-1.35m

Entry Fee: \$300 (includes all rounds - 609, 610, 611)

USEF RATED AA/A HUNTER SECTIONS - Fall 2-5

\$1500 JUNIOR HUNTER 16-17 3'3"

Entry Fee- \$240 Division
 191,192,193,194(handy)- \$300 Junior Hunter 16-17 3'3"
 195- \$300 Junior Hunter 16-17 3'3" Under Saddle

\$1000 SMALL PONY HUNTER 2'3"

Entry Fee- \$200 Division
 196,197,198,199(handy)- \$200 Small Pony Hunter 200
 \$200 Small Pony Hunter Under Saddle

\$1000 MEDIUM PONY HUNTER 2'6"

Entry Fee- \$200 Division
 201,202,203,204(handy)- \$200 Medium Pony Hunter
 205 \$200 Medium Pony Hunter Under Saddle

\$1000 LARGE PONY HUNTER 2'9"-3'

Entry Fee- \$200 Division
 206,207,208,209(handy)- \$200 Large Pony Hunter
 210 \$200 Large Pony Hunter Under Saddle

\$800 SM/MED GREEN PONY 2'3"/2'6"

Entry Fee- \$190 Division
 211,212,213,214-\$160 Sm/Med Green
 215 \$160 Sm/Med Green Pony Under Saddle

\$800 LARGE GREEN PONY 2'9"

Entry Fee- \$190 Division
 216,217,218,219-\$160 Large Green Pony
 220 \$160 Large Green Pony Under Saddle



COOLVIO™

CANINE & EQUINE
 Health • Energy • Comfort

LIGHT THERAPY + COOLING

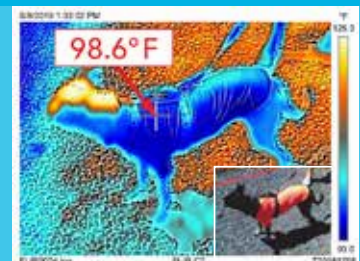
PATENTED FABRIC TECHNOLOGY

Coolvio's Patented Fabric Emits Healthy Red and Near-Infrared Light. This is the same light used by veterinarians in laser therapy to reduce pain and inflammation, speed wound healing, increase energy and performance, reduce anxiety, and boost optimal health.

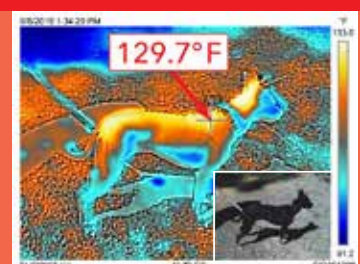
www.coolvio.com
 @CoolvioLife



With Coovlio



Without Coovlio



HEALTH DOCUMENT REQUIREMENTS

The following health documents must be presented with the horse(s) at the gate upon arrival, and also presented to the horse show office in order to pick up numbers:

- 1 - Negative Coggins test within one year.
- 2 - Proof of EHV1 and EHV4 vaccinations within 6 months as per USEF Rule GR845
- 3 - Out-of-state horses must have a 30-day interstate health certificate.

IMPORTANT - Please note:

In order to be allowed to compete, the following USEF/USHJA rules are in effect:

- All competing members 18 years of age and older must have completed the Safe Sport Training through USEF in order to compete in any capacity. This includes all owners, trainers, riders and coaches.
- All horses/ponies must be microchipped in order to be allowed to show. Exempt from this requirement are Walk-Trot and Opportunity entries and those others listed in USEF GR 901.

MICROCHIP AND SAFE SPORT REQUIREMENTS WILL BE CHECKED IN THE HORSE SHOW OFFICE

HUNTER CLASS AND CLASSICS PRIZE MONEY

	1	2	3	4	5	6	7	8	9	10
\$1,000	\$300	\$220	\$150	\$80	\$70	\$50	\$40	\$40	\$25	\$25
\$500	\$150	\$110	\$75	\$60	\$40	\$35	\$15	\$15	-	-
\$480	\$145	\$106	\$82	\$60	\$47	\$20	\$20	-	-	-
\$400	\$120	\$88	\$56	\$46	\$40	\$30	\$20	-	-	-
\$300	\$100	\$60	\$50	\$35	\$30	\$25	-	-	-	-
\$200	\$60	\$45	\$35	\$25	\$20	\$15	-	-	-	-
\$160	\$48	\$35	\$24	\$21	\$20	\$12	-	-	-	-
\$100	\$30	\$22	\$16	\$12	\$10	\$10	-	-	-	-
\$60	\$20	\$15	\$10	\$8	\$7	-	-	-	-	-
\$40	\$16	\$10	\$8	\$6	-	-	-	-	-	-
\$30	\$12	\$8	\$5	\$5	-	-	-	-	-	-

JUMPER AND GRAND PRIX SECTION (DOES NOT INCLUDE FEI CLASSES) PRIZE MONEY DISTRIBUTION

	1	2	3	4	5	6	7	8	9	10	11	12
\$25,000 =/+	30%	22%	13%	8%	6%	5%	4%	3%	3%	2%	2%	2%
\$15,000	\$4300	\$3200	\$2100	\$1400	\$1100	\$900	\$625	\$625	\$375	\$375	-	-
\$10,000	\$2900	\$2200	\$1150	\$850	\$750	\$600	\$425	\$425	\$350	\$350	-	-
\$5,000	\$1400	\$1000	\$675	\$575	\$425	\$350	\$300	\$275	-	-	-	-
\$3,000	\$825	\$500	\$400	\$325	\$300	\$250	\$200	\$200	-	-	-	-
\$2,000	\$550	\$320	\$240	\$210	\$190	\$170	\$160	\$160	-	-	-	-
\$1,000	\$260	\$190	\$140	\$105	\$85	\$80	\$70	\$70	-	-	-	-
\$750	\$225	\$165	\$130	\$100	\$70	\$60	-	-	-	-	-	-
\$500	\$140	\$110	\$80	\$60	\$60	\$50	-	-	-	-	-	-
\$400	\$105	\$80	\$70	\$50	\$50	\$45	-	-	-	-	-	-
\$300	\$90	\$60	\$45	\$40	\$35	\$30	-	-	-	-	-	-
\$80	\$35	\$20	\$15	\$10	-	-	-	-	-	-	-	-

Nutrena® Athlete and Renowned
Show Hunter Rider, **John French**



CREATE A FORCE TO BE RECKONED WITH.

PROFORCE®

John knows ProForce® isn't just "any" premium horse feed. It's formulated with proprietary Rebound Technology™ for faster recovery and Topline Balance® to support topline muscle and core strength. It's a shame our competitors, and John's, just can't seem to keep up.

VISIT [NUTRENAWORLD.COM/RIDER/JOHN-FRENCH](https://www.nutrenaworld.com/rider/john-french)
TO FIND OUT HOW JOHN DOES IT.

TRYON FALL 1

RING 2 THURSDAY	JARRET SCHMID RING 2 FRIDAY	REYNOLDS FAMILY RING 2 SATURDAY	REYNOLDS FAMILY RING 2 SUNDAY
9AM Back number warm-ups 9am - 4:30pm	8AM 248,249 USHJA Hunter 2' 250 USHJA Hunter 2' u/s 251,252 USHJA Hunter 2'3 253 USHJA Hunter 2'3 u/s 254,255 USHJA Hunter 2'6 301,302 Baby Green Hunter 256 USHJA Hunter 2'6 u/s 305 Baby Green u/s 257,258 USHJA Hunter 2'9 259 USHJA Hunter 2'9 u/s 502 Ariat Adult Medal 510 Bryan Jones Medal 483,484 Modified Adult 2'9" *BR 528 Adult Eq Flat 526,527 Adult Equitation 3' 522 12-14 Equitation 2'9 523 12-14 Eq Flat 520 11-under Eq 521 11-under Eq Flat 485,486 School Pony 2'9" *BR 487,488 School Pony 2'6" *BR 489,490 School Pony 2' *BR	8AM 303,304 Baby Green Hunter 221,222 Adult Am 514 WIHS Pony (s-m-l) open card 196,197 Pony Hunter 200 Pony Hunter u/s 211,212 Green Pony 215 Green u/s 508 NCHJA Pony Medal 266,267 Childs Pony 326,327 Pre-Adult Hunter 330 Pre-Adult Hunter u/s 321,322 Pre-Child Hunter 325 Pre-Child Hunter u/s 331,332 Short Stirrup 336,337 Long Stirrup 316,317 Foothills Ch/Adult 2' 320 Foothills Ch/Adult 2' u/s 351,352,353 Opp Walk Trot 357,358,359 Opp Walk Trot Canter 341,342 Cross-rails 346,347 Adult Cross-rails 306,307 Foothills Hunter 2'6 308 Foothills 2'6 u/s 309,310 Foothills Hunter 2'9 311 Foothills Hunter 2'9 u/s	8:00AM 354,355,356 Opp Walk Trot 360,361,362 Opp Walk Trot Canter 343,344 Cross-rails 348,349 Ch/Adult Cross-rails 345 Cross-rails u/s 350 Ch/Adult Cross-rails u/s 225 Adult Am u/s 223,224 Adult Am 40 \$500 Adult Am Classic 505 M/Sterling USEF Pony (open card) 198 Pony Hunter 35 \$500 Pony Hunter Classic 213 Green Pony 36 \$500 Green Pony Classic 270 Child Pony u/s 268,269 Childs Pony Hunter 70 Child Pony Challenge 529 Tryon Adult Medal 2'6 328,329 Pre-Adult Hunter 530 Tryon Child Medal 2'6 323,324 Pre-Child Hunter 72 Pre-Child Hunter Challenge 335 Short Stirrup u/s 333,334 Short Stirrup 73 S. Stirrup Hunter Challenge 340 Long Stirrup u/s 338,339 Long Stirrup 74 L. Stirrup Hunter Challenge 318,319 Foothills Ch/Adult 2'
GORDON WRIGHT RING 3 THURSDAY	GORDON WRIGHT RING 3 FRIDAY	GORDON WRIGHT RING 3 SATURDAY	GORDON WRIGHT RING 3 SUNDAY
8:00 AM Back number warm-ups 9am - 4:00pm	8:00 AM 711 1.10m Jumper II2b 712 1.10m Jumper II2b 714 1.15m Jumper II2b 715 1.15m Jumper II2b 700 .80m Jumper II 701 .80m Jumper II 704 .90m Jumper II 705 .90m Jumper II 708 1.0m Jumper II 717 Take 2 T-bred 1.0m II2b 734 1.10 Ch/Adult Jumper II2b 746 1.15 Non Pro II2b	8:00 AM 531 USHJA Jumping Medal 3'3 515 WIHS Jumper Phase 506 Platinum Performance USEF Talent Search 2' 747 1.15m Non Pro II2b 709 1.0m Jumper II 718 Take 2 T-bred 1.0m II2b 726 1.0m Ch/Adult Jumper II2b 727 1.0m Ch/Adult Jumper II2b 719 Take 2 T-bred 1.0m II2b 702 .80m Jumper II 703 .80m Jumper II2b 706 .90m Jumper II 720 .90m Jumper non-pro II2b 723 Pony Jumper II2b	8:00 AM 736 1.10 Ch/Adult Jumper II2I 728 1.0M Ch/Adult Jumper II2I 729 1.0M Ch/Adult Jumper Stakes 2b 710 1.0m Jumper II 721 .90m Jumper non-pro II2I 722 .90m Jumper non-pro II2b 724 Pony Jumper II2b 725 Pony Jumper II2b
RING 4 THURSDAY	REYNOLDS GRAND HUNTER RING 4 FRIDAY	REYNOLDS GRAND HUNTER RING 4 SATURDAY	REYNOLDS GRAND HUNTER RING 4 SUNDAY
Back number warm-ups 9am - 4:30pm	8:30 AM 98 Conf Model 280 Open Hunter *BR 131,132 Green Hunter 3'6 135 Green Hunter 3'6 u/s 126,127 Green Hunter 3'9 130 Green Hunter U/S 99,100 Conf Hunter 103 Conf Hunter u/s 111,112 High Perform. Hunter** 115 High Performance u/s 136,137 Green Hunter 3'3 140 Green Hunter 3'3 u/s 141,142 Green Hunter 3' 145 Green Hunter 3'u/s 277,278 Young Hunter 3'3 279 Young Hunter 3'3 U/S 274,275 Young Hunter 3'6 276 Young Hunter 3'6 U/S 271 272 Young 2'9 273 Young Hunter 2'9 U/S 260,261 USHJA Hunter 3' 262 USHJA Hunter 3'u/s 370,371 Take 2 Tbred Hunter 372 Take 2 u/s 481,482 Modified Am 3'3 *BR 493,494 Modified Jr 3'3" *BR 491,492 Modified Child 2'9 *BR	8:45 AM 26 USHJA \$2,500 HUNTER DERBY 101 Conf. Hunter 3'9 128 Green Hunter 3'9 133 Green Hunter 3' 138 Green Hunter 3'/3'3 123 Performance 3'3 118 Performance Hunter 3'6 113 High Perf. Hunter 121,122 Perf Hunter 3'3 125 Performance 3'3 u/s 116,117 Perf Hunter 3'6 120 Performance 3'6 u/s 525 15-17 Eq Flat 524 15-17 Equitation 3'6 507 EJ Haun 156,157 Am/O Hunter 3'3 146,147 Am/O Hunter 3'6 516 WIHS Hunter (open card) 166,167 Junior Hunter 3'6 186,187 Junior Hunter 3'3 532 Hamel Foundation NHS 3'3 509 NCHJA Child Medal 501 THIS Children's Medal 236,237 Childrens Hunter	8:30 AM 504 USEF Hunter Seat Medal 500 ASPCA Maclay 160 Am/Owner 3'3 u/s 158 Am/Owner Hunter 3'3 150 Am/Owner 3'6 u/s 148 Am/Owner 3'6 170 Junior Hunter 3'6 u/s 168 Junior Hunter 3'6" 190 Junior Hunter 3'3 u/s 188 Junior Hunter 3'3 503 SCHJA Governors Cup 240 Childrens Hunter u/s 238,239 Childrens Hunter 39 \$500 Ch Hunter Classic 312,313 Foothills Hunter 3' 314 Foothills Hunter 3' u/s
TRYON STADIUM THURSDAY	TRYON STADIUM FRIDAY	TRYON STADIUM SATURDAY	TRYON STADIUM SUNDAY
	8:00AM 770 Tryon DJS 5yr Old II 773 Tryon DJS 6yr Old II2b 776 Tryon DJS 7yr Old II2b 809 1.20M Jumper II2b 751 1.20m JrAm Jumper II2b 813 1.30m Jumper II2b 763 1.30m Jr/Am Jumper II2b 767 1.40m Jr/Am Jumper II2b 901 \$5000 Welcome Stakes 1.35M Table II 2 a/b	8:00AM 771 Tryon DJS 5yr Old II 774 Tryon DJS 6yr Old II2b 777 Tryon DJS 7yr Old II2b 768 1.40m Jr/Am Jumper II2I 814 1.30m Jumper II2I 764 1.30m Jr/Am Jumper II2I 810 1.20m Jumper II2I 752 1.20m JrAm Jumper II2I 713 1.10m Jumper II2I 735 1.10 Ch/Adult Jumper II2b	8:00 AM 772 Tryon DJS 5yr Old II 775 Tryon DJS 6yr Old II2b 778 Tryon DJS 7yr Old II2b 811 1.20m Jumper Stakes II2b 753 1.20m Jr/Am Jumper Classic II2a-b 815 1.30m Jumper Stakes II2b 765 1.30m Jr/Am Classic II2a-b 769 1.40m Jr/Am Classic II2a-b 1:00PM 902 \$25,000 Fall 1 Grand Prix Grand Prix Table II 2 A (regional) 737 1.10 Ch/Adult Jumper Classic II2b 716 1.15m Jumper II2I 748 1.15 Non Pro II2I



Emergency Services
Foothills Medical Associates
Foothills General Surgery
Saluda Family Medicine
Radiology
Rosenberg Bone and Joint
Steps to Home
Senior Life Solutions
St. Luke's Cancer & Infusion
St. Luke's Pain Center
St. Luke's Rehabilitation Center
St. Luke's Urology Associates

WORKING HARDER

to Keep You Healthier

The key to a great competition is preparation.

Learning to practice the right things right is the most significant first step to having a successful competition. Incorporating hill work, cavaletti work, and jumping not only challenges your horse's intellect, but it also ensures a well-rounded fitness regime.

Likewise, at St. Luke's, we know that we need to practice the right things right to become a better hospital. It's been arduous work, but we've earned **5-Stars** for patient experience. There are 6,146 hospitals in the United States. And we are one of only 266 hospitals nationwide to make this distinction.

The intentional practice has made us a much better hospital. Compare for yourself at medicare.gov/hospitalcompare/search.html



(828) 894-3311

StLukesNC.org

101 Hospital Drive
Columbus, NC 28722

 **St. Luke's**
HOSPITAL

TRYON FALL 2

9/26/2021

TRYON STADIUM TUESDAY	TRYON STADIUM WEDNESDAY	TRYON STADIUM THURSDAY	TRYON STADIUM FRIDAY	TRYON STADIUM SATURDAY	TRYON STADIUM SUNDAY
FLATWORK 9AM-12:30PM	8:30AM 770 Tryon DJS 5yr Old II 773 Tryon DJS 6yr Old II2b 776 Tryon DJS 7yr Old II2b 821 1.40m Jumper II2b 813 1.30m Jumper II2b 817 1.35m Jumper II2b	8:30AM 771 Tryon DJS 5yr Old II 774 Tryon DJS 6yr Old II2b 777 Tryon DJS 7yr Old II2b 822 1.40m Jumper II21 818 1.35m Jumper II21 1:00 PM 901 \$15,000 Welcome Stakes 1.40M Table II 2 A	8:30AM 823 1.40m Jumper Stakes II2b 815 1.30m Jumper Stakes II2b 819 1.35m Jumper Stakes II2b 811 1.20m Jumper Stakes II2b 767 1.40m Jr/Am Jumper II2b 763 1.30m Jr/Am Jumper II2b	8:30AM 772 Tryon DJS 5yr Old II 775 Tryon DJS 6yr Old II2b 778 Tryon DJS 7yr Old II2b 768 1.40m Jr/Am Jumper II21 764 1.30m Jr/Am Jumper II21 7:00 PM 902 \$30,000 Fall 2 Grand Prix Table II 2 A (Am. Standard)	8:15 AM 769 1.40m Jr/Am Classic II2A/B 765 1.30m Jr/Am Classic II2B 401 Leadline 761 1.20m Am Jumper Classic II2B

INTERNATIONAL	INTERNATIONAL ARENA	INTERNATIONAL ARENA	INTERNATIONAL ARENA	INTERNATIONAL ARENA	INTERNATIONAL ARENA
CLOSED	8:00AM 809 1.20m Jumper II2b 711 1.10m Jumper II2b 714 1.15m Jumper II2b	8:00AM 810 1.20m Jumper II21 814 1.30m Jumper II21 712 1.10m Jumper II2b	8:00AM 713 1.10m Jumper II21 716 1.15m Jumper II21 759 1.20m Am Jumper II2b 755 1.20 Junior Jumper II2b 734 1.10 Adult Jumper II2b 740 1.10 Child's Jumper II2b	8:00AM 756 1.20m Junior II21 760 1.20m Am Jumper II21 735 1.10 Adult Jumper II2b 741 1.10 Child's Jumper II2b 736 1.10 Adult Jumper II21 742 1.10 Child's Jumper II21	8:00AM 757 Junior Jumper Classic II2B 737 1.10 Adult Jumper Classic II2b 743 1.10 Children's Jumper Classic II2b

RING 2 TUESDAY	JARRETT SCHMID RING 2 WEDNESDAY	JARRETT SCHMID RING 2 THURSDAY	JARRETT SCHMID RING 2 FRIDAY	JARRETT SCHMID RING 2 SATURDAY	JARRETT SCHMID RING 2 SUNDAY
Back number warm-ups 9am - 4:30pm	8:30AM 284 Open Hunter BR* 248,249 USHJA Hunter 2' 250 USHJA Hunter 2' u/s 251,252 USHJA Hunter 2'3 u/s 253 USHJA Hunter 2'3 u/s 254,255 USHJA Hunter 2'6 301,302 Baby Green Hunter 256 USHJA Hunter 2'6 u/s 305 Baby Green u/s 257,258 USHJA Hunter 2'9 259 USHJA Hunter 2'9 u/s 260,261 USHJA Hunter 3' 262 USHJA Hunter 3' u/s 370,371 Take 2 Tbred Hunter 372 Take 2 u/s	8:00 AM 285 Open Hunter 306,307 Foothills Hunter 2'6 308 Foothills 2'6 u/s 303,304 Baby Green Hunter 309,310 Foothills Hunter 2'9 311 Foothills Hunter 2'9 u/s 312,313 Foothills Hunter 3' 314 Foothills Hunter 3' u/s	8:00AM 483,484 Modified Adult 2'9* 528 Adult Eq Flat 526, 527 Adult Equitation 3' 533 NHS THIS Adult Medal 3' 485,486 Schooling Pony 2'9* 487,488 Schooling Pony 2'6 489,490 Schooling Pony 2' 520 11-under Eq 2'3 521 11-under Eq Flat 522 12-14 Equitation 2'9 523 12-14 Eq Flat	8:00 AM 502 ARIAT Adult Medal 533 NHS THIS Adult Medal 3' 286 Open Hunter 231,232 Adult Am 50+ 226,227 Adult Am 36-49 221,222 Adult Am 18-35 510 Bryan Jones Medal 514 WIHS Pony *open 206,207 Large Pony 210 Large Pony u/s 201,202 Medium Pony u/s 205 Medium Pony u/s 196,197 Small Pony 200 Small Pony u/s 508 NCHJA Pony 211,212 Sm/Medium Green 215 Sm/Med Green u/s 216,217 Large Green Pony 220 Large Green Pony u/s 266,267 Childs Pony 270 Child Pony u/s 326,327 Pre-Adult Hunter 330 Pre-Adult Hunter u/s 321,322 Pre-Child Hunter 325 Pre-Child Hunter u/s 331,332 Short Stirrup 336,337 Long Stirrup 316,317 Foothills Ch/Adult 2' 320 Foothills Ch/Adult 2' u/s 351,352,353 Walk Trot 357,358,359 Walk Trot Canter 288 Open Hunter 341,342 Cross-rails 346,347 Ch/Adult Cross-rails	8:00AM 354,355,356 Walk Trot 360,361,362 Walk Trot Canter 345 Cross-rails u/s 350 Ch/Adult Cross-rails u/s 343,344 Cross-rails 348,349 Ch/Adult Cross-rails 235 Adult Am 50+ u/s 233,234 Adult Am 50+ 230 Adult Am 36-49 u/s 228,229 Adult Am 36-49 62 \$500 Adult 36+ Classic 225 Adult Am 18-35 u/s 223,224 Adult Am 18-35 61 \$500 Adult 18-35 Classic 505 M/Sterling USEF Pony *open 208,209 Large Pony 53 Large Pony Classic 203,204 Medium Pony 52 Med Pony Classic 198,199 Small Pony 51 Small Pony Classic 213,214 Sm/Medium Green 218,219 Large Green Pony 54 Green Pony Classic 268,269 Childs Pony Hunter 70 Child Pony Challenge 529 Tryon Adult Medal 2'6 328,329 Pre-Adult Hunter 71 Pre-Adult Hunter Challenge 530 Tryon Child Medal 2'6 323,324 Pre-Child Hunter 72 Pre-Child Hunter Challenge 335 Short Stirrup u/s 333,334 Short Stirrup 73 S. Stirrup Hunter Challenge 340 Long Stirrup u/s 338,339 Long Stirrup 74 L. Stirrup Hunter Challenge

RING 3 TUESDAY	GORDON WRIGHT RING 3 WEDNESDAY	GORDON WRIGHT RING 3 THURSDAY	GORDON WRIGHT RING 3 FRIDAY	GORDON WRIGHT RING 3 SATURDAY	GORDON WRIGHT RING 3 SUNDAY
Back number warm-ups 9am - 4pm	8:00 AM 700 .80m Jumper II 704 .90m Jumper II 708 1.0m Jumper II 717 Take 2 T-bred 1.0m II2b	8:00 AM 715 1.15m Jumper II2b 701 .80m Jumper II 705 .90m Jumper II 709 1.0m Jumper II 718 Take 2 T-bred 1.0m II2b	8:00 AM 702 .80m Jumper II 706 .90m Jumper II 710 1.0m Jumper II 719 Take 2 T-bred 1.0m II21 746 1.15 Non Pro II2b	7:45 AM 531 USHJA Jumping Medal 3'3 515 WIHS Jumper Phase 506 Platinum Performance USEF Talent Search 2* NOT BEFORE 8:30AM 747 1.15m Non Pro II2b 726 1.0M Adult Jumper II2b 730 1.0M Child's Jumper II2b 727 1.0M Adult Jumper II2b 731 1.0M Child's Jumper II2b 703 .80m Jumper II2b 720 .90m Jumper non-pro II2b 721 .90m Jumper non-pro II21 723 Pony Jumper II2b 724 Pony Jumper II2b	7:45 AM 748 1.15 Non Pro II2b 728 1.0M Adult Jumper II21 732 1.0M Child's Jumper II21 729 1.0M Adult Jumper Stakes 2b 733 1.0M Child's Jumper Stakes 2b 722 .90m Jumper non-pro II2b 725 Pony Jumper II2b

RING 4 TUESDAY	REYNOLDS FAMILY RING 4 WEDNESDAY	REYNOLDS FAMILY RING 4 THURSDAY	REYNOLDS FAMILY RING 4 FRIDAY	REYNOLDS FAMILY RING 4 SATURDAY	REYNOLDS FAMILY RING 4 SUNDAY
Back number warm-ups 9am - 4:30pm	8:00 AM 98 High Perf Conf Model 104 Green Conf Model 280 Open Hunter *BR 131,132 Green Hunter 3'6 135 Green Hunter 3'6 u/s 126,127 Green Hunter 3'9 130 Green Hunter 3'9 u/s 99,100 High Perf Conf Hunter 3'9 103 High Perf Conf Hunter u/s 105,106 Green Conf Hunter 3'6 109 Green Conf Hunter u/s 111,112 High Perf. Hunter 115 High Perf. Hunter u/s 141,142 Green Hunter 3' 145 Green Hunter 3' u/s 136,137 Green Hunter 3'3 140 Green Hunter 3'3 u/s 271,272 Young Hunter 3' 273 Young Hunter 3' u/s 274,275 Young Hunter 3'3 276 Young Hunter 3'3 u/s 277,278 Young Hunter 3'6 279 Young Hunter 3'6 u/s	8:00 AM 133,134 Green Hunter 3'6 128,129 Green Hunter 3'9 31 3'6/3'9 Green Incentive 101,102 High Perf Conf. HTR 3'9 107,108 Green Conf Hunter 3'6 113,114 High Perf. Hunter 143,144 Green Hunter 3' 138,139 Green Hunter 3'3 30 3'3/3' Green Incentive 116,117 Performance Hunter 3'6 120 Performance 3'6 u/s 121,122 Performance Hunter 3'3 125 Performance 3'3 u/s	8:00 AM 123,124 Performance Hunter 3'3* 118,119 Performance Hunter 3'6 481,482 Mod Am-O Hunter BR** 493,494 Modified Jr 3'3* BR** 525 15-17 Eq Flat 524 15-17 Equitation 3'6 491,492 Modified Child 501 THIS Children's Medal 509 NCHJA Child Medal	8:00 AM 156,157 Am/O Hunter 18-35 3'3 161,162 Am/O Hunter 36+ 3'3 146,147 Am/O Hunter 18-35 3'6 151,152 Am/O Hunter 36+ 3'6 516 WIHS Hunter 166,167 Small Jr 15- 170 Small Jr 15- u/s 171,172 Small Jr 16-17 175 Small Jr 16-17 u/s 176,177 Large Jr 15- 180 Large Jr 15- u/s 181,182 Large Jr 16-17 185 Large Jr 16-17 u/s 186,187 Jr Hunter 15- 3'3 190 Jr Hunter 15- 3'3 u/s 191,192 Jr Hunter 16-17 3'3 195 Jr Hunter 16-17 3'3 u/s 507 EJ Haun 503 SCHJA Governors Cup 236,237 Childrens Hunter 14- 240 Childrens Hunter 14- u/s 241,242 Childrens Hunter 15-17 245 Childrens Hunter 15-17 u/s	8:00 AM 504 USEF Pessoa Medal 500 ASPCA Maclay 532 Hamel Foundation NHS 3'3* 160 Am/Owner 18-35 3'3 u/s 158,159 Am/Owner Hunter 18-35 3'3 165 Am/Owner 36+ 3'3 u/s 163,164 Am/Owner Hunter 36+ 3'3 58 \$1000 Am/Owner Classic 3'3 150 Am/Owner 18-35 3'6 u/s 148,149 Am/Owner 18-35 3'6 155 Am/Owner 36+ 3'6 u/s 153,154 Am/Owner 36+ 3'6 57 \$1000 Am/Owner Classic 3'6 168,169 Small Jr 15- 173,174 Small Jr 16-17 178,179 Large Jr 15- 183,184 Large Jr 16-17 55 \$1000 Junior Htr Classic 3'6 188, 189 Jr Hunter 15- 3'3 193, 194 Jr Hunter 16-17 3'3 56 \$1000 Junior Htr Classic 3'3 238,239 Childrens Hunter 14- 59 \$500 Childs 14- Classic 243,244 Childrens Hunter 15-17 60 \$500 Childs 15-17 Classic

It's lonely at the top.

BUT SAMANTHA WAS NEVER MUCH FOR COMPANY.

#ProElitePro, Samantha Schaefer



PROELITE

Samantha knows to give her champions the best chance to win, they need the very best nutrition. That's why they eat ProElite® feeds. Because it's the only line of ultra-premium horse feed with nutrition-locked formulas for consistent nutritional quality.

VISIT PROELITEHORSEFEED.COM TO LEARN MORE.

2021 TRYON FALL 3 CSI 2* USEF PREMIER

9/26/2021

TRYON STADIUM TUESDAY	TRYON STADIUM WEDNESDAY	TRYON STADIUM THURSDAY	TRYON STADIUM FRIDAY	TRYON STADIUM SATURDAY	TRYON STADIUM SUNDAY
FLATWORK 9AM-12PM	8:30AM 821 1.40m Jumper II2b 813 1.30m Jumper II2b 817 1.35m Jumper II2b 2PM 1 \$10,000 Two Phase 1.40m Stakes FEI art 274.2.5.2	8:15AM 771 DJS 5yr Old II 774 DJS 6yr Old II2b 777 DJS 7yr Old II2b 822 1.40m Jumper II21 814 1.30m Jumper II21	8:15AM 823 1.40m Jumper Stakes II2b 815 1.30m Jumper Stakes II2b 819 1.35m Jumper Stakes II2b 1PM 3 \$6,000 1.45m Speed Stakes FEI art 238.2.1 767 1.40m Jr/Am Jumper II2b 763 1.30m Jr/Am Jumper II2b 7 PM 772 Tryon DYS 5yr Old II 775 Tryon DJS 6yr Old II2b 778 Tryon DJS 7yr Old II2b	8:00 AM 515 WIHS Jumper 506 Platinum Performance USEF Talent Search 2* Not Before 9 AM 768 1.40m Jr/Am Jumper II21 764 1.30m Jr/Am Jumper II21 7:00 PM 4 \$73,000 CSI 2* Grand Prix FEI art 238.2.2	8:15 AM 769 1.40m Jr/Am Classic II2a 761 1.30m Jr/Am Classic II2a 772 1.20m Low Am Classic II2a 2:00 PM 902 \$25,000 Sunday Classic Grand Prix (Am Standard) Table II 2 A
BACK NUMBER WARM-UPS 7-8:15PM (Under the lights)	FEI STABLING CLOSSES 7:30AM FEI JOG 8AM	1PM 2 \$37,000 Welcome Stakes 1.45m art 238.2.2			

RING 1 TUESDAY	CARTER BROWN RING 1 WEDNESDAY	CARTER BROWN RING 1 THURSDAY	CARTER BROWN RING 1 FRIDAY	CARTER BROWN RING 1 SATURDAY	CARTER BROWN RING 1 SUNDAY
			Back number warm-ups 8:30am - 12:00pm 1:00PM 520 11-under Eq 2'3 521 11-under Eq Flat 485,486 Schooling Pony 2'9" 487,488 Schooling Pony 2'6" 489,490 Schooling Pony 2' 508 NCHJA Pony L-M-S	8:30AM** 514 WIHS Pony *open card 284 Open Hunter (through Long S) 206,207 Large Pony 210 Large Pony u/s 201,202 Medium Pony 205 Medium Pony u/s 196,197 Small Pony 200 Small Pony u/s 211,212 Sm/Medium Green 215 Sm/Med Green u/s 216,217 Large Green Pony 220 Large Green Pony u/s 266,262 Childs Pony 270 Child Pony u/s 351,352,353 Walk Trot 357,358,359 Walk Trot Canter 343,344 Cross-rails 348,349 Adult Cross-rails	8:15 AM 354,355,356 Walk Trot 360,361,362 Walk Trot Canter 345 Cross-rails u/s 350 Ch/Adult Cross-rails u/s 341,342 Cross-rails 346,347 Adult Cross-rails 505 M/S USEF Pony *open through small 208,209 Large Pony 53 Large Pony Classic 203,204 Medium Pony 52 Med Pony Classic 198,199 Small Pony 51 Small Pony Classic 213,214 Sm/Medium Green 218,219 Large Green Pony 54 \$500 Adult Am 36+ Classic 243,244 Childs Pony Hunter 70 Child Pony Challenge

RING 2 TUESDAY	JARRETT SCHMID RING 2 WEDNESDAY	JARRETT SCHMID RING 2 THURSDAY	JARRETT SCHMID RING 2 FRIDAY	JARRETT SCHMID RING 2 SATURDAY	JARRETT SCHMID RING 2 SUNDAY
Back number warm-ups 9am - 4:30pm	8:30 AM 381 Open Hunter BR* 251,252 USHJA Hunter 2'3 253 USHJA Hunter 2'3 u/s 254,258 USHJA Hunter 2'6 301,302 Baby Green Hunter 256 USHJA Hunter 2'6 u/s 259 USHJA Hunter 2'9 u/s 260,261 USHJA Hunter 3' 268 USHJA Hunter 3' u/s 266,267 Young Hunter 3' 268 Young Hunter 3' u/s 276,277 Young Hunter 3'3 278 Young Hunter 3'3 u/s 281,282 Young Hunter 3'6 283 Young Hunter 3'6 u/s	8:30 AM 306,307 Foothills Hunter 2'6 303,304 Baby Green Hunter 308 Foothills 2'6 u/s 305 Baby Green u/s 309,310 Foothills Hunter 2'9 311 Foothills Hunter 2'9 u/s 312,313 Foothills Hunter 3' 314 Foothills Hunter 3' u/s 370,371 Take 2 Tbred Hunter 372 Take 2 u/s 121,122 Performance Hunter 3'3 125 Performance 3'3 u/s	9AM 483,484 Modified Adult 525 Adult Eq Flat 522 Adult Equitation 3' 502 ARIAT Adult Medal 501 THIS Children's Medal 522 12-14 Equitation 2'9 523 12-14 Eq Flat	8:00AM 510 Bryan Jones Medal 226,227 Adult Am 50+ 221,222 Adult Am 36-49 216,217 Adult Am 18-35 509 NCHJA Child Medal 503 SCHJA Governors Cup 529 Tryon Adult Medal 2'6 326,327 Pre-Adult Hunter 330 Pre-Adult Hunter u/s 530 Tryon Child Medal 2'6 321,322 Pre-Child Hunter 325 Pre-Child Hunter u/s 331,332 Short Stirrup 336,337 Long Stirrup 335 Short Stirrup u/s 340 Long Stirrup u/s 316,317 Foothills Ch/Adult 2' 320 Foothills Ch/Adult 2' u/s	8:00 AM 500 ASPCA Maclay 504 USEF Pessoa Medal 220 Adult Am 18-35 u/s 218,219 Adult Am 18-35 61 \$500 Adult Am 18-35 Classic 225 Adult Am 36-49 u/s 223,224 Adult Am 36-49 230 Adult Am 50+ u/s 228,229 Adult Am 50+ 62 \$500 Adult Am 36+ Classic 328,329 Pre-Adult Hunter 71 PreAdult Hunter Challenge 323,324 Pre-Child Hunter 72 PreChild Hunter Challenge 333,334 Short Stirrup 73 S. Stirrup Hunter Challenge 338,339 Long Stirrup 74 L. Stirrup Hunter Challenge 318,319 Foothills Ch/Adult 2'

RING 3 TUESDAY	GORDON WRIGHT RING 3 WEDNESDAY	GORDON WRIGHT RING 3 THURSDAY	GORDON WRIGHT RING 3 FRIDAY	GORDON WRIGHT RING 3 SATURDAY	GORDON WRIGHT RING 3 SUNDAY
Back number warm-ups 9am - 4pm	8:00 AM 711 1.10m Jumper II 714 1.15m Jumper II2b 700 .80m Jumper II 704 .90m Jumper II 708 1.0m Jumper II 717 Take 2 T-bred 1.0m II2b	8:00 AM 701 .80m Jumper II2b 705 .90m Jumper II2b 709 1.0m Jumper II2b 718 Take 2 T-bred 1.0m II2b	8:30 AM 702 .80m Jumper II21 706 .90m Jumper II21 710 1.0m Jumper II21 719 Take 2 T-bred 1.0m II21 734 1.10m Adult Jumper II2b 740 1.10m Child's Jumper II2b 746 1.15m Non Pro II2b	8:30 AM 726 1.0m Adult Jumper II2b 730 1.0m Child's Jumper II2b 727 1.0m Adult Jumper II2c 731 1.0m Child's Jumper II2c 720 .90m Jumper non-pro II2b 721 .90m Jumper non-pro II21 703 .80m Jumper II 724 Pony Jumper II2b	8:00 AM 728 1.0m Adult Jumper II21 732 1.0m Child's Jumper II21 729 1.0 Adult Jumper Classic 733 1.0 Child's Jumper Classic 725 Pony Jumper II2b

RING 4 TUESDAY	REYNOLDS FAMILY RING 4 WEDNESDAY	REYNOLDS FAMILY RING 4 THURSDAY	REYNOLDS FAMILY RING 4 FRIDAY	REYNOLDS FAMILY RING 4 SATURDAY	REYNOLDS FAMILY RING 4 SUNDAY
Back number warm-ups 9am - 4:30pm	8:00 AM 98 High Perf Conf Model 104 Green Conf Model 360 Open Hunter *BR 126,127 Green Hunter 3'9 130 Green Hunter 3'9 u/s 131,132 Green Hunter 3'6 135 Green Hunter 3'6 u/s 105,106 Green Conf Hunter 3'6 109 Green Conf Hunter u/s 99,100 High Perf Conf Hunter 3'9 103 High Perf Conf Hunter u/s 111,112 High Perf. Hunter 115 High Perf. Hunter u/s 141,142 Green Hunter 3' 145 Green Hunter 3' u/s 136,137 Green Hunter 3'3 140 Green Hunter 3'3 u/s	8:00 AM 128,129 Green Hunter 3'9 133,134 Green Hunter 3'6 101,102 High Perf. Conf. Hunter 3'9 113,114 High Perf. Hunter 107,108 Green Conf Hunter 3'6 31 3'6/3'9 Green Incentive 143,144 Green Hunter 3' 138,139 Green Hunter 3'3 30 3'3/3' Green Incentive 116,117 Performance Hunter 3'6 120 Performance 3'6 u/s	8:00 AM 26 \$10,000 USHJA National Hunter Derby 118,119 Performance Hunter 3'6 123,124 Performance Hunter 3'3* 481,482 Mod Am-O Hunter BR** 493,494 Modified Jr 3'3* BR** 525 15-17 Eq Flat 524 15-17 Equitation 3'6 507 EJ Haum 491, 492 Modified Child	8:00 AM 283 Open Hunter *BR 156,157 Am/O Hunter 18-35 3'3 161,162 Am/O Hunter 36+ 3'3 146,147 Am/O Hunter 18-35 3'6 151,152 Am/O Hunter 36+ 3'6 516 WIHS Hunter 166,167 Small Jr 15- 170 Small Jr 15- u/s 171,172 Small Jr 16-17 175 Small Jr 16-17 u/s 176,177 Large Jr 15- 180 Large Jr 15- u/s 181,182 Large Jr 16-17 185 Large Jr 16-17 u/s 186,187 Junior Hunter 15- 3'3 190 Junior Hunter 15- 3'3 u/s 191,192 Junior Hunter 16-17 3'3 195 Junior Hunter 3'3 16-17 u/s 231,232 Childrens Hunter 14- 235 Childrens Hunter 14- 236,237 Childrens Hunter 15-17 240 Childrens Hunter 15-17 u/s	8:00 AM 160 Am/Owner 18-35 3'3 u/s 158,159 Am/Owner Hunter 18-35 3'3 165 Am/Owner 36- 3'3 u/s 163,164 Am/O Hunter 36+ 3'3 58 \$1000 Am/Owner Classic 3'3 150 Am/Owner 18-35 3'6 u/s 148,149 Am/Owner 18-35 3'6 155 Am/Owner 36+ 3'6 u/s 153,154 Am/Owner 36+ 3'6 57 \$1000 Am/Owner Classic 3'6 168,169 Small Jr 15- 173,174 Small Jr 16-17 178,179 Large Jr 15- 183,184 Large Jr 16-17 55 \$1000 Junior Hunter Classic 3'6 188, 189 Junior Hunter 3'3 193,194 Junior Hunter 16-17 3'3 56 \$1000 Junior Hunter Classic 3'3 233,234 Childrens Hunter 14- 59 \$500 Childs 14-Classic 238,239 Childrens Hunter 15-17 60 \$500 Childs 15-17 Classic

INTERNATIONAL TUESDAY	INTERNATIONAL WEDNESDAY	INTERNATIONAL THURSDAY	INTERNATIONAL FRIDAY	INTERNATIONAL SATURDAY	INTERNATIONAL SUNDAY
CLOSED	8:30 AM 770 Tryon DJS 5yr Old II 773 Tryon DJS 6yr Old II2b 776 Tryon DJS 7yr Old II2b 809 1.20m Jumper II2b	8:00 AM 712 1.10m Jumper II2b 715 1.15m Jumper II2b 810 1.20m Jumper II21 818 1.35m Jumper II21	8:00 AM 713 1.10m Jumper II21 716 1.15m Jumper II21 811 1.20m Jumper Stakes II2b 759 1.20m Low Am Jumper II2b 755 1.20m Low Jr Jumper II2b	8:00 AM 760 1.20m Am Jumper II21 756 1.20M Jr Jumper II21 747 1.15m Non Pro II2b 735 1.10m Adult Jumper II2b 741 1.10m Child's Jumper II2b	8:00 AM 736 1.10m Adult Jumper II21 742 1.10m Child's Jumper II21 737 \$2000 1.10m Adult Jumper Classic II2b 743 \$2000 1.10m Childrens Jumper Classic II2b 757 1.20m Low Junior Classic II2a 748 1.15m Non Pro II21

**KIDS' ACTIVITIES ★ HORSES
RESTAURANTS ★ SHOPS**



JOIN US ON:

JUNE 12

JULY 10

AUGUST 14

SEPTEMBER 11

OCTOBER 9, 16, 23 & 30



2021 TRYON FALL 4 CSI 3* USEF PREMIER

STADIUM TUESDAY	TRYON STADIUM WEDNESDAY	TRYON STADIUM THURSDAY	TRYON STADIUM FRIDAY	TRYON STADIUM SATURDAY	TRYON STADIUM SUNDAY
closed	8:00AM 821 1.40m Jumper II2b 813 1.30m Jumper II2b 12PM 1 \$2,000 Two Phase 1.40m Stakes FEI art 274.2.5.3 2PM 2 \$37,000 Two Phase 1.45m Stakes FEI art 274.2.5.3	8:00AM 822 1.40m Jumper II21 818 1.35m Jumper II21 12PM 3 \$37,000 Welcome Stakes 1.50m art 238.2.2	8:00AM 823 1.40m Jumper Stakes II2b 819 1.35m Jumper Stakes II2b 1PM 4 \$6,000 1.45m Speed Stakes FEI art 238.2.1 767 1.40m Jr/Am Jumper II2b	8:00 AM 772 Tryon DYS 5yr Old II 775 Tryon DJS 6yr Old II2b 778 Tryon DJS 7yr Old II2b 768 1.40m Jr/Am Jumper II21 764 1.30m Jr/Am Jumper II21 7PM 5 \$137,000 CSI 3* Grand Prix FEI art 238.2.2	8:15 AM 769 1.40m Jr/Am Classic II2a/b 765 1.30m Jr/Am Classic II2b 761 1.20m Low Am Classic II2b 1:30PM 5 \$25,000 Sunday Classic GRAND PRIX (Am Standard) Table II2A
INTERNATIONAL TUESDAY	INTERNATIONAL STADIUM WEDNESDAY	INTERNATIONAL STADIUM THURSDAY	INTERNATIONAL STADIUM FRIDAY	INTERNATIONAL STADIUM SATURDAY	INTERNATIONAL STADIUM SUNDAY
	8:00 AM 770 Tryon DJS 5yr Old II 773 Tryon DJS 6yr Old II2b 776 Tryon DJS 7yr Old II2b 809 1.20m Jumper II2b 817 1.35m Jumper II2b	8:00 AM 774 Tryon DJS 6yr Old II2b 777 Tryon DJS 7yr Old II2b 712 1.10m Jumper II2b 810 1.20m Jumper II21 814 1.30m Jumper II21	8:00 AM 27 \$20,000 USHJA International Hunter Derby 811 1.20m Jumper Stakes II2b 815 1.30m Jumper Stakes II2b 763 1.30m Jr/Am Jumper II2b 759 1.20m Low Am Jumper II2b 755 1.20m Low Jr Jumper II2b	8:30AM 760 1.20m Am Jumper II21 756 1.20M Jr Jumper II21 735 1.10m Adult Jumper II2b 741 1.10m Child's Jumper II2b	8:30AM 761 \$3000 1.20m Low Junior Classic II2a 736 1.10m Adult Jumper II21 742 1.10m Child's Jumper II21 737 \$2000 1.10m Adult Jumper Classic II2b 743 \$2000 1.10m Ch Classic II2B
RING 1 TUESDAY	CARTER BROWN RING 1 WEDNESDAY	CARTER BROWN RING 1 THURSDAY	CARTER BROWN RING 1 FRIDAY	CARTER BROWN RING 1 SATURDAY	CARTER BROWN RING 1 SUNDAY OCT- 7
			Back number warm-ups 8:30am - 12:00pm 1:00PM 520 11-under Eq 2'3 521 11-under Eq Flat 485,486 Schooling Pony 2'9" 487,488 Schooling Pony 2'6" 489,490 Schooling Pony 2' 508 NCHJA Pony L-M-S	8:30 AM** 514 WIHS Pony *open card 206,207 Large Pony 210 Large Pony u/s 201,202 Medium Pony 205 Medium Pony u/s 196,197 Small Pony 200 Small Pony u/s 211, 212 Sm/Medium Green 215 Sm/Med Green u/s 217 Large Green Pony 220 Large Green Pony u/s 241,242 Childs Pony Hunter 245 Child Pony u/s 351, 352, 353 Walk Trot 357, 358, 359 Walk Trot Canter 343,344 Cross-rails 348,349 Adult Cross-rails	8:15 AM 354, 355, 356 Walk Trot 360, 361, 362 Walk Trot Canter 345 Cross-rails u/s 350 Ch/Adult Cross-rails u/s 341,342 Cross-rails 346,347 Child/Adult Cross-rails 505 M/S USEF Pony *open through small pony 208,209 Large Pony 530 Large Pony Classic 203,204 Medium Pony 529 Med Pony Classic 198,199 Small Pony 51 Small Pony Classic 213, 214 Sm/Medium Green 218, 219 Large Green Pony 54 \$500 Large Pony Classic 243,244 Childs Pony Hunter 40 Child Pony Challenge
RING 2 TUESDAY	JARRET SCHMIDT RING 2 WEDNESDAY	JARRET SCHMIDT RING 2 THURSDAY	JARRET SCHMIDT RING 2 FRIDAY	JARRET SCHMIDT RING 2 SATURDAY	JARRET SCHMIDT RING 2 SUNDAY
Back number warm-ups 9am - 4:30pm	8:30 AM 281 Open Hunter BR* 248, 249 USHJA Hunter 2' 250 USHJA Hunter 2' u/s 251,252 USHJA Hunter 2'3 253 USHJA Hunter 2'3 u/s 254,255 USHJA Hunter 2'6 301,302 Baby Green Hunter 256 USHJA Hunter 2'6 u/s 257,258 USHJA Hunter 2'9 259 USHJA Hunter 2'9 u/s 260,261 USHJA Hunter 3' 268 USHJA Hunter 3'u/s	8:30 AM 306,307 Foothills Hunter 2'6 303,304 Baby Green Hunter 308 Foothills 2'6 u/s 305 Baby Green u/s 309,310 Foothills Hunter 2'9 311 Foothills Hunter 2'9 u/s 312,313 Foothills Hunter 3' 314 Foothills Hunter 3' u/s 370, 371 Take 2 Tbred Hunter 372 Take 2 u/s 121,122 Performance Hunter 3'3 125 Performance 3'3 u/s	8:30 AM 123,124 Performance Hunter 3'3* 266,267 Young Hunter 3' 268 Young Hunter 3' u/s 276,277 Young Hunter 3'3 278 Young Hunter 3'3 u/s 281,282 Young Hunter 3'6 283 Young Hunter 3'6 u/s 483,484 Modified Adult 2'9 *BR 528 Adult Eq Flat 527 Adult Equitation 3' 502 ARIAT Adult Medal 501 THIS Children's Medal 522 12-14 Equitation 2'9 523 12-14 Eq Flat	8:00AM 510 Bryan Jones Medal 226,227 Adult Am 50+ 221,222 Adult Am 36-49 216,217 Adult Am 18-35 509 NCHJA Child Medal 503 SCHJA Governors Cup 529 Tryon Adult Medal 2'6 326,327 Pre-Adult Hunter 330 Pre-Adult Hunter u/s 530 Tryon Child Medal 2'6 321,322 Pre-Child Hunter 325 Pre-Child Hunter u/s 331,332 Short Stirrup 336,337 Long Stirrup 335 Short Stirrup u/s 340 Long Stirrup u/s 316,317 Foothills Ch/Adult 2' 320 Foothills Ch/Adult 2' u/s	8:00 AM 500 ASPCA Maclay 504 USEF Pessoa Medal 220 Adult Am 18-35 u/s 218,219 Adult Am 18-35 61 \$500 Adult Am 18-35 Classic 225 Adult Am 36-49 u/s 223,224 Adult Am 36-49 230 Adult Am 50+ u/s 228,229 Adult Am 50+ 22 \$500 Adult Am 36+ Classic 328,329 Pre-Adult Hunter 71 Pre-Adult Hunter Challenge 323,324 Pre-Child Hunter 72 Pre-Child Hunter Challenge 333,334 Short Stirrup 73 S. Stirrup Hunter Challenge 338,339 Long Stirrup 74 L. Stirrup Hunter Challenge 318,319 Foothills Ch/Adult 2'
RING 3 TUESDAY	GORDON WRIGHT RING 3 WEDNESDAY	GORDON WRIGHT RING 3 THURSDAY	GORDON WRIGHT RING 3 FRIDAY	GORDON WRIGHT RING 3 SATURDAY	GORDON WRIGHT RING 3 SUNDAY
Back number warm-ups 9am - 4pm	8:00 AM 711 1.10m Jumper II 714 1.15m Jumper II2b 700 .80m Jumper II 704 .90m Jumper II 708 1.0m Jumper II 717 Take 2 T-bred 1.0m II2b	8:00 AM 711 Tryon DJS 5yr Old II 715 1.15m Jumper II2b 701 .80m Jumper II2b 705 .90m Jumper II2b 709 1.0m Jumper II2b 718 Take 2 T-bred 1.0m II2b	8:30 AM 713 1.10m Jumper II21 716 1.15m Jumper II21 702 .80m Jumper II21 706 .90m Jumper II21 710 1.0m Jumper II21 719 Take 2 T-bred 1.0m II21 734 1.10m Adult Jumper II2b 740 1.10m Child's Jumper II2b 746 1.15m Non Pro II2b	8AM 515 WIHS Jumper 506 Platinum Performance USEF Talent Search 2' 747 1.15m Non Pro II2b 726 1.0m Adult Jumper II2b 730 1.0m Child's Jumper II2b 727 1.0m Adult Jumper II2c 731 1.0m Child's Jumper II2c 720 .90m Jumper non-pro II2b 721 .90m Jumper non-pro II21 703 .80m Jumper II 723 Pony Jumper II2b	8:00 AM 748 1.15m Non Pro II21 728 1.0M Adult Jumper II21 732 1.0M Child's Jumper II21 729 1.0 Adult Jumper Stakes 2b 733 1.0 Child's Jumper Stakes 2b 722 .90m Jumper non-pro II2b 724 Pony Jumper II2b 725 Pony Jumper II2b
RING 4 TUESDAY	REYNOLDS FAMILY RING 4 WEDNESDAY	REYNOLDS FAMILY RING 4 THURSDAY	REYNOLDS FAMILY RING 4 FRIDAY	REYNOLDS FAMILY RING 4 SATURDAY	REYNOLDS FAMILY RING 4 SUNDAY
Back number warm-ups 9am - 4:30pm	8:00 AM 98 High Perf Conf Model 104 Green Conf Model 280 Open Hunter *BR 126,127 Green Hunter 3'9 130 Green Hunter 3'9 u/s 131,132 Green Hunter 3'6 135 Green Hunter 3'6 u/s 105,106 Green Conf Hunter 3'6 109 Green Conf Hunter u/s 99,100 High Perf Conf Hunter 3' 103 High Perf Conf Hunter u/s 111,112 High Perf. Hunter 115 High Perf. Hunter u/s 141,142 Green Hunter 3' 145 Green Hunter 3' u/s 136,137 Green Hunter 3'3 140 Green Hunter 3'3 u/s	8:00 AM 128,129 Green Hunter 3'9 133,134 Green Hunter 3'6 101,102 High Perf Conf. Hunter 3'9 113,114 High Perf. Hunter 107,108 Green Conf Hunter 3'6 31 3'6/3'9 Green Hunter Incentive 143,144 Green Hunter 3' 138,139 Green Hunter 3'3 30 3'6/3'9 Green Hunter Incentive 120 Performance Hunter 3'6 120 Performance 3'6 u/s	AFTER HUNTER DERBY 118,119 Performance Hunter 3'6 481,482 Mod Am-O Hunter BR** 493,494 Modified Jr 3'3* BR** 525 15-17 Eq Flat 524 15-17 Equitation 3'6 507 EJ Haun 491,492 Modified Child 2'9 *BR	8:00 AM 284 Open Hunter *BR 156,157 Am/O Hunter 18-35 3'3 161,162 Am/O Hunter 36+ 3'3 146,147 Am/O Hunter 18-35 3'6 151,152 Am/O Hunter 36+ 3'6 516 WIHS Hunter 166,167 Small Jr 15- 170 Small Jr 15- u/s 171,172 Small Jr 16-17 175 Small Jr 16-17 u/s 176,177 Large Jr 15- 180 Large Jr 15- u/s 181,182 Large Jr 16-17 185 Large Jr 16-17 u/s 186,187 Junior Hunter 15- 3'3 190 Junior Hunter 15- 3'3 u/s 191,192 Junior Hunter 16-17 3'3 195 Junior Hunter 3'3 16-17 u/s 231,232 Childrens Hunter 14- 235 Childrens Hunter 14- u/s	8:00 AM 160 Am/Owner 18-35 3'3 u/s 158,159 Am/Owner Hunter 18-35 3'3 165 Am/Owner 36+ 3'3 u/s 163,164 Am/O Hunter 36+ 3'3 58 \$1000 Am/Owner Classic 3'3 150 Am/Owner 18-35 3'6 u/s 148,149 Am/Owner 18-35 3'6 u/s 155 Am/Owner 36+ 3'6 u/s 153,154 Am/Owner 36+ 3'6 57 \$1000 Am/Owner Classic 3'6 168,169 Small Jr 15- 173,174 Small Jr 16-17 178,179 Large Jr 15- 183,184 Large Jr 16-17 55 \$1000 Junior Hunter Classic 3'6 188, 189 Junior Hunter 3'3 193,194 Junior Hunter 16-17 3'3 56 \$1000 Junior Hunter Classic 3'3 233,234 Childrens Hunter 14- 59 \$500 Childs 14-Classic

SUCCESS BEGINS IN YOUR BARN



GUARDIAN
HORSE BEDDING

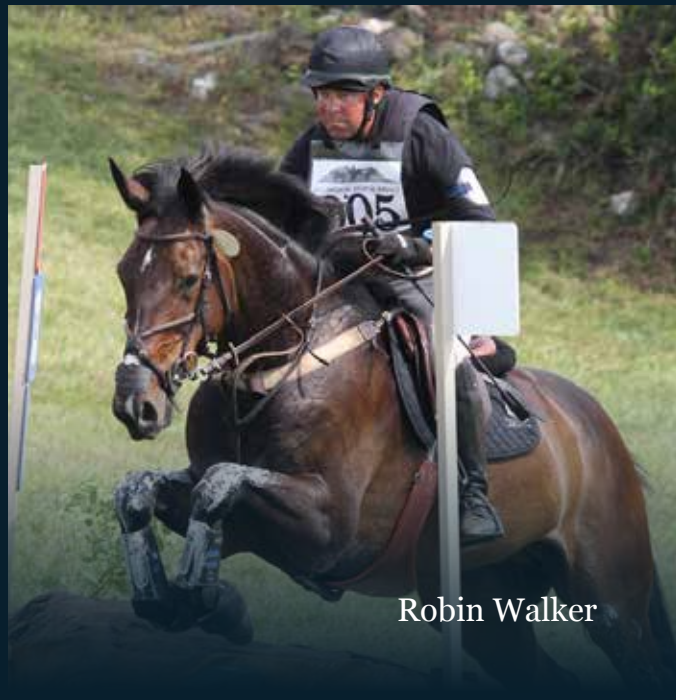
START WITH GUARDIAN HORSE BEDDING

Your Bedding Choice Directly Impacts
THE HEALTH OF YOUR HORSE.

Visit guardianhorsebedding.com or
call 866-962-4686 for more information



Boyd Martin



Robin Walker

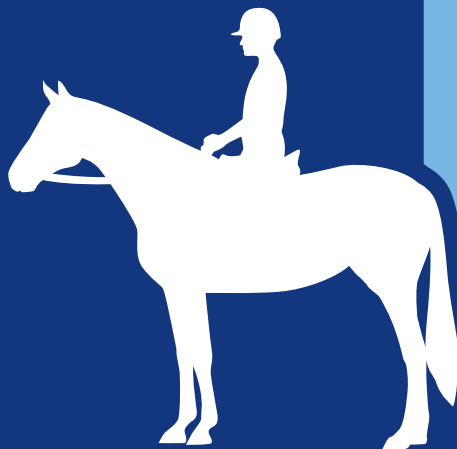


Lynn Symansky

2021 TRYON FALL 5 CSI 3* USEF PREMIER

updated 9/28/2021

TRYON STADIUM TUESDAY	TRYON STADIUM WEDNESDAY	TRYON STADIUM THURSDAY	TRYON STADIUM FRIDAY	TRYON STADIUM SATURDAY	TRYON STADIUM SUNDAY
CLOSED	8:00AM 821 1.40m Jumper II2b 10AM 1 \$6,000 Power/Speed 1.40m Stakes FEI art 274.1.5.2 1:00PM 2 \$37,000 Power/Speed 1.45m Stakes FEI art 274.1.5.2	8:00AM 602 Tryon DJS 5yr Finals Round 2 606 Tryon DJS 6yr Finals Round 2 610 Tryon DJS 7yr Finals Round 2 822 1.40m Jumper II1 12PM 3 \$37,000 Welcome Stakes 1.50m FEI art 238.2.2	8:00AM 823 1.40m Jumper Stakes II2b 815 1.30m Jumper Stakes II2b 819 1.35m Jumper Stakes II2b 1PM 4 \$6,000 1.45m Speed Stakes FEI art 238.2.1	8:00AM 603 Tryon DJS 5yr Finals Round 3 607 Tryon DJS 6yr Finals Round 3 611 Tryon DJS 7yr Finals Round 3 768 1.40m Jr/Am Jumper II21 764 1.30m Jr/Am Jumper II21 7PM 5 CSI 3* \$137,000 Grand Prix FEI art 238.2.2	8:00AM 769 1.40m Jr/Am Classic II2A/B 765 1.30m Jr/Am Classic II2B 761 1.20m Low Am Classic II2B 1PM 902 \$25,000 Sunday Classic (American Std) Table II2A
INTERNATIONAL	INTERNATIONAL	INTERNATIONAL	INTERNATIONAL	INTERNATIONAL	INTERNATIONAL
Back number warm-ups 9am - 4pm	8:00 AM 601 Tryon DJS 5yr Finals Round 1 821 Tryon DJS 6yr Finals Round 1 609 Tryon DJS 7yr Finals Round 1 817 1.35M Jumper II2b 809 1.20m Jumper II2b 813 1.30m Jumper II2b	8:00 AM 712 1.10m Jumper II2b 810 1.20m Jumper II21 814 1.30m Jumper II21 818 1.35m Jumper II21	8:00AM 27 \$25,000 USHJA International Hunter Derby 811 1.20m Jumper Stakes II2b 767 1.40m Jr/Am Jumper II2b 763 1.30m Jr/Am Jumper II2b	8:00AM 760 1.20m Am Jumper II21 756 1.20M Jr Jumper II21 735 1.10m Adult Jumper II2b 741 1.10m Child's Jumper II2b 747 1.15m Non Pro II2b	8:00AM 757 1.20m Low Jr Classic II2B 737 1.10m Adult Classic II2B 743 1.10m Child Classic II2B 748 1.15m Non Pro II21
RING 1 TUESDAY	CARTER BROWN RING 1 WEDNESDAY	CARTER BROWN RING 1 THURSDAY	CARTER BROWN RING 1 FRIDAY	CARTER BROWN RING 1 SATURDAY	CARTER BROWN RING 1 SUNDAY
			1:00PM 520 11-under Eq 2'3 521 11-under Eq Flat 485,486 Schooling Pony 2'9" 487,488 Schooling Pony 2'6" 489,490 Schooling Pony 2'	8:30 AM** 514 WIHS Pony *open card 283 Open Hunter 206,207 Large Pony 210 Large Pony u/s 201,202 Medium Pony 205 Medium Pony u/s 196,197 Small Pony 200 Small Pony u/s 211,212 Sm/Medium Green 215 Sm/Med Green u/s 216,217 Large Green Pony 220 Large Green Pony u/s 508 NCHJA Pony L-M-S 266,267 Childs Pony 270 Child Pony u/s 351,352,353 Walk Trot 357,358,359 Walk Trot Canter 341,342 Cross-rails 346,347 Adult Cross-rails	8:15 AM 354,355,356 Walk Trot 360,361,362 Walk Trot Canter 345 Cross-rails u/s 350 Ch/Adult Cross-rails u/s 343,344 Cross-rails 348,349 Adult Cross-rails 505 M/S USEF Pony *open through small pony 208,209 Large Pony 53 Large Pony Classic 203,204 Medium Pony 52 Med Pony Classic 198,199 Small Pony 51 Small Pony Classic 213,214 Sm/Medium Green 218,219 Large Green Pony 54 \$500 Green Pony Classic 268,269 Childs Pony Hunter 70 Child Pony Challenge
RING 2 TUESDAY	JARRET SCHMIDT RING 2 WEDNESDAY	JARRET SCHMIDT RING 2 THURSDAY	JARRET SCHMIDT RING 2 FRIDAY	JARRET SCHMIDT RING 2 SATURDAY	JARRET SCHMIDT RING 2 SUNDAY
Back number warm-ups 9am - 4:30pm	8:30 AM 281 Open Hunter BR* 248,249 USHJA Hunter 2' 250 USHJA Hunter 2' u/s 251,252 USHJA Hunter 2'3 253 USHJA Hunter 2'3 u/s 254,255 USHJA Hunter 2'6 301,302 Baby Green Hunter 256 USHJA Hunter 2'6 u/s 257,258 USHJA Hunter 2'9 259 USHJA Hunter 2'9 u/s 260,261 USHJA Hunter 3' 262 USHJA Hunter 3' u/s	8:30 AM 306,307 Foothills Hunter 2'6 303,304 Baby Green Hunter 308 Foothills 2'6 u/s 305 Baby Green u/s 309,310 Foothills Hunter 2'9 311 Foothills Hunter 2'9 u/s 312,313 Foothills Hunter 3' 314 Foothills Hunter 3' u/s 370,371 Take 2 Tbred Hunter 372 Take 2 u/s 121,122 Performance Hunter 3'3 125 Performance 3'3 u/s	8:30AM 123,124 Performance Hunter 3'3* 271,272 Young Hunter 3' 273 Young Hunter 3' u/s 274,275 Young Hunter 3'3 276 Young Hunter 3'3 u/s 277,278 Young Hunter 3'6 279 Young Hunter 3'6 u/s 483,484 Modified Adult 2'9 *BR 526,527 Adult Eq Flat 528 Adult Equitation 3' 502 ARIAT Adult Medal 501 THIS Children's Medal 522 12-14 Equitation 2'9 523 12-14 Eq Flat	8:00AM 510 Bryan Jones Medal 533 NHS THIS Adult Medal 3' 231,232 Adult Am 50+ 226,227 Adult Am 36-49 221,222 Adult Am 18-35 509 NCHJA Child Medal 503 SCHJA Governors Cup 529 Tryon Adult Medal 2'6 326,327 Pre-Adult Hunter 330 Pre-Adult Hunter u/s 530 Tryon Child Medal 2'6 321,322 Pre-Child Hunter 325 Pre-Child Hunter u/s 331,332 Short Stirrup 336,337 Long Stirrup 335 Short Stirrup u/s 340 Long Stirrup u/s 316,317 Foothills Ch/Adult 2' 320 Foothills Ch/Adult 2' u/s	8:00 AM 500 ASPCA Maclay 504 USEF PESSOA Medal 532 Hamel Foundation USHJA 3'3 Medal 225 Adult Am 18-35 u/s 223,224 Adult Am 18-35 61 \$500 Adult Am 18-35 Classic 230 Adult Am 36-49 u/s 228,229 Adult Am 36-49 235 Adult Am 50+ u/s 233,234 Adult Am 50+ 62 \$500 Adult Am 36+ Classic 328,329 Pre-Adult Hunter 71 Pre Adult Hunter Challenge 323,324 Pre-Child Hunter 72 Pre Child Hunter Challenge 333,334 Short Stirrup 73 S. Stirrup Hunter Challenge 338,339 Long Stirrup 74 L. Stirrup Hunter Challenge 318,319 Foothills Ch/Adult 2'
RING 3 TUESDAY	GORDON WRIGHT RING 3 WEDNESDAY	GORDON WRIGHT RING 3 THURSDAY	GORDON WRIGHT RING 3 FRIDAY	GORDON WRIGHT RING 3 SATURDAY	GORDON WRIGHT RING 3 SUNDAY
CLOSED	8:00 AM 711 1.10m Jumper II 714 1.15m Jumper II2b 700 .80m Jumper II 704 .90m Jumper II 708 1.0m Jumper II 717 Take 2 T-bred 1.0m II2b	8:00 AM 715 1.15m Jumper II2b 701 .80m Jumper II 705 .90m Jumper II 709 1.0m Jumper II 718 Take 2 T-bred 1.0m II2b	8:00 AM 713 1.10m Jumper II21 716 1.15m Jumper II21 702 .80m Jumper II21 706 .90m Jumper II2.1 710 1.0m Jumper II21 719 Take 2 T-bred 1.0m II21 734 1.10m Adult Jumper II2b 740 1.10m Child's Jumper II2b 746 1.15m Non Pro II2b	8:30 AM 515 WIHS Jumper 506 USEF Talent Search 2' 531 EMO USHJA Jumping Seat Medal 726 1.0m Adult Jumper II2b 730 1.0m Child's Jumper II2b 727 1.0m Adult Jumper II2c 731 1.0m Child's Jumper II2c 720 .90m Jumper non-pro II2b 721 .90m Jumper non-pro II21 703 .80m Jumper II 723 Pony Jumper II2b	8:00 AM 736 1.10m Adult Jumper II21 742 1.10m Child's Jumper II21 728 1.0M Adult Jumper II21 732 1.0M Child's Jumper II21 729 1.0 Adult Jumper Stakes 2b 733 1.0 Child's Jumper Stakes 2b 722 .90m Jumper non-pro II2b 724 Pony Jumper II2b 725 Pony Jumper II2b
RING 4 TUESDAY	REYNOLDS FAMILY RING 4 WEDNESDAY	REYNOLDS FAMILY RING 4 THURSDAY	REYNOLDS FAMILY RING 4 FRIDAY	REYNOLDS FAMILY RING 4 SATURDAY	REYNOLDS FAMILY RING 4 SUNDAY
Back number warm-ups 9am - 4pm	8:00 AM 98 High Perf Conf Model 104 Green Conf Model 282 Open Hunter *BR 126,127 Green Hunter 3'9 130 Green Hunter 3'9 u/s 131,132 Green Hunter 3'6 135 Green Hunter 3'6 u/s 105,106 Green Conf Hunter 3'6 109 Green Conf Hunter u/s 99,100 High Perf Conf Hunter 3'9 103 High Perf Conf Hunter u/s 111,112 High Perf. Hunter 115 High Perf. Hunter u/s 141,142 Green Hunter 3' 145 Green Hunter 3' u/s 136,137 Green Hunter 3'3 140 Green Hunter 3'3 u/s	8:00 AM 128,129 Green Hunter 3'9 133,134 Green Hunter 3'6 101,102 High Perf Conf. Hunter 3'9 113,114 High Perf. Hunter 107,108 Green Conf Hunter 3'6 31 3'6/3'9 Green Hunter Incentive 143,144 Green Hunter 3' 138,139 Green Hunter 3'3 30 3'3/3' Green Hunter Incentive 116,117 Performance Hunter 3'6 120 Performance 3'6 u/s	after USHJA Derby 118,119 Performance Hunter 3'6 481,482 Mod Am-O Hunter BR** 493,494 Modified Jr 3'3* BR** 525 15-17 Eq Flat 524 15-17 Equitation 3'6 507 EJ Haun 491,492 Modified Child 2'9 *BR	8:00 AM 156,157 Am/O Hunter 18-35 3'3 161,162 Am/O Hunter 36+ 3'3 146,147 Am/O Hunter 18-35 3'6 151,152 Am/O Hunter 36+ 3'6 516 WIHS Hunter 166,167 Small Jr 15- 170 Small Jr 15- u/s 171,172 Small Jr 16-17 175 Small Jr 16-17 u/s 176,177 Large Jr 15- 180 Large Jr 15- u/s 161,182 Large Jr 16-17 185 Large Jr 16-17 u/s 186,187 Junior Hunter 15- 3'3 190 Junior Hunter 15- 3'3 u/s 191,192 Junior Hunter 16-17 3'3 195 Junior Hunter 3'3 16-17 u/s 236,237 Childrens Hunter 14- 240 Childrens Hunter 14- u/s 241,242, Childrens Hunter 15-17 245 Childrens Hunter 15-17 u/s	8:00 AM 160 Am/Owner 18-35 3'3 u/s 158,159 Am/Owner Hunter 18-35 3'3 165 Am/Owner 36+ 3'3 u/s 163,164 Am/O Hunter 36+ 3'3 58 \$1000 Am/Owner Classic 3'3 150 Am/Owner 18-35 3'6 u/s 148,149 Am/Owner 18-35 3'6 155 Am/Owner 36+ 3'6 u/s 153,154 Am/Owner 36+ 3'6 57 \$1000 Am/Owner Classic 3'6 168,169 Small Jr 15- 173,174 Small Jr 16-17 178,179 Large Jr 15- 183,184 Large Jr 16-17 55 \$1000 Junior Hunter Classic 3'6 188, 189 Junior Hunter 3'3 193,194 Junior Hunter 16-17 3'3 56 \$1000 Junior Hunter Classic 3'3 238,239 Childrens Hunter 14- 59 \$500 Childs 14-Classical 243,244 Childrens Hunter 15-17 60 \$500 Childs 15-17 Classical
		8AM INTERNATIONAL DERBY CHECK IN** AT RING 4 W/UP			



MAAP

MINOR ATHLETE ABUSE PREVENTION

LEARN ABOUT MAAP POLICIES



SafeSport Training



One-On-One Interactions



Local Travel



Social Media and
Electronic Communications



Read about these and more at
usef.org/MAAPP

REPORT MAAP POLICY VIOLATIONS



usef.org/safe-sport/reporting
859-225-6915

TRYON FALL 7

updated
10/7/2021

RING 2 THURSDAY	JARRET SCHMID RING 2 FRIDAY	JARRET SCHMID RING 2 SATURDAY	JARRET SCHMID RING 2 SUNDAY
Back number warm-ups 9am - 4:30pm	8AM 248,249 USHJA Hunter 2' 250 USHJA Hunter 2' u/s 251,252 USHJA Hunter 2'3 253 USHJA Hunter 2'3 u/s 254,255 USHJA Hunter 2'6 301,302 Baby Green Hunter 256 USHJA Hunter 2'6 u/s 305 Baby Green u/s 257,258 USHJA Hunter 2'9 259 USHJA Hunter 2'9 u/s 502 Ariat Adult Medal 510 Bryan Jones Medal 528 Adult Eq Flat 526,527 Adult Equitation 3' 522 12-14 Equitation 2'9 523 12-14 Eq Flat 520 11-under Eq 521 11-under Eq Flat 485,486 School Pony 2'9" *BR 487,488 School Pony 2'6" *BR 489,490 School Pony 2' *BR	*AFTER HUNTER DERBY 303,304 Baby Green Hunter 514 WIHS Pony (s-m-l) open card 196,197 Pony Hunter 200 Pony Hunter u/s 211,212 Green Pony 215 Green u/s 508 NCHJA Pony Medal 266,267 Childs Pony 529 Tryon Adult Medal 2'6 326,327 Pre-Adult Hunter 330 Pre-Adult Hunter u/s 530 Tryon Child Medal 2'6 321,322 Pre-Child Hunter 325 Pre-Child Hunter u/s 331,332 Short Stirrup 335 Short Stirrup u/s 336,337 Long Stirrup 340 Long Stirrup u/s 316,317 Foothills Ch/Adult 2' 320 Foothills Ch/Adult 2' u/s 306,307 Foothills Hunter 2'6 308 Foothills 2'6 u/s 309,310 Foothills Hunter 2'9 311 Foothills Hunter 2'9 u/s 351,352,353 Opp Walk Trot 357,358,359 Opp Walk Trot Canter 341,342 Cross-rails 346,347 Adult Cross-rails	8:00AM 354,355,356 Opp Walk Trot 360,361,362 Opp Walk Trot Canter 343,344 Cross-rails 348,349 Ch/Adult Cross-rails 345 Cross-rails u/s 350 Ch/Adult Cross-rails u/s 505 M/Sterling USEF Pony (open card) 198 Pony Hunter 35 \$500 Pony Hunter Classic 213 Green Pony 36 \$500 Green Pony Classic 270 Child Pony u/s 268,269 Childs Pony Hunter 70 Child Pony Challenge 328,329 Pre-Adult Hunter 71 PreAdult Challenge 323,324 Pre-Child Hunter 72 Pre-Child Hunter Challenge 333,334 Short Stirrup 73 S. Stirrup Hunter Challenge 338,339 Long Stirrup 74 L. Stirrup Hunter Challenge 318,319 Foothills Ch/Adult 2'

RING 4 THURSDAY	REYNOLDS GRAND HUNTER RING 4 FRIDAY	REYNOLDS GRAND HUNTER RING 4 SATURDAY	REYNOLDS GRAND HUNTER RING 4 SUNDAY
Back number warm-ups 9am - 4:15pm	8:30 AM 280 Open Hunter *BR 131,132 Green Hunter 3'6 135 Green Hunter 3'6 u/s 126,127 Green Hunter 3'9 130 Green Hunter 3'9 U/S 111,112 High Perform. Hunter** 115 High Performance u/s 136,137 Green Hunter 3'3 140 Green Hunter 3'3 u/s 141,142 Green Hunter 3' 145 Green Hunter 3'u/s 116,117 Perf Hunter 3'6 121,122 Perf Hunter 3'3 277,278 Young Hunter 7/U 3'3 279 Young Hunter 7/U 3'3 U/S 274,275 Young Hunter 6/U 3' 276 Young Hunter 6/U 3' U/S 271 272 Young 5/U 2'9 273 Young Hunter 5/U 2'9 U/S 260,261 USHJA Hunter 3' 262 USHJA Hunter 3'u/s 370,371 Take 2 Tbred Hunter 372 Take 2 u/s 481,482 Modified Am 3'3 *BR 493,494 Modified Jr 3'3" *BR 483,484 Modified Adult 2'9" *BR 491,492 Modified Child 2'9" *BR	8:00 AM 26 USHJA \$2,500 USHJA HUNTER DERBY 128 Green Hunter 3'9 133 Green Hunter 3'6 138 Green Hunter 3'3 143 Green Hunter 3' 123 Performance 3'3: 125 Performance 3'3 u/s 118 Performance Hunter 3'6 120 Performance 3'6 u/s 113 High Perf. Hunter 525 15-17 Eq Flat 524 15-17 Equitation 3'6 507 EJ Haun 156,157 Am/O Hunter 3'3 146,147 Am/O Hunter 3'6 516 WIHS Hunter (open card) 166,167 Junior Hunter 3'6 186,187 Junior Hunter 3'3 532 Hamel Foundation NHS 3'3 533 NHS THIS Adult 221,222 Adult Am 509 NCHJA Child Medal 501 THIS Children's Medal 236,237 Childrens Hunter	8:30 AM 504 USEF Hunter Seat Medal 500 ASPCA Maclay 160 Am/Owner 3'3 u/s 158 Am/Owner Hunter 3'3 150 Am/Owner 3'6 u/s 148 Am/Owner 3'6 170 Junior Hunter 3'6 u/s 168 Junior Hunter 3'6" 190 Junior Hunter 3'3 u/s 188 Junior Hunter 3'3 225 Adult Am u/s 223,224 Adult Am 40 \$500 Adult Am Classic 503 SCHJA Governors Cup 240 Childrens Hunter u/s 238,239 Childrens Hunter 39 \$500 Ch Hunter Classic 312,313 Foothills Hunter 3' 314 Foothills Hunter 3' u/s

TRYON STADIUM THURSDAY	TRYON STADIUM FRIDAY	TRYON STADIUM SATURDAY	TRYON STADIUM SUNDAY
Back number warm-ups 9am - 4pm	8:00AM 770 DJS 5yr Old II 773 DJS 6yr Old II2b 776 DJS 7yr Old II2b 809 1.20m Jumper II2b 751 1.20m JrAm Jumper II2b 813 1.30m Jumper II2b 763 1.30m Jr/Am Jumper II2b 767 1.40m Jr/Am Jumper II2b 901 \$5000 Welcome Stakes 1.35M Table II 2 a/b 711 1.10m Jumper II2b 712 1.10m Jumper II2b 714 1.15m Jumper II2b 700 .80m Jumper II 701 .80m Jumper II 704 .90m Jumper II 705 .90m Jumper II 708 1.0m Jumper II 717 Take 2 T-bred 1.0m II2b 734 1.10 Ch/Adult Jumper II2b 746 1.15 Non Pro II2b	8:00AM 531 USHJA Jumping Medal 3'3 515 WIHS Jumper Phase 506 Platinum Performance USEF Talent Search 2* 771 DJS 5yr Old II 774 DJS 6yr Old II2b 777 DJS 7yr Old II2b 768 1.40m Jr/Am Jumper II21 814 1.30m Jumper II21 764 1.30m Jr/Am Jumper II21 810 1.20m Jumper II21 752 1.20m JrAm Jumper II21 713 1.10m Jumper II21 735 1.10 Ch/Adult Jumper II2b 715 1.15m Jumper II2b 747 1.15m Non Pro II2b 709 1.0m Jumper II 718 Take 2 T-bred 1.0m II2b 726 1.0M Ch/Adult Jumper II2b 727 1.0M Ch/Adult Jumper II2b 719 Take 2 T-bred 1.0m II2b 702 .80m Jumper II 703 .80m Jumper II2b 706 .90m Jumper II 720 .90m Jumper non-pro II2b 723 Pony Jumper II2b	8:00 AM 772 DJS 5yr Old II 775 DJS 6yr Old II2b 778 DJS 7yr Old II2b 811 1.20m Jumper Stakes II2b 753 1.20m Jr/Am Jumper Classic II2a-b 815 1.30m Jumper Stakes II2b 765 1.30m Jr/Am Classic II2a-b 769 1.40m Jr/Am Classic II2a-b APPROX 12PM 902 \$25,000 Grand Prix Grand Prix Table II 2 A (regional) 716 1.15m Jumper II21 748 1.15 Non Pro II21 736 1.10 Ch/Adult Jumper II21 737 1.10 Ch/Adult Jumper Classic II2b 728 1.0M Ch/Adult Jumper II21 729 1.0M Ch/Adult Jumper Stakes 2b 710 1.0m Jumper II 721 .90m Jumper non-pro II21 722 .90m Jumper non-pro II2b 724 Pony Jumper II2b 725 Pony Jumper II2b

TRYON
RESORT
To-Go!



SCAN CODE TO ORDER ONLINE



or visit [Tryon.com/ToGo](https://tryon.com/ToGo)

Or Call:

Roger's Diner: 828-863-1113

Campagna Italian Cuisine: 828-863-1127

Blue Ginger Sushi: 828-863-1121

TRYON FALL FINALE

RING 2 THURSDAY	JARRET SCHMID RING 2 FRIDAY	REYNOLDS FAMILY RING 2 SATURDAY	REYNOLDS FAMILY RING 2 SUNDAY
9AM Back number warm-ups 9am - 4:30pm	8AM 248,249 USHJA Hunter 2' 250 USHJA Hunter 2' u/s 251,252 USHJA Hunter 2'3 253 USHJA Hunter 2'3 u/s 254,255 USHJA Hunter 2'6 301,302 Baby Green Hunter 256 USHJA Hunter 2'6 u/s 305 Baby Green u/s 257,258 USHJA Hunter 2'9 259 USHJA Hunter 2'9 u/s 502 Ariat Adult Medal 510 Bryan Jones Medal 528 Adult Eq Flat 526,527 Adult Equitation 3' 522 12-14 Equitation 2'9 523 12-14 Eq Flat 520 11-under Eq 521 11-under Eq Flat 485,486 School Pony 2'9" *BR 487,488 School Pony 2'6 *BR 489,490 School Pony 2' *BR	*AFTER HUNTER DERBY 303,304 Baby Green Hunter 514 WIHS Pony (s-m-l) open card 196,197 Pony Hunter 200 Pony Hunter u/s 211,212 Green Pony 215 Green u/s 508 NCHJA Pony Medal 266,267 Childs Pony 529 Tryon Adult Medal 2'6 326,327 Pre-Adult Hunter 330 Pre-Adult Hunter u/s 530 Tryon Child Medal 2'6 321,322 Pre-Child Hunter 325 Pre-Child Hunter u/s 331,332 Short Stirrup 335 Short Stirrup u/s 336,337 Long Stirrup 340 Long Stirrup u/s 316,317 Foothills Ch/Adult 2' 320 Foothills Ch/Adult 2' u/s 306,307 Foothills Hunter 2'6 308 Foothills 2'6 u/s 309,310 Foothills Hunter 2'9 311 Foothills Hunter 2'9 u/s 351,352,353 Opp Walk Trot 357,358,359 Opp Walk Trot Canter 341,342 Cross-rails 346,347 Adult Cross-rails	8:00AM 354,355,356 Opp Walk Trot 360,361,362 Opp Walk Trot Canter 343,344 Cross-rails 348,349 Ch/Adult Cross-rails 345 Cross-rails u/s 350 Ch/Adult Cross-rails u/s 505 M/Sterling USEF Pony (open card) 198 Pony Hunter 35 \$500 Pony Hunter Classic 213 Green Pony 36 \$500 Green Pony Classic 270 Child Pony u/s 268,269 Childs Pony Hunter 70 Child Pony Challenge 328,329 Pre-Adult Hunter 71 PreAdult Challenge 323,324 Pre-Child Hunter 72 Pre-Child Hunter Challenge 333,334 Short Stirrup 73 S. Stirrup Hunter Challenge 338,339 Long Stirrup 74 L. Stirrup Hunter Challenge 318,319 Foothills Ch/Adult 2'
RING 3 THURSDAY	GORDAN WRIGHT RING 3 FRIDAY	GORDAN WRIGHT RING 3 SATURDAY	GORDAN WRIGHT RING 3 SUNDAY
Back number warm-ups 9am - 4:15pm	8:30 AM 280 Open Hunter *BR 131,132 Green Hunter 3'6 135 Green Hunter 3'6 u/s 126,127 Green Hunter 3'9 130 Green Hunter 3'9 U/S 111,112 High Perform. Hunter** 115 High Performance u/s 136,137 Green Hunter 3'3 140 Green Hunter 3'3 u/s 141,142 Green Hunter 3' 145 Green Hunter 3'u/s 116,117 Perf Hunter 3'6 121,122 Perf Hunter 3'3 277,278 Young Hunter 7/U 3'3 279 Young Hunter 7/U 3'3 U/S 274,275 Young Hunter 6/U 3' 276 Young Hunter 6/U 3' U/S 271 272 Young 5/U 2'9 273 Young Hunter 5/U 2'9 U/S 260,261 USHJA Hunter 3' 262 USHJA Hunter 3'u/s 370,371 Take 2 Tbred Hunter 372 Take 2 u/s 481,482 Modified Am 3'3 *BR 493,494 Modified Jr 3'3" *BR 483,484 Modified Adult 2'9" *BR 491,492 Modified Chld 2'9 *BR	8:00 AM 26 USHJA \$2,500 USHJA HUNTER DERBY 128 Green Hunter 3'9 133 Green Hunter 3'6 138 Green Hunter 3'3 143 Green Hunter 3' 123 Performance 3'3: 125 Performance 3'3 u/s 118 Performance Hunter 3'6 120 Performance 3'6 u/s 113 High Perf. Hunter 525 15-17 Eq Flat 524 15-17 Equitation 3'6 507 EJ Haun 156,157 Am/O Hunter 3'3 146,147 Am/O Hunter 3'6 516 WIHS Hunter (open card) 166,167 Junior Hunter 3'6 186,187 Junior Hunter 3'3 532 Hamel Foundation NHS 3'3 533 NHS THIS Adult 221,222 Adult Am 509 NCHJA Child Medal 501 THIS Children's Medal 236,237 Childrens Hunter	8:30 AM 504 USEF Hunter Seat Medal 500 ASPCA MacLay 160 Am/Owner 3'3 u/s 158 Am/Owner Hunter 3'3 150 Am/Owner 3'6 u/s 148 Am/Owner 3'6 170 Junior Hunter 3'6 u/s 168 Junior Hunter 3'6" 190 Junior Hunter 3'3 u/s 188 Junior Hunter 3'3 225 Adult Am u/s 223,224 Adult Am 40 \$500 Adult Am Classic 503 SCHJA Governors Cup 240 Childrens Hunter u/s 238,239 Childrens Hunter 39 \$500 Ch Hunter Classic 312,313 Foothills Hunter 3' 314 Foothills Hunter 3' u/s
RING 4 THURSDAY	REYNOLDS FAMILY RING 4 FRIDAY	REYNOLDS FAMILY RING 4 SATURDAY	REYNOLDS FAMILY RING 4 SUNDAY
Back number warm-ups 9am - 4pm	8:00AM 770 DJS 5yr Old II 773 DJS 6yr Old II2b 776 DJS 7yr Old II2b 809 1.20m Jumper II2b 751 1.20m JrAm Jumper II2b 813 1.30m Jumper II2b 763 1.30m Jr/Am Jumper II2b 767 1.40m Jr/Am Jumper II2b 901 \$5000 Welcome Stakes 1.35M Table II 2 a/b 711 1.10m Jumper II2b 712 1.10m Jumper II2b 714 1.15m Jumper II2b 700 .80m Jumper II 701 .80m Jumper II 704 .90m Jumper II 705 .90m Jumper II 708 1.0m Jumper II 717 Take 2 T-bred 1.0m II2b 734 1.10 Ch/Adult Jumper II2b 746 1.15 Non Pro II2b	8:00AM 531 USHJA Jumping Medal 3'3 515 WIHS Jumper Phase 506 Platinum Performance USEF Talent Search 2* 771 DJS 5yr Old II 774 DJS 6yr Old II2b 777 DJS 7yr Old II2b 768 1.40m Jr/Am Jumper II21 814 1.30m Jumper II21 764 1.30m Jr/Am Jumper II21 810 1.20m Jumper II21 752 1.20m JrAm Jumper II21 713 1.10m Jumper II21 735 1.10 Ch/Adult Jumper II2b 715 1.15m Jumper II2b 747 1.15m Non Pro II2b 709 1.0m Jumper II 718 Take 2 T-bred 1.0m II2b 726 1.0M Ch/Adult Jumper II2b 727 1.0M Ch/Adult Jumper II2b 719 Take 2 T-bred 1.0m II2b 702 .80m Jumper II 703 .80m Jumper II2b 706 .90m Jumper II 720 .90m Jumper non-pro II2b 723 Pony Jumper II2b	8:00 AM 772 DJS 5yr Old II 775 DJS 6yr Old II2b 778 DJS 7yr Old II2b 811 1.20m Jumper Stakes II2b 753 1.20m Jr/Am Jumper Classic II2a-b 815 1.30m Jumper Stakes II2b 765 1.30m Jr/Am Classic II2a-b 769 1.40m Jr/Am Classic II2a-b APPROX 12PM 902 \$25,000 Grand Prix Grand Prix Table II 2 A (regional) 716 1.15m Jumper II21 748 1.15 Non Pro II21 736 1.10 Ch/Adult Jumper II21 737 1.10 Ch/Adult Jumper Classic II2b 728 1.0M Ch/Adult Jumper II21 729 1.0M Ch/Adult Jumper Stakes 2b 710 1.0m Jumper II 721 .90m Jumper non-pro II21 722 .90m Jumper non-pro II2b 724 Pony Jumper II2b 725 Pony Jumper II2b



BIG ASS FANS

EXCEPTIONALLY ENGINEERED



BARN



UP TO
**25%
OFF**



BUSINESS



BEDROOM

Scan now and use code **EQUINE20** to **SAVE UP TO 25%** on the industry's best selling comfort solutions.



BIG ASS FANS

TRYON
HOMESIDE QUALITY HORSE CARE

EQUINE DISCOUNTS

**SCAN NOW
TO SAVE BIG**

877.BIG.FANS | bigassfans.com

USEF RATED B HUNTER SECTIONS - FALL 1, Fall 7, Fall Finale

All Hunter classes, Classics, and divisions to be held and judged in accordance with USEF and USHJA Zone 3 Rules and Regulations. Hunter sections with less than eight entries may be canceled or combined. Ribbons 1 - 8 unless otherwise noted. Division eligibility requirements are available at www.usef.org.

\$300 COCA-COLA HIGH PERFORMANCE HUNTER 4'

Entry Fee- \$130 Division or \$35 per class
111, 112, 113 - \$75 High Performance Hunter
115- \$75 High Performance Hunter Under Saddle

\$200 COCA-COLA PERFORMANCE HUNTER 3'6"

Entry fee- \$110 division or \$30 per class
116,117,118 - \$50 Performance Hunter 3'6"
120 \$50 Performance Hunter 3'6" Under Saddle

\$200 COCA-COLA PERFORMANCE HUNTER 3'3"

Entry fee- \$110 division or \$30 per class
121,122,123 - \$50 Performance Hunter 3'3"
125- \$50 Performance Hunter 3'3" Under Saddle

\$200 GREEN HUNTER 3'9"

Entry fee- \$110 division or \$30 per class
126, 127, 128 - \$50 Green Hunter 3'9"
130 - \$50 Green Hunter 3'9" Under Saddle

\$200 GREEN HUNTER 3'6"

Entry fee- \$110 division or \$30 per class
131,132,133 - \$50 Green Hunter 3'6"
135- \$50 Green Hunter 3'6" Under Saddle

\$200 GREEN HUNTER 3'3"

Entry fee- \$110 division or \$30 per class
136,137,138 - \$50 Green Hunter 3'3"
140- \$50 Green Hunter 3'3" Under Saddle

\$200 GREEN HUNTER 3'

Entry fee- \$110 division or \$30 per class
141,142,143 - \$50 Green Hunter 3'
145- \$50 Green Hunter 3' Under Saddle

\$200 AMATEUR-OWNER 3'6"

Entry fee- \$110 division or \$30 per class
146,147,148 - \$50 Am-Owner 3'6"
150 \$50 Am-Owner 3'6" Hunter Under Saddle

\$200 AMATEUR-OWNER 3'3" HUNTER

Entry fee- \$110 division or \$30 per class
156,157,158 - \$50 Am-Owner 3'3"
160- \$50 Am-Owner 3'3" Hunter Under Saddle

\$200 MAIN STREET INSURANCE JUNIOR HUNTER 3'6"

Entry fee- \$110 division or \$30 per class
166,167,168 - \$50 Junior Hunter 3'6"
170 \$50 Junior Hunter 3'6" Under Saddle

\$200 JUNIOR HUNTER 3'3"

Entry fee- \$110 division or \$30 per class
186,187,188 - \$50 Junior Hunter 3'3"
190- \$50 Junior Hunter 3'3" Under Saddle

\$200 PONY HUNTER

Entry fee- \$110 division or \$30 per class
196,197, 198 - \$50 Pony Hunter
200 \$50 Pony Hunter Under Saddle

\$200 GREEN PONY

Entry fee- \$110 division or \$30 per class
211, 212,213 - \$50 Green Pony
215 \$50 Green Pony Under Saddle

\$150 ADULT-AMATEUR HUNTER (RATED C/ZONE 3)

Entry fee- \$140 division or \$30 per class
221, 222, 223, 224 - \$30 Adult-Amateur Hunter
225 \$30 Adult-Amateur Hunter Under Saddle

\$150 CHILDREN'S HUNTER (RATED C/ZONE 3)

Entry fee- \$140 division or \$30 per class
236, 237, 238, 239 - \$30 Children's Hunter
240- \$30 Children's Hunter Under Saddle

\$150 CHILDREN'S PONY HUNTER 2'1/2'6" (RATED C/ZONE 3)

Entry Fee - \$140 division or \$30 per class
266, 267, 268, 269 - \$30 Children's Pony Hunter
270 - \$30 Children's Pony Hunter Under Saddle

SWIMMER

CHARLOTTE | FOREST CITY | TRYON



Equestrian Insurance Specialists since 1898

EQUINE AND EQUINE THERAPY INSURANCE PARTNERS


Farmowners
Equine Veterinarians
Farriers
Hunt Clubs

High Value Homes and Barns
Therapeutic Centers
Care Custody & Control
Equestrian Facilities

Horse Show/Event Liability
Commercial Equine Liability
Private Horse Owner Liability
Trainer/Instructor Liability

Chubb Insurance | Everett Cash Mutual | Great American Insurance
PURE Insurance | Philadelphia Insurance | Travelers Insurance | Westfield Insurance
Nationwide Insurance | Liberty Mutual

DERRICK OVERHOLT
doverholt@mainstreetins.com
828-817-4012 

STEPHEN BRADY
sbrady@mainstreetins.com
828-817-1039 

22 N Trade St. | Tryon, NC 28782 | 828-859-9252
123 E. Main St. | Forest City, NC 28043 | 828-245-6467
221 W. Eleventh St. | Charlotte, NC 28202 | 704-376-2436
725 Providence Rd, Ste 100 | Charlotte, NC 28207 | 704-333-6694
Toll Free 877-872-4578 | Fax 855-775-0655 | www.mainstreetins.com

OPPORTUNITY HUNTER SECTIONS - FALL 1, FALL 7, Fall Finale

For the Beginning Competitor. Exhibitors in Opportunity Classes may not cross enter into any USEF Rated classes. Riders who have ever participated in USEF rated divisions/ classes and/or zone pointed classes are ineligible for Opportunity Classes. Unless otherwise stated, Riders in Opportunity Classes may cross enter into any non-USEF divisions/classes with fences lower than 2'6"; no restrictions on horses/ponies. Riders/ horses/ponies showing ONLY in Opportunity Classes are exempt from USEF/USHJA membership requirements.

PLEASE NOTE: Cross-Rails and Walk-Trot-Canter classes will be offered Fall 2-5 but will not be Opportunity Classes. USEF and USHJA membership/registration/ microchip/Safe Sport, etc. rules will be in effect during those weeks.

OPPORTUNITY CROSS-RAILS 18" (NO OXERS)

Open to Junior riders 12 and under.

Riders may not cross enter into any rated divisions or divisions with fence heights higher than 2'. Entry Fee- \$130 per division or \$30 per class

341,342,343,344- Opportunity Cross-Rails 18"

345- Opportunity Cross-Rails Under Saddle

OPPORTUNITY CHILD/ADULT CROSS-RAILS 18" (NO OXERS)

Open to Amateur riders and junior riders 13 and up.

Riders may not cross enter into any rated divisions or divisions with fence heights higher than 2'.

Entry Fee- \$130 per division or \$30 per class

346,347,348,349- Opportunity Ch/Adult Cross-Rails 18"

350- Opportunity Ch/Adult Cross-Rails Under Saddle

OPPORTUNITY WALK-TROT-CANTER (SATURDAY)

Entry Fee - \$25 per class

357,358,359 Opportunity Hunter, Pleasure, Equitation

OPPORTUNITY WALK-TROT-CANTER (SUNDAY)

Entry Fee - \$25 per class

360,361,362 Opportunity Hunter, Pleasure, Equitation

BLUE & RED RIBBON CLASSES - ALL SHOWS

Scores from 77-100 will be awarded a blue ribbon; scores from 71-76 will be awarded a red ribbon. Entry Fee- \$40 per class Not all B/R classes offered all weeks. Check schedules.

280 - 288 Open Hunter BR (Open Card. Fence heights 2'-4' with classes as listed in schedules)

289-290 Cross-Rails Hunter-No oxers BR (Opportunity Fall 1, 7, Finale. Fence Heights 18")

481,482 - Modified Amateur 3'3" BR

483,484 - Modified Adult 2'9" BR

485,486 - Schooling Pony 2'9" BR

487,488 - Schooling Pony 2'6" BR

489,490 - Schooling Pony 2' BR

491,492 - Modified Child 2'9" BR

493,494 - Modified Junior 3'3" BR

ADDITIONAL HUNTER SECTIONS

ALL SHOWS

Classes with less than 6 entries may be canceled or combined. Ribbons 1 - 8 unless otherwise noted. USHJA Division eligibility requirements and class specifications are available at www.ushja.org.

2' USHJA HUNTER (C RATED)

Entry Fee \$100 division or \$45 per class
248,249- 2' USHJA Hunter
250- 2' USHJA Hunter Under Saddle

2'3 USHJA HUNTER (C RATED)

Entry Fee \$100 division or \$45 per class
251,252- 2'3 USHJA Hunter
253- 2'3 USHJA Hunter Under Saddle

2'6 USHJA HUNTER (C RATED)

Entry Fee \$100 division or \$45 per class
254,255- 2'6 USHJA Hunter
256- 2'6 USHJA Hunter Under Saddle

RIDE EVERY STRIDE 2'9 USHJA HUNTER (C RATED)

Entry Fee \$100 division or \$45 per class
257,258- 2'9 USHJA Hunter
259- 2'9 USHJA Hunter Under Saddle

3' USHJA HUNTER (C RATED)

Entry Fee \$100 division or \$45 per class
260,261- 3' USHJA Hunter
262- 3' USHJA Hunter Under Saddle

TAKE 2 THOROUGHBRED HUNTER 3' (C RATED)

See Specs at Take2fbreds.com
Entry Fee- \$100 division or \$45 per class
370,371- Take 2 Thoroughbred Hunter 3'
372- Take 2 Thoroughbred Hunter 3' Under Saddle

BABY GREEN HUNTERS 2'6"

Open to horses that have not shown over fences exceeding 3'
Entry Fee- \$185 division or \$45 per class
301,302,303,304 Baby Green Hunter 2'6"
305 Baby Green Hunter Under Saddle

FOOTHILLS HUNTER 2'6"

Entry Fee- \$100 division or \$45 per class
306,307- Foothills Hunter 2'6"
308- Foothills Hunter 2'6" Under Saddle

FOOTHILLS HUNTER 2'9"

Entry Fee- \$100 division or \$45 per class
309,310- Foothills Hunter 2'9"
311- Foothills Hunter 2'9" Under Saddle

FOOTHILLS HUNTER 3'

Entry Fee- \$100 division or \$45 per class
312,313- Foothills Hunter 3'
314- Foothills Hunter 3' Under Saddle

PRE-CHILDREN'S HUNTER 2'6"

Open to Junior riders. Rider may not cross enter into any class/section with fence heights higher than 2'9".
Entry Fee - \$130 division or \$30 per class
321,322,323,324-Pre-Child Hunter 2'6"
325 Pre-Child Hunter 2'6" Under Saddle

PRE-ADULT HUNTER 2'6"

Open to Amateur riders with USEF Amateur Certification. Rider may not cross enter into any class/section with fence heights higher than 2'9".
Entry Fee - \$130 division or \$30 per class
326,327,328,329- Pre-Adult Hunter 2'6"
330- Pre-Adult Hunter 2'6" Under Saddle

FOOTHILLS CHILD/ADULT-AMATEUR HUNTER 2'

Riders 18 & Over must have USEF Amateur Certification.
Entry Fee - \$130 division or \$30 per class
316,317,318,319 – Foothills Child/Adult-Am Hunter 2'
320 – Foothills Child/Adult-Am Hunter 2' U/S

SHORT STIRRUP HUNTER 2'

Open to all Junior riders 12 years of age and under who are not showing in any division above 2'.
Entry Fee - \$130 division or \$30 per class
331,332,333,334- Short Stirrup Hunter 2'
335- Short Stirrup Hunter 2' Under Saddle

LONG STIRRUP HUNTER 2'

Open to riders 13 years of age and over who are not showing in any division above 2'.
Entry Fee - \$130 division or \$30 per class
336,337,338,339 - Long Stirrup Hunter 2'
340 - Long Stirrup Hunter 2' Under Saddle

WALK-TROT

(USEF/USHJA Membership not required for Walk-Trot)
Riders not eligible for any classes other than WTC and Cross-Rails Entry Fee- \$25 per class
351,352,353 Hunter-Pleasure-Equitation (SATURDAY)
354,355,356 Hunter-Pleasure-Equitation (SUNDAY)

ADDITIONAL HUNTER SECTIONS

FALL 2, 3, 4, 5

CROSS-RAILS 18" (NO OXERS)

FALL 2, 3, 4, 5

Open to riders 12 and under. Riders may not cross enter into any rated divisions or divisions with fence heights higher than 2'.

Entry Fee- \$130 per division or \$30 per class

341,342,343,344- Cross-Rails 18"

345- Cross-Rails Under Saddle

CHILD/ADULT CROSS-RAILS 18" (NO OXERS)

FALL 2, 3, 4, 5

Open to Amateur riders who have Amateur Certification from USEF, and junior riders 13 and up.

Riders may not cross enter into any rated divisions or divisions with fence heights higher than 2'.

Entry Fee- \$130 per division or \$30 per class

346,347,348,349- Ch/Adult Cross-Rails 18"

350- Ch/Adult Cross-Rails Under Saddle

WALK-TROT-CANTER (SATURDAY/SUNDAY) -

FALL 2, 3, 4, 5

Entry Fee - \$25 per class

Saturday - 357,358,359 Hunter, Pleasure, Equitation

Sunday - 360,361,362 Hunter, Pleasure, Equitation

AMERICAN HOBBY HORSE

~Presents~

FALL COMPETITION SERIES



TRYON
RESORT

COMPETITION DATES: October 9, 16, 23, & 30
CHECK IN: 4:30pm **COMPETITION BEGINS:** at 5:00pm

REGISTER BY: 1:00pm day of competition

WWW.TRYON.COM/HOBBYHORSE

Need a Hobby Horse? Stop by The General Store.








MAKING LIFE BETTER SINCE 1985



BLANKETS | CLOTHING | ACCESSORIES | THERAPIES

www.horsewareireland.com |   

USHJA HUNTER DERBIES A ND SPECIAL HUNTER CLASSICS

USHJA Hunter Derbies and Green Incentive Classes will be run in accordance with current USHJA and USEF regulations and guidelines. Derby and Incentive details and class specifications are available at www.USHJA.org.

Prize Money for USHJA classes as follows: 30%-22%-13%-8%-6%-5%-4%-3%-3%-2%-2%-2%, 12 Ribbons

26 \$2,500 USHJA National Hunter Derby

(Fall 1, Fall 7, Fall Festival)

Entry Fee- \$250 (includes USHJA Fee \$25)

26 \$10,000 USHJA National Hunter Derby

(Fall 3)

Entry Fee- \$425 (includes USHJA Fee \$25)

27 \$20,000 USHJA International Hunter Derby

Horses must be enrolled in USHJA IHD Program.

(Fall 4)

Entry Fee- \$500 (Includes USHJA Fee \$50)

27 \$25,000 USHJA International Hunter Derby

Horses must be enrolled in USHJA IHD Program.

(Fall 5)

Entry Fee- \$525 (Includes USHJA Fee \$50)

30 \$1,000 3'3/3" Green Hunter Incentive

(Fall 1-5)

The third class of the division will be scored and count for Incentive Class.

Entry Fee- \$120 (includes USHJA Fee \$20)

31 \$1,000 3'6/3'9" Green Hunter Incentive

(Fall 1-5)

The third class of the division will be scored and count for Incentive Class.

Entry Fee- \$120 (includes USHJA Fee \$20)

CHALLENGE CLASSES To be eligible, must have competed in at least one class of the respective division. One round, to be scored numerically. Challenge classes with 6 entries or less may be combined or canceled. Ribbons 1-10. Entry Fee- \$40

70 Children's Hunter Pony Challenge

71 Pre-Adult Hunter Challenge

72 Pre-Children's Hunter Challenge

73 Short Stirrup Hunter Challenge

74 Long Stirrup Hunter Challenge



HUNTER CLASSICS

Hunter Classic Specifications

Horse/Rider combination must have shown in at least two over fences classes in the division. Top 12 come back for second round.

Classics with 8 entries or less may be combined or canceled. Ribbons 1-10. The second class of division will be scored and will count for the first round of classic. In order to be entered in the Classic, you must be entered in the Classic number below prior to the second class of your division.

Please check in the office if you have any questions.

Classics will be held each week unless otherwise stated.

FALL 1, Fall 7, Fall Festival:

35 \$500 Pony Hunter Classic Entry Fee- \$50

36 \$500 Green Pony Hunter Classic Entry Fee- \$50

39 \$500 NAL/WIHS Children's Hunter Classic 3' Entry Fee- \$50

40 \$500 NAL/WIHS Adult Hunter Classic 3' Entry Fee- \$50

FALL 2, 3, 4, 5:

51 \$500 Small Pony Hunter Classic Entry Fee- \$50

52 \$500 Medium Pony Hunter Classic Entry Fee- \$50

53 \$500 Large Pony Hunter Classic Entry Fee- \$50

54 \$500 Green Pony Hunter Classic Entry Fee- \$50

55 \$1,000 Junior Hunter Classic 3'6" Entry Fee- \$100

56 \$1,000 Junior Hunter Classic 3'3" Entry Fee- \$100

57 \$1,000 Amateur-Owner Hunter Classic 3'6" Entry Fee- \$100

58 \$1,000 Amateur-Owner Hunter Classic 3'3" Entry Fee- \$100

59 \$500 NAL/WIHS Children's 14 & Under Hunter Classic 3' Entry Fee- \$50

60 \$500 NAL/WIHS Children's 15-17 Hunter Classic 3' Entry Fee- \$50

61 \$500 NAL/WIHS Adult 18-35 Hunter Classic 3' Entry Fee- \$50

62 \$500 NAL/WIHS Adult 36 & Over Hunter Classic 3' Entry Fee- \$50



***All Natural.
Always***

www.sporthorseessentials.com

**CONTACT:
(561) 855-1936**

SPORTHORSEESSENTIALS@GMAIL.COM

EQUITATION DIVISION

All classes in this section will be conducted in accordance with USEF EQ-2. Ribbons awarded 1-8
Please make sure that all memberships are current and up-to-date prior to entering!

500 ASPCA MACLAY 3'6"

***NHS MEMBERSHIP REQUIRED FOR RIDER AND TRAINER**

Entry Fee \$50

501 TAYLOR HARRIS INSURANCE SERVICE NATIONAL CHILDREN'S MEDAL 3'

Entry Fee- \$50

502 ARIAT® ADULT MEDAL 3'

Entry Fee- \$50

503 SCHJA GOVERNOR'S CUP 3'

***SCHJA MEMBERSHIP REQUIRED**

Entry Fee- \$45

504 DOVER SADDLERY/USEF HUNTER SEAT MEDAL 3'6"

Entry Fee- \$55

505 MARSHALL & STERLING USEF PONY MEDAL

Entry Fee- \$55

506 PLATINUM PERFORMANCE/USEF TALENT SEARCH 2*

Entry Fee- \$55

507 EJ HAUN MEDAL (NOT SUMMER 3)

***NCHJA MEMBERSHIP REQUIRED**

Entry Fee- \$45

508 NCHJA PONY MEDAL (NOT SUMMER 3)

***NCHJA MEMBERSHIP REQUIRED**

Entry Fee- \$45

509 NCHJA CHILDREN'S MEDAL 3' (NOT SUMMER 3)

***NCHJA MEMBERSHIP REQUIRED**

Entry Fee- \$45

510 BRYAN JONES ADULT MEDAL 3' (NOT SUMMER 3)

***NCHJA MEMBERSHIP REQUIRED**

Entry Fee- \$45

514 WIHS PONY EQUITATION

Entry Fee- \$50

515 WIHS EQUITATION JUMPER PHASE 1.10M

Entry Fee- \$50

516 WIHS EQUITATION HUNTER PHASE 3'6"

Entry Fee- \$50

517 WIHS EQUITATION OVERALL

No Entry Fee

520 11& UNDER EQUITATION 2'3"

Entry Fee- \$35

521 11& UNDER EQUITATION FLAT

Entry Fee- \$35

522 12-14 EQUITATION 2'9"

Entry Fee- \$35

523 12-14 EQUITATION FLAT

Entry Fee- \$35

524 15-17 EQUITATION 3'6"

Entry Fee- \$35

525 15-17 EQUITATION FLAT

Entry Fee- \$35

526, 527 ADULT EQUITATION 3'

Entry Fee- \$35 per class

528 ADULT EQUITATION FLAT

Entry Fee- \$35

529 TRYON ADULT MEDAL 2'6"

Entry Fee- \$35

530 TRYON CHILDREN'S MEDAL 2'6"

Entry Fee- \$35

531 EMO INSURANCE USHJA 3'3" JUMPING SEAT MEDAL

www.ushja.org Entry Fee- \$50

532 HAMEL FOUNDATION NHS 3'3" MEDAL

***NHS MEMBERSHIP REQUIRED FOR RIDER AND TRAINER**

Entry Fee- \$55

533 NHS THIS ADULT MEDAL 3'

***NHS MEMBERSHIP REQUIRED FOR RIDER AND TRAINER**

Entry Fee- \$55



ALL EQUESTRIAN SURFACES

JTWG
INC.



©ESP



FOR ALL OF YOUR EQUESTRIAN SURFACES

Travis Gould

(815) 276-3777

JTWGinc@yahoo.com

@jtwg_equestrian_surfaces



FEI

For FEI class information, entry fee and class specifications see FEI section definite schedules at www.fei.org.
The FEI Definite Schedule supersedes any information regarding FEI classes/competitions that is printed in this prize list.

FEI COMPETITORS IMPORTANT INFORMATION

Exhibitors are responsible for having their Federations declare their horses for the FEI competition BEFORE the close of entries as listed in the FEI Definite Schedule each week. Definitive entries must be made to your Federation by the Thursday prior to the competition week unless otherwise stated in the Schedule. This Federation weekly declaration is the automatic nomination into the Jog. The Horse Show Office will determine the entries for each and every FEI week based solely off of the Definite Entries submitted on the FEI Entry System for that week. The athlete must manually withdraw any horse he/she does not plan to show before the jog to avoid paying the Late Withdrawal Fee as indicated in the FEI Schedule. Proper entries and withdrawals in the Jog are the sole responsibility of the athlete. We ask that you only declare the number of horses that are allowed each week. We will allow substitutions made by Federations up until 1 hour prior to the Jog/Horse Inspection.

Class Declarations must be done in the Horse Show Office each week on an official Add/Scratch sheet no later than 4:00pm the day before the class is held unless otherwise noted. Declarations made after that time may be accepted by Management only and, if accepted, will result in that horse going first in the order (draw) in the competition in question.

FEI STABLING: Please notify the Stabling Office each week BEFORE the Jog/Horse Inspection/stabling time to secure your stall location. FEI Entry Fee includes one stall. Additional FEI stalls, if available, are \$325.00 per additional stall per week. Stables will be open to receive horses per the FEI Definite Schedule. All horses being admitted to FEI Stabling must be accompanied by a current temperature slip and Passport. Any early arrivals must be approved by the Stabling Manager. All horses living in FEI stabling, whether showing or not, must obey all FEI Rules.

FEI JOG: Unless stated otherwise in the FEI Definite Schedule, the Jog/Horse Inspection will take place on Tuesdays at 12:30pm in the FEI area. Any changes to the FEI Jog/Horse Inspection will be posted in the FEI area and the Horse Show Office. Both horse and rider must be current FEI members in order to present at the Jog/Horse Inspection. Credentials are required for entrance to the FEI Compound at all times. Credentials are signed out by the FEI Office in the FEI Compound. Five passes will be issued per horse: Rider (1), Trainer of record signing the entry blank (1), Groom (1), and Owner of record as listed in the passport (2).

**FEI HORSES MAY NOT COMPETE IN NATIONAL COMPETITIONS AND
INTERNATIONAL COMPETITIONS DURING THE SAME EVENT.
(See FEI Jumping Rules, Annex VI for exceptions.)**



Please visit www.ryegate.com/uset.php Upcoming classes to determine which classes will be included in the Rolex Computer Ranking List.

FEI COMPETITIONS

TRYON FALL 3 CSI2* (Jog Wednesday 8am)

- 1 - \$10,000 Power/Speed 1.40m FEI Art. 274.1.5.3
- 2 - \$37,000 Horseware Ireland Welcome Stake 1.45m FEI Art. 238.2.2.3
- 3 - \$6,000 Speed Stake 1.45m FEI Art. 238.2.1
- 4 - \$73,000 CSI2* Grand Prix 1.45m FEI Art 238.2.2

TRYON FALL 4 CSI3* (Jog Tuesday)

- 1 - \$2,000 Power/Speed 1.40m FEI Art. 274.1.5.3
- 2 - \$37,000 Power/Speed 1.45m FEI Art. 274.1.5.3
- 3 - \$37,000 Horseware Ireland Welcome Stakes 1.50m FEI Art. 238.2.2.4
- 4 - \$6,000 Speed Stakes 1.45m FEI Art. 238.2.1
- 5 - \$137,000 CSI3* Grand Prix 1.50m FEI Art 238.2.2

TRYON FALL 5 CSI3* (Jog Tuesday)

- 1 - \$2,000 Power/Speed 1.40m FEI Art. 274.1.5.3
- 2 - \$37,000 Power/Speed 1.45m FEI Art. 274.1.5.3
- 3 - \$37,000 Horseware Ireland Welcome Stakes 1.50m FEI Art. 238.2.2.4
- 4 - \$6,000 Speed Stakes 1.45m FEI Art. 238.2.1
- 5 - \$137,000 CSI3* Grand Prix 1.50m FEI Art 238.2.2

This show offers one or more classes that are recognized by the
NORTH AMERICAN LEAGUE



For riders to receive credit, they must be a current member.

Membership is valid for the qualifying year and entitles the rider to earn points on one or more horses shown in accredited classes.

National Finals are held at the Capital Challenge horse show

West Coast Finals are held at the International Jumper Festival.

Please complete and mail the application with payment to:

North American League
1298 Royal Rd.
Annville, PA 17003
Phone: 717-867-5643; Fax: 717-867-2174

www.ryegate.com
nal@ryegate.com
Join Online at: www.ryegate.com

Please enroll me as a member of the North American League:

Date: _____ Amateur Junior Qualifying Year: _____
Membership is effective the date received in the league office with payment. (September 1, XXXX – August 31, XXXX)

Member Information

Name: _____
Address: _____
City: _____ State: _____ Zip Code: _____
Phone: _____ Fax: _____
Email: _____ DOB: _____
 Payment of \$40.00 enclosed USEF: _____

Cardholder Information

Please Charge My: Master Card Visa Discover AmEx

Name (As Shown On Card): _____
Address: _____
City: _____ State: _____ Zip Code: _____
Card Number: _____
Expiration Date: ____/____/____ CVV: _____
I authorize Ryegate Show Services on the behalf of the NAL to charge my card.
Signature: _____

**WASHINGTON INTERNATIONAL HOSE SHOW
CHILDREN'S & ADULT CHAMPIONSHIP AND WIHS EQUITATION**



Earn points here to qualify for the:

- \$10,000 Adult Jumper Final
- \$10,000 Adult Hunter Final
- \$10,000 Children's Jumper Final
- \$10,000 Children's Hunter Final
- WIHS Equitation Final WIHS Pony Equitation Final

Held at the Washington International Horse Show in Washington, DC

Competitors must submit a membership application for the current qualifying year to accrue points in all WIHS sanctioned classes. Membership entitles a rider to earn points on one or more horses in any of the divisions.

Please complete and mail the application with payment to:

WIHS
1298 Royal Rd.
Annville, PA 17003
Phone: 717-867-5643; Fax: 717-867-2174

www.ryegate.com
wih@ryegate.com
Join online at: WWW.RYEGATE.COM

Please enroll me as a member of the WIHS Championships & Equitation: Amateur Junior

Date: _____ Qualifying Year: _____
Membership is effective the date received in the league office with payment. (September 1, XXXX – August 31, XXXX)

Equitation Riders Only
 EAST WEST


Member Information

Name: _____
Address: _____
City: _____ State: _____ Zip Code: _____
Phone: _____ Fax: _____
Email: _____ DOB: _____
 Payment of \$40.00 enclosed USEF: _____

Cardholder Information

Please Charge My: Master Card Visa Discover AmEx

Name (As Shown On Card): _____
Address: _____
City: _____ State: _____ Zip Code: _____
Card Number: _____
Expiration Date: ____/____/____ CVV: _____
I authorize Ryegate Show Services on the behalf of the NAL to charge my card.
Signature: _____



Application for Membership
NORTH CAROLINA HUNTER JUMPER ASSOCIATION
4441 Six Forks Road, Suite 106-167 Raleigh, NC 27609
info@nchja.com Phone: 919-538-4781

Renewal _____ New Member _____

I hereby apply for membership for the year 20____ and enclose payment of \$ _____
Dues: Seniors \$40.00 Juniors \$30.00 Farm \$50.00 (Life) Life \$350.00

Name: _____
Address: _____ City, State, Zip _____
Telephone: _____


Senior: _____ If a Senior, please check one: Professional _____ Amateur _____
If Amateur please indicate age group: ____ 18-35 ____ 36-49 ____ 50+

Junior: _____ If a Junior, MUST have BIRTHDATE _____

Email: _____

If joining at a horse show please list show name and date: _____

Memberships and member numbers are now posted on the Members page at www.nchja.com.
The NCHJA Rule Book is available to view online.



4441 Six Forks Road, Suite 106-167 Raleigh, NC 27609

HORSE RECORDING FORM
FEE: \$30.00 For Life

Circle One: (Horse) (Pony) Name _____

Foaled _____ Sex _____ Color _____ Height _____ Breed _____

Markings (if any) _____

Sire _____

Dam _____

USEF Pony Measurement Number _____

Owner's Name _____ Phone _____

Address _____ City/State/Zip _____



SOUTH CAROLINA HUNTER AND JUMPER ASSOCIATION

Date of Application: _____ Membership Year: _____

APPLICATION FOR MEMBERSHIP

\$25.00 JUNIOR MEMBERSHIP \$30.00 SENIOR MEMBERSHIP
 \$40.00 FARM MEMBERSHIP \$260.00 LIFE MEMBERSHIP
(Includes one Senior Membership) (Farm Lifetime has NO Senior Membership Included)

Name: _____
 Farm Name: (for Farm Membership) _____
 Address: _____
 City: _____ State: _____ Zip Code: _____
 Phone: _____ E-Mail: _____
 Date of Birth: (Juniors only) _____

PLEASE REMEMBER!! WHEN FILLING OUT ENTRIES AT SANCTIONED SHOWS, YOU MUST USE THE EXACT HORSE, OWNER AND RIDER NAMES REGISTERED WITH SCHJA FOR POINTS TO COUNT.

APPLICATION FOR HORSE/PONY REGISTRATION


\$25.00 Lifetime Registration \$15.00 Name Change
 \$20.00 Transfer of Ownership \$15.00 Lease
(Horse MUST already be a SCHJA Lifetime Member for Lease)

Horse/Pony Name: _____
 Size: _____ Breed: _____ Color: _____ Age: _____
 Owner/Lessee: _____
(owner/lessee must be a member of the SCHJA - must be listed at horse shows under this name)
 (if registering a name change, please include original name as well as new name)

Previous Owner (For Lease or Transfer): _____

Return with your check to:
South Carolina Hunter and Jumper Association

Please include Registered Name(s) and Horse(s) in Memo if possible.



GEORGIA HUNTER JUMPER ASSOCIATION, INC.
 202 South Main Street, Ste 200 ■ Alpharetta, GA 30009 ■ execsec@ghja.org
 Visit our website for news, point standings, sponsor links and other resources: www.ghja.org

2021 Membership Application
 Renewal New

Date: _____ I am enclosing \$ _____ check # _____

GHJA Membership #: _____ USEF Membership #: (if available) _____

Name: _____ Please print name in the exact manner in which it will be used to sign in at all horse shows.

Address: _____ Date of Birth (Juniors only): / /

City: _____ State: _____ Zip: _____

Home Phone: _____ Cell Phone: _____

E-mail Address: _____

Parent/Guardian email address: _____

Trainers: Please include my name, barn name, address and work phone in the online Trainers Directory.
 Barn Name: _____

Annual membership dues:
 Family **\$70** 2 Junior & 1 Senior & 1 Junior member Other Family Member: _____
 Senior **\$55** members who are 18 years of age or older as of December 1, 2020
 Junior **\$45** members who have not reached 18th birthday as of December 1, 2020
 Life **\$400**
 Sustaining **\$30** for non-competing members. You will not be eligible for the awards program

Applicant Signature: _____ Date: _____
Applicant hereby agrees to be bound by the Bylaws and Rules of the GHJA now in effect or as subsequently adapted.

Application for Horse Recording

New Recording \$35 lifetime recording of horse
 Name Change \$15 to change the registered name on a horse with an existing GHJA membership
 Owner Change \$15 to transfer permanent ownership from one GHJA member to another GHJA member
 Lease Change \$15 to transfer temporary ownership from one GHJA member to another GHJA member

Date: _____ I am enclosing \$ _____ check # _____

GHJA Recording #: _____ USEF Recording #: (if available) _____

Horse Name: _____ Sex: Mare Gelding Stallion
 Breed: _____ Color: _____ Height: _____

Markings: _____


Owner Name and GHJA #: _____
Owner must be a current GHJA member - if you are leasing a horse and showing under the owner's name, they must be a member as well

Address: _____ Phone: () _____

City: _____ State: _____ Zip: _____

Previous Name/Owner (if applicable): _____

Where horses are to be recorded and/or shown under a stable or farm name, same should be noted
There will be a \$25 NSF charge for all checks that are returned from the bank.



Virginia Horse Shows Association, Inc.
 ~MEMBERSHIP APPLICATION~

(DO NOT WRITE IN THIS SPACE)

INDIVIDUAL MEMBERSHIP (Please print neatly): Renewal New Membership

Name: _____
 Address: _____
 City: _____ State: _____ Zip Code: _____
 County: _____ E-Mail Address: _____
 Telephone: () _____ (HOME) Date of Birth: _____
 () _____ (CELL) My Breed Interest: _____

MEMBERSHIP FEES - PLEASE CHECK ONE:

Senior Membership \$60.00
 Junior Membership* \$50.00
 Life Membership \$400.00

FEES CAN BE PAID ONLINE (www.vhsa.com - click on PAY DUES), BY CHECK OR BY COMPLETING THIS FORM WITH CREDIT CARD INFORMATION AND E-MAIL TO THE VHSA OFFICE (vhsa@verizon.net)

*A Junior is anyone under the age of 18 as of Dec. 1st of current show year
 (Horse and Owner must be registered with the VHSA to accrue points for Year-End Awards Program)

Membership is active the date that the VHSA receives your application and payment in the VHSA office or the show date of the VHSA recognized horse show you turned this paperwork into.

(DO NOT WRITE IN THIS SPACE)

FARM/STABLE/CORPORATION MEMBERSHIP:

Farm/Stable/Corporate Name: _____
 Owner: _____ VHSA No.: _____
 Address: _____
 City: _____ County: _____
 State: _____ Zip Code: _____
 Telephone: () _____ (HOME) Date of Incorporation: _____
 () _____ (CELL) E-Mail Address: _____

I hereby certify that the above information is correct and that I am the owner or agent for the aforementioned Farm/Stable/Corporation.

DATE: _____ SIGNATURE: _____

MEMBERSHIP FEES - PLEASE CHECK ONE:


Annual Membership Fee \$60.00
 Lifetime Membership Fee \$400.00

FEES CAN BE PAID ONLINE (www.vhsa.com - click on PAY DUES), BY CHECK OR BY COMPLETING THIS FORM WITH CREDIT CARD INFORMATION AND E-MAIL TO THE VHSA OFFICE (vhsa@verizon.net)

Name (As it appears on Card): _____ Expiration Date: _____
 Credit Card Number: _____ CVV Code: _____
 Address of Card Holder (If different than above): _____
 Phone Number: _____ E-mail: _____
 With this signature, I give permission to the VHSA to charge my credit card for the above fees:

NOTE: ANNUAL MEMBERSHIPS EXPIRE NOVEMBER 30TH

400 Rosedale Court, Suite 100 Website: www.vhsa.com (540) 349-0910
 Warrenton, Virginia 20186 E-mail: vhsa@verizon.net FAX (540) 349-0094



Virginia Horse Shows Association, Inc.
 HORSE RECORDING APPLICATION

(DO NOT WRITE IN THIS SPACE)

(Please print neatly)
 NAME OF HORSE: _____
 COLOR: _____ HEIGHT: _____ SEX(circle one): MARE FILLY GELDING STALLION COLT
 FOALING DATE: _____ DAM: _____
 SIRE: _____ DAM'S SIRE: _____
 BREEDER'S NAME: _____
 MARKINGS: _____

PLEASE PRINT ALL INFORMATION

OWNER'S NAME: _____ LESSEE'S NAME: _____
 ADDRESS: _____ ADDRESS: _____

DAY/CELL TELEPHONE NO.: () _____ DAY/CELL TELEPHONE NO.: () _____
 OWNER'S VHSA # _____ LESSEE'S VHSA # _____
 E-MAIL ADDRESS: _____ E-MAIL ADDRESS: _____

(Note: Owner or Lessee must be a VHSA member for points to count - VHSA considers Lessee to be the owner for the duration of the lease)
 Horses must be entered at shows exactly as recorded with the VHSA

I certify that the information listed above is true and that I am the Owner/Agent of record.
 SIGNATURE OF OWNER/LESSEE: _____ DATE: _____

HORSE RECORDING FEES:

Lifetime Recording Fee \$60.00 _____
 Change of Ownership Fee \$40.00 _____ (In order for VHSA to process Change of Owner, Bill of Sale MUST be included)
 Record Lease Fee \$30.00 _____ (In order for VHSA to process Lease, Lease Agreement MUST be included. Also, in order to process Lease the horse must have been previously recorded with the VHSA by the Owner)
 Change of Name Fee \$30.00 _____ (In order for VHSA to process, the Old Name must be included in space below)
 For a Name Change, please indicate old name here: _____

FEES CAN BE PAID ONLINE (www.vhsa.com - click on PAY DUES), BY CHECK OR BY COMPLETING THIS FORM WITH CREDIT CARD INFORMATION AND E-MAIL TO THE VHSA OFFICE (vhsa@verizon.net)

Name (As it appears on Card): _____ Expiration Date: _____
 Credit Card Number: _____ CVV Code: _____
 Address of Card Holder (If different than above): _____
 Phone Number: _____ E-mail: _____
 With this signature, I give permission to the VHSA to charge my credit card for the above fees:

This Horse Recording is active the date that the VHSA receives your application, copy of Lease Agreement (if applicable) or Bill of Sale (if applicable) and payment in the VHSA office or the show date of the VHSA recognized horse show you turned this paperwork into. Horse registrations will not be processed in the VHSA office until all required documentation is received.

In order for a horse to be able to accrue points for year-end awards, the owner/lessee of the horse must be a current VHSA member

400 Rosedale Court, Suite 100 Website: www.vhsa.com (540) 349-0910
 Warrenton, Virginia 20186 E-mail: vhsa@verizon.net FAX (540) 349-0094



Ride Every Stride Inc.
*Individuality
at its finest.*

*Your leading provider
of custom equestrian
products & corporate
branded merchandise.*

- Stable Accessories
- Custom Horse Blankets
- Engraved Products
- VIP Event Material
- Branding & Marketing
- Custom Apparel
- Promotional Products
- Horse Show Prizes

rideeverystride.com

JUMPER SECTIONS

JUMPER SECTIONS

FOR FEI CLASS INFORMATION AND CLASS SPECIFICATIONS, SEE FEI SECTION AND DRAFT/DEFINITE SCHEDULES AT WWW.FEI.ORG.

JUMPER SPECIFICATIONS FOR USE AND OTHER NON-FEI JUMPER CLASSES AND CLASSICS:

NOMINATING FEE: Nominating Fee for all horses showing in jumper classes held at 1.20m or above, except FEI or otherwise noted. For FEI entries please refer to FEI section and Definite Schedule.
Nomination Fee: \$185-Fall 1, 7, FINALE
\$225-Fall 2, 3, 4, 5

DECLARATIONS: Declarations must be made on the appropriate form in the Horse Show Office or online by 4:00 pm the day before the class is to be held unless otherwise noted. Entries made after the deadline will be placed first in the order of go and will be subject to a late charge in addition to the entry fee. "Day off" adds to classes may not be permitted in some cases or classes.

CLASS TIES: All ties involving first place shall be jumped off. Ties for placings other than first place will be decided by time.

ATTIRE: Coats are required for all classes in the Stadium unless waived by management.

CLASSES: Classes or Classics with fewer than eight entries may be combined or canceled. Classes with fewer than three entries may be canceled or run as "Training" classes with no prize money.

AWARDS: Ribbons 1-8 unless otherwise noted.

CHAMPION AND RESERVE: A minimum of three in each class of a Section to award Section championships if offered. Children's, Adult, and Junior/Amateur sections will be calculated using results from section classes and the Classic. All ties will be broken by results of the Classic (when applicable) or by the final class of the section.

0.70 m = Fences 2'3" in height
0.75 m = Fences 2'5" in height
0.80 m = Fences 2'7" in height
0.85 m = Fences 2'9" in height
0.90 m = Fences 2'11" in height
0.95 m = Fences 3'1" in height
1.00 m = Fences 3'3" in height
1.05 m = Fences 3'5" in height
1.10 m = Fences 3'7" in height
1.15 m = Fences 3'9" in height
1.20 m = Fences 3'11" in height
1.25 m = Fences 4'1" in height
1.30 m = Fences 4'3" in height
1.35 m = Fences 4'5" in height
1.40 m = Fences 4'7" in height
1.45 m = Fences 4'9" in height
1.50 m = Fences 4'11" in height
1.55 m = Fences 5'1" in height
1.60 m = Fences 5'3" in height

JUMPER SECTIONS (NON-RATED)

All shows unless otherwise specified.
Entry Fee: \$45 per class unless otherwise noted.
See Schedule for class tables.

.80m Jumper
No division championship
700, 701, 702, 703 .80m Jumper

.90m Jumper
No division championship
704, 705, 706, .90m Jumper

.90m Jumper Non Pro
720, 721, 722 .90 Non Pro Jumper

1.0m Jumper
No division championship
708, 709, 710 1.0m Jumper

Sport Horse Essentials 1.10m Jumper
711, 712, 713 Jumper 1.10m

RevitaVet 1.15m Jumper
714, 715, 716, 1.15m Jumper 1.15m

\$240 1.15m Jumper Non-Pro 1.15m
Entry Fee: \$50 per class
746,747,748 \$80 1.15m Jumper Non-Pro 1.15m

TRYON

INTERNATIONAL EQUESTRIAN CENTER & RESORT

*For all who
love horses*



Tryon.com | @TryonResort



JUMPER SECTIONS

RECOGNIZED JUMPER SECTIONS

PONY JUMPER (ALL SHOWS)

Entry Fee: \$45 per class - Ribbons 1-8 723, 724, 725
Pony Jumper 1.05m - II.2.B

CHILDREN'S/ADULT JUMPER FALL 2, 3, 4, 5

\$2240 SANTA CRUZ ANIMAL HEALTH HIGH ADULT AMATEUR JUMPER 1.10M (FALL 2, 3, 4, 5)

(No nomination fee) See USHJA Zone 3 specifications.
Classic will count towards show championship and will
be used to break any ties Entry Fee: \$50 per class
734,735,736 - Ribbons 1-8
734,735 \$80 Adult Amateur Jumper Table II.2.B
736 \$80 Adult Amateur Jumper Table II.2.1
737 \$2,000 Adult Jumper Classic NAL/WIHS 1.10m -
II.2.B

Open to horse/rider combinations entered in the High or
Low Adult Jumper section at this show.
Horses can do only one Classic, High or Low.
(No nominating fee) Entry Fee: \$150 Ribbons 1-10

\$2240 PROELITE HIGH CHILDREN'S JUMPER 1.10M (FALL 2, 3, 4, 5)

(No nomination fee) See USHJA Zone 3 specifications.
Classic will count towards show championship and will
be used to break any ties Entry Fee: \$50 per class
740,741,742 - Ribbons 1-8 740,741 \$80 Children's Jumper
Table II.2.B
742 \$80 Children's Jumper Table II.2.1
743 \$2,000 Children's Jumper Classic NAL/WIHS 1.10m
- II.2.B

Open to horse/rider combinations entered in the High or
Low Children's Jumper section at this show.
Horses can do only one Classic, High or Low.
(No nominating fee) Entry Fee: \$150 Ribbons 1-10

JUNIOR/AMATEUR JUMPER

- If there are less than 6 in the first class of any
Junior/Amateur section(s) they will be combined and will
use the entry fee and prize
money of the section with the higher prize money/height.
In the event that sections are combined, both heights will
be offered.

- To be eligible to show in a Classic, the horse must be
entered in another class in the Junior/Amateur Jumper
Section. Any horse that has been shown in a 1.40m
Jr/Am class is ineligible for the 1.20m Junior or 1.20m
Amateur Classic at the same show.

-Horses may be shown in only one Classic.

- The Classic will count toward Section Championship
and will be used to break any ties.

\$4,000 ST. LUKE'S HOSPITAL 1.20M JUNIOR JUMPER (FALL 2, 3, 4, 5)

Entry Fee: \$50 per class - Ribbons 1 - 8
755 \$500 Low Junior Jumper 1.20m Table II.2.B
756 \$500 Low Junior Jumper 1.20m Table II.2.1
757 \$3000 NAL Low Junior Jumper Classic 1.20M Entry
Fee: \$200 - Table II2B - Ribbons 1 - 10

\$4,000 ST. LUKE'S HOSPITAL 1.20M AMATEUR JUMPER (FALL 2, 3, 4, 5)

Entry Fee: \$50 per class - Ribbons 1 - 8
759 \$500 Low Amateur Jumper 1.20m Table II.2.B
760 \$500 Low Amateur Jumper 1.20m Table II.2.1
761 \$3000 NAL Low Amateur Jumper Classic 1.20M
Entry Fee: \$200 - Table II2B - Ribbons 1 - 10

\$6,000 1.30M JUNIOR/AMATEUR JUMPER (FALL 2, 3, 4, 5)

Entry Fee: \$50 per class Ribbons 1 - 8
763 \$500 Medium Junior/Amateur Jumper 1.30m Table
II.2.B
764 \$500 Medium Junior/Amateur Jumper 1.30m Table
II.2.1
765 \$5000 Med Junior/Amateur Jumper Classic 1.30M
Entry Fee: \$275 - Table II2B - Ribbons 1 - 10

\$11,500 ESI FOOTING HIGH JUNIOR/AMATEUR JUMPER 1.40M (FALL 2, 3, 4, 5)

Entry Fee: \$60 per class Ribbons 1 - 8
767 \$750 High Junior/Amateur Jumper 1.40m Table
II.2.B
768 \$750 High Junior/Amateur Jumper 1.40m Table
II.2.1
769 \$10,000 High Junior/Amateur Jumper Classic 1.40M
Entry Fee: \$325 - Table II2A/B - Ribbons 1 - 10

KEN FEAGIN TRUCK & TRAILER LOW ADULT-AMATEUR JUMPER & LOW CHILDREN'S JUMPERS 1.0M

(FALL 2, 3, 4, 5)

(No nomination fee) See USHJA Zone 3 specifications.
Classic will count towards show championship and will
be used to break any ties. Horses can do only one
Classic, High or Low. Classics are open to horse/rider
combinations entered in High or Low Adult-Amateur or
Children's Jumper Section at this show. Entry Fee: \$45
per class except Classic \$50; Ribbons 1-8

726,727 Low Adult Amateur Jumper 1.0m - II.2B
728 Low Adult Amateur Jumper 1.0m - II.2.1

JUMPER SECTIONS

729 \$300 Low Adult Amateur Jumper Classic 1.0m - II.2B
730,731 Low Children's Jumper 1.0m - II.2B
732 Low Children's Jumper 1.0m - II.2.1
733 \$300 Low Children's Jumper Classic 1.0m - II.2B

OPEN JUMPER SECTION-FALL 2, 3, 4, 5

\$3,000 1.20M OPEN JUMPER

Entry Fee:\$50 per class
809,810; Ribbons 1 - 8
809 \$500 1.20m Open Jumper Table II 2 B
810 \$500 1.20m Open Jumper Table II 2 1
811 \$2,000 1.20m Open Jumper Stake Table II 2 B
Stake Entry Fee: \$150; Ribbons 1-8

\$3,500 JTWG 1.30M OPEN JUMPER

Entry Fee:\$60 per class
813,814; Ribbons 1 - 8
813 \$750 1.30m Open Jumper Table II 2 B
814 \$750 1.30m Open Jumper Table II 2 1
815 \$2,000 1.30m Open Jumper Stakes Table II 2 B
Stake Entry Fee: \$150; Ribbons 1-8

\$5,000 1.35M OPEN JUMPER

Entry Fee:\$70 per class 817, 818; Ribbons 1 - 8
817 \$1,000 1.35m Open Jumper Table II 2 B
818 \$1,000 1.35m Open Jumper Table II 2 1
819 \$3,000 1.35m Open Jumper Stakes Table II 2 B
Stake Entry Fee: \$200; Ribbons 1-8

\$7,000 NUTRENA 1.40M OPEN JUMPER

Entry Fee:\$70 per class
821, 822; Ribbons 1 - 8
821 \$1,000 1.40m Open Jumper Table II 2 B
822 \$1,000 1.40m Open Jumper Table II 2 1
823 \$5,000 1.40m Open Jumper Stakes Table II 2 B
Stake Entry Fee: \$275; Ribbons 1-8

TRYON DEVELOPING JUMPER SERIES

5, 6, & 7 YEAR-OLDS (ALL SHOWS)

Open to horses recorded with USEF and Age Verified in accordance with USEF Policies and Procedures. See JP 116.1. Declarations to compete must be made no later than 4:00 pm the day before the class is to be held. Any class with 3 or fewer entries as of 4:00 pm of the day prior to the class may be canceled at management's discretion. Draw reins and standing martingales are not permitted. All Developing Jumper classes will be held in accordance with JP116. Hind Boots: See JP 116.2a

No Nomination Fees - Free Entry Fee: \$0 per class - Ribbons 1 - 8

770,771 DJS 5 Yr/Old Jumper 1.10m-1.15m Table II
772 DJS 5 DJS 5 Yr/Old Jumper 1.10m-1.15m Table II
(After July 1, 5 Year Old Fences - 1.20m)

773,774 DJS 6 Yr/Old Jumper 1.20m-1.25m Table II2b
775 \$500 DJS 6 Yr/Old Jumper 1.20m-1.25m Table II2b
(After July 1, 6 Year Old Fences - 1.30m)

776,777 DJS 7 Yr/Old Jumper 1.30-1.35m Table II2b
778 \$500 DJS 7 Yr/Old Jumper 1.30-1.35m Table II2b

TAKE 2 THOROUGHBRED JUMPER 1.0M (ALL SHOWS)

Open to Thoroughbreds only that have either their Jockey Club certificate of registration, a lip tattoo, or a letter from the Jockey Club verifying the horse's identity. Proof of registration must be presented at the time of entry.

Entry Fee: \$45 per class; Ribbons 1-8
See JP121. Fences 1.0m
717 Take2 Thoroughbred Jumper Table II.2.B
718 Take2 Thoroughbred Jumper Table II.2.B
719 Take2 Thoroughbred Jumper Table II.2.1

CHILDREN'S/ADULT JUMPER - FALL 1, 7, FINALE

LOW CHILDREN'S/ADULT-AMATEUR JUMPER 1.0M - FALL 1, 7, FINALE SPONSORED BY KEN FEAGIN TRUCK & TRAILER

(No nomination fee) See USHJA Zone 3 specifications Stakes class will count towards show championship and will be used to break any ties.

Entry Fee: \$45 per class 727,727,728 - Ribbons 1-8
726,727 Low Children's/Adult Amateur Jumper 1.0m - II.2B

728 Low Children's/Adult Amateur Jumper 1.0m - II.2.1
729 \$300 Low Children's/Adult Amateur Jumper Stakes 1.0m - II.2B Open to horse/rider combination entered in Low Adult-Amateur Jumper division at this show.

Stakes Entry Fee: \$50 Ribbons 1-8

\$2240 CHILDREN'S/ADULT AMATEUR JUMPER 1.10M - FALL 1, 7, FINALE SPONSORED BY PROELITE & SANTA CRUZ ANIMAL HEALTH

(No nomination fee) See USHJA Zone 3 specifications. Classic will count towards show championship and will be used to break any ties

Entry Fee: \$50 per class 734,735,736 - Ribbons 1-8
734, 735 \$80 Children's/Adult Amateur Jumper Table II.2.B

JUMPER SECTIONS

736 \$80 Children's/Adult Amateur Jumper Table II.2.1
737 \$2,000 NAL/WIHS Children's/Adult Jumper Classic
1.10m - II.2.B
Open to horse/rider combinations entered in the High or
Low Adult Jumper
division at this show. Entry Fee: \$150 Ribbons 1-10

JUNIOR/AMATEUR JUMPER - FALL 1, 7, FINALE

\$2,800 1.20M ST. LUKE'S HOSPITAL 1.20M JUNIOR/AMATEUR JUMPER - FALL 1, 7, FINALE

Entry Fee: \$45 per class 751,752 - Ribbons 1 - 8
751 \$400 Low Junior/Amateur Jumper 1.20m Table
II.2.B
752 \$400 Low Junior/Amateur Jumper 1.20m Table II.2.1
753 \$2,000 NAL Low Junior/Amateur Jumper Classic
1.20M
Horses that have been shown in 1.40m Jr/Am Jumpers
at the same show are ineligible for 1.20m Classic.
Entry Fee: \$135 - Table II2A/B - Ribbons 1 - 10

\$2,800 1.30M JUNIOR/AMATEUR JUMPER - FALL 1, 7, FINALE

Entry Fee: \$45 per class 763,764 - Ribbons 1 - 8
763 \$400 Medium Junior/Amateur Jumper 1.30m Table
II.2.B
764 \$400 Medium Junior/Amateur Jumper 1.30m Table
II.2.1
765 \$2,000 Medium Junior/Amateur Jumper Classic
1.30M
Entry Fee: \$135 - Table II2A/B - Ribbons 1 - 10

\$2,800 1.40M ESI FOOTING HIGH JUNIOR/AMATEUR JUMPER - FALL 1, 7 FINALE

Entry Fee: \$45 per class 767,768 - Ribbons 1 - 8
767 \$400 High Junior/Amateur Jumper 1.40m Table
II.2.B
768 \$400 High Junior/Amateur Jumper 1.40m Table
II.2.1
769 \$2,000 High Junior/Amateur Jumper Classic 1.40M
Entry Fee: \$135 - Table II2A/B - Ribbons 1 - 10
OPEN JUMPER SECTION - Summer 1,2

\$2,800 1.20M OPEN JUMPER FALL 1, 7, FINALE

Entry Fee: \$45 per class 809,810; Ribbons 1 - 8
809 \$400 1.20m Open Jumper Table II 2 B
810 \$400 1.20m Open Jumper Table II 2 1
811 \$2,000 1.20m Open Jumper Table II 2 B
Entry Fee: \$150 - Table II2A/B - Ribbons 1 - 10

\$2,800 JTWG 1.30M OPEN JUMPER FALL 1, 7, FINALE

Entry Fee: \$45 per class 813,814; Ribbons 1 - 8 813
\$400 1.30m Open Jumper Table II 2 B
814 \$400 1.30m Open Jumper Table II 2 1
815 \$2,000 1.30m Open Jumper Table II 2 B
Entry Fee: \$150 - Table II2A/B - Ribbons 1 - 10

GRAND PRIX/SPECIAL JUMPER CLASSES

TRYON FALL 1, 7, FINALE

901 - \$5,000 Horsecare Ireland Welcome Stake 1.35M,
II2B
Entry Fee: \$250
902 - \$25,000 Jumper Classic II2a (Regional Standard)
Entry Fee: \$450
24-HOUR RULE IN EFFECT-ALL HORSES MUST
HAVE A STALL

TRYON FALL 2

901 - \$5,000 Horsecare Ireland Welcome Stake
1.35M, II2B Entry Fee: \$250
902 - \$25,000 Jumper Classic II2a (Regional Standard)
Entry Fee: \$450
24-HOUR RULE IN EFFECT-ALL HORSES MUST
HAVE A STALL

GRAND PRIX/SPECIAL JUMPER CLASSES FALL 3, 4, 5

902 - \$25,000 Jumper Classic II2a (American Standard)
Entry Fee: \$450
24-HOUR RULE IN EFFECT-ALL HORSES MUST
HAVE A STALL

TRYON
INTERNATIONAL EQUESTRIAN CENTER

**at
HOME!**



Free access to top equestrian sport at
[Tryon.com/Streaming](https://www.tryon.com/streaming)



[Tryon.com/Compete](https://www.tryon.com/compete) | 828.863.1000 | [f](#) [@](#) [▶](#) [t](#) [d](#) | 25 International Blvd, Mill Spring, NC 28756
Stall requests and onsite lodging reservations available. All dates subject to USEF approval.

Entry #	MAILED ENTRIES BE POSTMARKED BY CLOSING DATES TO AVOID LATE FEES Fall 7 Fall Festival	CLOSING DATES Fall 7/Fall Festival-November 1	
CIRCLE SHOWS YOU PLAN ON ATTENDING:			
MAIL ENTRIES TO: Horse Show Office, Tryon International Equestrian Center, 25 International Blvd, Mill Spring NC 28756		MAKE CHECKS PAYABLE TO: Tryon Horse Shows LLC	
HORSE SHOW ENTRY OFFICE: 828-863-1011 HAY/BEDDING: 828-863-1009 STALL RESERVATIONS: www.Tryon.com.			
or complete CC Autho information below:			
NAME OF HORSE	BREED	COLOR	SEX
HORSE PASSPORT #	SIRE	DAM	AGE
USEF/USHJA #	DOB	HEIGHT	DAM'S SIRE
NATIONALITY	USEF/USHJA #	DOB	SECTION(S) CLASSES ENTERED/FEI
			Please do on add slip
			Please do on add slip

Federation Entry Agreement
By entering a Federation-licensed Competition and signing this entry blank as the Owner, Lessee, Trainer, Manager, Agent, Coach, Driver, Rider, Handler, Vaultor or Longeur and on behalf of myself and my principals, representatives, employees and agents, I agree that I am subject to the Bylaws and Rules of the United States Equestrian Federation, Inc. (the "Federation") and the local rules of Tryon Horse Shows(Competition). I agree to be bound by the Bylaws and Rules of the Federation and of the competition. I will accept as final the decision of the Hearing Committee on any question arising under the Rules, and agree to release and hold harmless the competition, the Federation, their officials, directors and employees for any action taken under the Rules. I represent that I am eligible to enter and/or participate under the Rules, and every horse I am entering is eligible as entered. I also agree that as a condition of and in consideration of acceptance of entry, the Federation and/or the Competition may use or assign photographs, videos, audios, cable - casts, broadcasts, internet, film, new media or other likenesses of me and my horse taken during the course of the competition for the promotion, coverage or benefit of the competition, sport, or the Federation. Those likenesses shall not be used to advertise a product and they may not be used in such a way as to jeopardize amateur status. I hereby expressly and irrevocably waive and release any rights in connection with such use, including any claim to compensation, invasion of privacy, right of publicity, or to misappropriation. The construction and application of Federation rules are governed by the laws of the State of New York, and any action instituted against the Federation must be filed in New York State. See GR908.4.

BY SIGNING BELOW, I AGREE that I have read, understand, and agree to be bound by all applicable Federation Bylaws, rules, and policies including the USEF Safe Sport Policy and Minor Athlete Abuse Prevention Policies (MAAPP) as published at www.usef.org, as amended from time to time, as well as all terms and provisions of this Prize List. If I am signing and submitting this Agreement electronically, I acknowledge that my electronic signature shall have the same validity, force and effect as if I affixed my signature by my own hand.

Owner/Agent	Trainer	Rider #1 (parent/guardian signature if minor)
Signature _____	Signature _____	Signature _____
Print Name _____	Print Name _____	Print Name _____
Address _____	Address _____	Address _____
City/State/Zip _____	City/State/Zip _____	City/State/Zip _____
Phone _____	Phone _____	Phone _____
USEF # _____	USEF # _____	USEF # _____
Email Address: _____	Email Address: _____	Email Address: _____
		Prize Money Payee Address
		Stable With: _____

Rider #2 (parent/guardian signature if minor)	Rider #1 (parent/guardian signature if minor)	Rider #2 (parent/guardian signature if minor)
Signature _____	Signature _____	Signature _____
Print Name _____	Print Name _____	Print Name _____
Address _____	Address _____	Address _____
City/State/Zip _____	City/State/Zip _____	City/State/Zip _____
Phone _____	Phone _____	Phone _____
USEF # _____	USEF # _____	USEF # _____
Email Address: _____	Email Address: _____	Email Address: _____

TAXPAYER INFORMATION IS REQUIRED IN ORDER FOR PRIZE MONEY TO BE APPLIED/PAID

Taxpayer Name (must coincide with SS# or EIN#) _____

Social Security # or Federal ID # _____

Stallist: Fall 7/Festival @ \$200	Order Online
Grounds Fee (if no stall) @ \$50	
Jumpster Nom-Fall 7/Festival - \$185	
USEF Show Pass @ \$45/USHJA Show Pass @ \$30	
USEF Fee (\$15 Drug & Medication/SS USEF)	\$23
USHJA Fee @ \$7	\$7
Office Fee @ \$60	\$60
Late Fee @ \$50	
Non-Showing Fee @ \$50	
Equine Nighttime Security	\$20
Ambulance Fee	\$15
TOTAL	

In Case of Emergency during the show contact name, phone #



WAIVER AND RELEASE OF LIABILITY, ASSUMPTION OF RISK AND INDEMNITY AGREEMENT

For and in consideration of United States Equestrian Federation, Inc. dba US Equestrian ("USEF") allowing me, the undersigned, to participate in any capacity (including as a rider, driver, handler, vaulter, longeur, lessee, owner, agent, coach, official, trainer or volunteer) in a USEF sanctioned, licensed or approved event or activity, including but not limited to equestrian clinics, practices, shows, competitions and related or incidental activities and ("USEF Event" or "USEF Events"); I, for myself, and on behalf of my spouse, children, heirs and next of kin, and any legal and personal representatives, executors, administrators, successors, and assigns, hereby agree to and make the following contractual representations pursuant to this Agreement (the "Agreement"):

A. RULES AND REGULATIONS: I hereby agree that I have read, understand, and agree to be bound by all applicable Federation Bylaws, rules, and policies including the USEF Safe Sport Policy and Minor Athlete Abuse Prevention Policies (MAAPP) as published at www.usef.org, as amended from time to time.

B. ACKNOWLEDGMENT OF RISK: I knowingly, willingly, and voluntarily acknowledge the inherent risks associated with the sport of equestrian and know that horseback riding and related equestrian activities are inherently dangerous, and that participation in any USEF Event involves risks and dangers including, without limitation, the potential for serious bodily injury (including broken bones, head or neck injuries), sickness and disease (including communicable diseases), trauma, pain & suffering, permanent disability, paralysis and death; loss of or damage to personal property (including my mount & equipment) arising out of the unpredictable behavior of horses; exposure to extreme conditions and circumstances; accidents involving other participants, event staff, volunteers or spectators; contact or collision with other participants and horses, natural or manmade objects; adverse weather conditions; facilities issues and premises conditions; failure of protective equipment (including helmets); inadequate safety measures; participants of varying skill levels; situations beyond the immediate control of the USEF Event organizers and competition management; and other undefined, not readily foreseeable and presently unknown risks and dangers ("Risks").

EQUINE ACTIVITY LIABILITY ACT WARNING:

CAUTION: HORSEBACK RIDING AND EQUINE ACTIVITIES CAN BE DANGEROUS. RIDE AT YOUR OWN RISK.

Under the laws of most States, an equine activity sponsor or equine professional is not liable for any injury to, or the death of, a participant in equine activities resulting from the inherent risks of equine activities.

C. ASSUMPTION OF RISK: I understand that the aforementioned Risks may be caused in whole or in part or result directly or indirectly from the negligence of my own actions or inactions, the actions or inactions of others participating in the USEF Events, or the negligent acts or omissions of the Released Parties defined below, and I hereby voluntarily and knowingly assume all such Risks and responsibility for any damages, liabilities, losses, or expenses that I incur as a result of my participation in any USEF Events. I also agree to be responsible for any injury or damage caused by me, my horse, my employees or contractors under my direction and control at any USEF Event.

D. WAIVER AND RELEASE OF LIABILITY, HOLD HARMLESS AND INDEMNITY: In conjunction with my participation in any USEF Event, I hereby release, waive and covenant not to sue, and further agree to indemnify, defend and hold harmless the following parties: USEF, USEF Recognized Affiliate Associations, the United States Olympic & Paralympic Committee (USOPC), USEF clubs, members, Event participants (including athletes/riders, coaches, trainers, judges/officials, and other personnel), the Event owner, licensee, and competition managers; the promoters, sponsors, or advertisers of any USEF Event; any charity or other beneficiary which may benefit from the USEF Event; the owners, managers, or lessors of any facilities or premises where a USEF Event may be held; and all directors, officers, employees, agents, contractors, and volunteers of any of the aforementioned parties (**Individually and Collectively, the "Released Parties" or "Event Organizers"**), with respect to any liability, claim(s), demand(s), cause(s) of action, damage(s), loss, or expense (including court costs and reasonable attorney fees) of any kind or nature ("**Liability**") which may arise out of, result from, or relate in any way to my participation in the USEF Events, including claims for Liability caused in whole or in part by the negligent acts or omissions of the Released Parties.

E. COMPLETE AGREEMENT AND SEVERABILITY CLAUSE: This Agreement represents the complete understanding between the parties regarding these issues and no oral representations, statements or inducements have been made apart from this Agreement. If any provision of this Agreement is held to be unlawful, void, or for any reason unenforceable, then that provision shall be deemed severable from this Agreement and shall not affect the validity and enforceability of any remaining provisions.

I HAVE CAREFULLY READ THIS DOCUMENT IN ITS ENTIRETY, UNDERSTAND ALL OF ITS TERMS AND CONDITIONS, AND KNOW IT CONTAINS AN ASSUMPTION OF RISK, RELEASE AND WAIVER FROM LIABILITY, AS WELL AS A HOLD HARMLESS AND INDEMNIFICATION OBLIGATIONS.

By signing below, I (as the participant or as the Parent/Legal Guardian of the minor identified below) hereby accept and agree to the terms and conditions of this Agreement in connection with my (or the minor's) participation in any USEF Event. If, despite this Agreement, I, or anyone on my behalf or the minor's behalf, makes a claim for Liability against any of the Released Parties, I will indemnify, defend and hold harmless each of the Released Parties from any such Liabilities as the result of such claim.

The parties agree that this agreement may be electronically signed. The parties agree that the electronic signatures appearing on this agreement are the same as handwritten signatures for the purposes of validity, enforceability, and admissibility.

RIDER/DRIVER/HANDLER/VAULTER/LONGEUR OWNER TRAINER OFFICIAL STAFF VOLUNTEER COACH (IF APPLICABLE)

Signature: _____ Date: _____

Print Name: _____

Parent/Guardian Signature: (Required if Rider/Driver/Handler/Vaulter/Longeur is a minor) _____ Date: _____

Print Parent//Guardian Name: _____ Emergency Contact Phone No. _____

6.17.20



Cleghorn™
GOLF & SPORTS CLUB

at

TRYON
RESORT

The Ultimate Equestrian Lifestyle Destination
18-Hole Golf Course, Pool, Tennis & Basketball Courts & Restaurant
CleghornGolf.com | 828-286-9117

TOGETHER
TASTES BETTER™

Coca-Cola®

TRYON
INTERNATIONAL EQUESTRIAN CENTER

